



# BUMPERSIGN *FLEXPOST*

**FLEX SMARTER. INSTALL FASTER.  
BUILT TO BOUNCE BACK.**



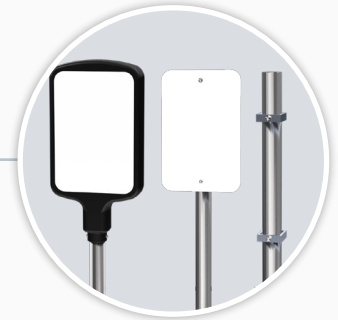
#### ENGINEERED MATERIALS

Polymers, spring steel, elastomers – all combined to put in the work when you need it and look darn good when you don't.



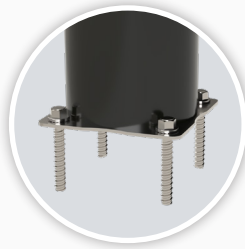
#### FINISHING TOUCHES

Variety of sign topper options completes the modern design.



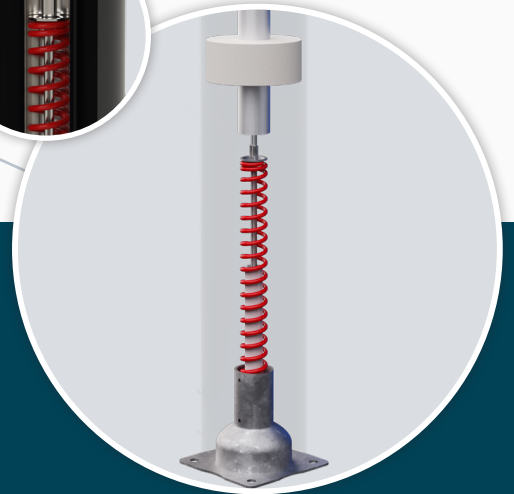
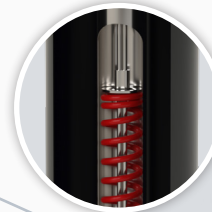
#### MOUNTING OPTIONS

Engineered mounting options for asphalt and concrete ground types.



#### INNERSPRING TECHNOLOGY

The spring-loaded interior absorbs impact energy and returns back to original position every time.



# BUMPERSIGN FLEXPOST

Meet **BumperSign FlexPost**, the sign you won't have to replace! Its innerspring technology allows it to deflect and dissipate impact energy. And it always returns upright —saving you from crooked signs and costly repairs. The customer experience begins and ends in the parking lot, so make sure you get it right, with **BumperSign FlexPost**!

## .....HOW IT WORKS: **BUMPERSIGN FLEXPOST**.....

Bump. Bend. Bounce Back.



Vehicle impacts BumperSign FlexPost.

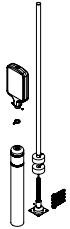


High-resilience internal spring flexes in impact.



Sign returns to original upright position.

## BUMPERSIGN *FLEXPOST*

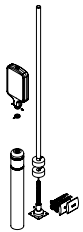


### BUMPERSIGN FLEXPOST CONCRETE INSTALLATION

TOPPER INCLUDED

**PART NUMBER: BSFP-K-108T-C-###**

**What's Included:** Polymer Cover,  
Sign Pole, Sign Topper & Hardware Kit



### BUMPERSIGN FLEXPOST ASPHALT INSTALLATION

TOPPER INCLUDED

**PART NUMBER: BSFP-K-108T-A-###**

**What's Included:** Polymer Cover,  
Sign Pole, Sign Topper & Hardware Kit

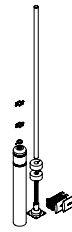


### BUMPERSIGN FLEXPOST CONCRETE INSTALLATION

SIGNPOST ONLY

**PART NUMBER: BSFP-K-108-C-###**

**What's Included:** Polymer Cover,  
Sign Pole & Hardware Kit



### BUMPERSIGN FLEXPOST ASPHALT INSTALLATION

SIGNPOST ONLY

**PART NUMBER: BSFP-K-108-A-###**

**What's Included:** Polymer Cover,  
Sign Pole & Hardware Kit

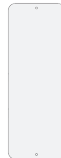
## PLACARDS & TOPPERS



### STANDARD PLACARD

12in (304mm) x 18in (457mm)

Custom standard placards  
available, call for details.



### LARGE PLACARD

Custom size placards  
available, call for details.



### 2-SIDED SIGN TOPPER

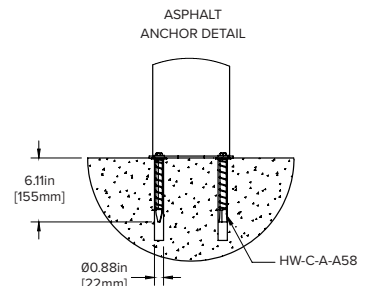
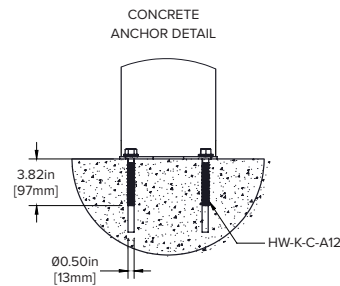
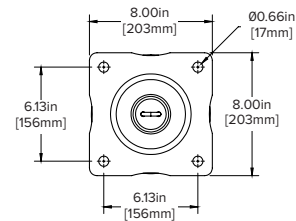
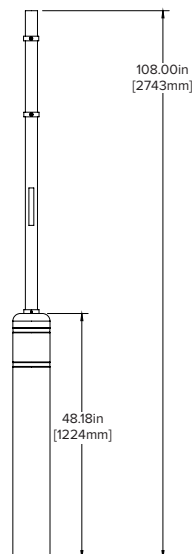
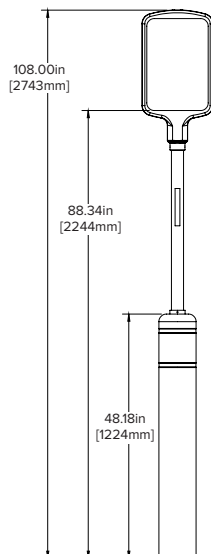
Designed to fit standard  
12x18 Placard.

**PRODUCT NUMBER:**  
**15AB060-###**

## TECHNICAL *SPECS*

**CONCRETE: BSFP-K-108T-C-###**  
**ASPHALT: BSFP-K-108T-A-###**

**CONCRETE: BSFP-K-108-C-###**  
**ASPHALT: BSFP-K-108-A-###**



**LEAD TIME:** 3 week lead time

**STANDARD COLORS:**

401  
Black

709  
ADA Blue