

FILL OUT THE PART NUMBER WITH THE APPROPRIATE VALUES ACCORDING TO THE BEAM BEING COVERED

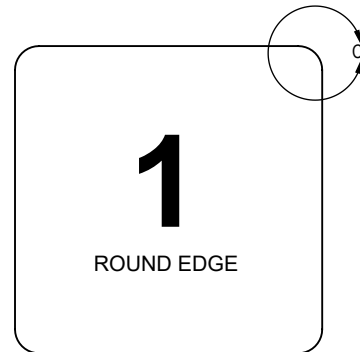
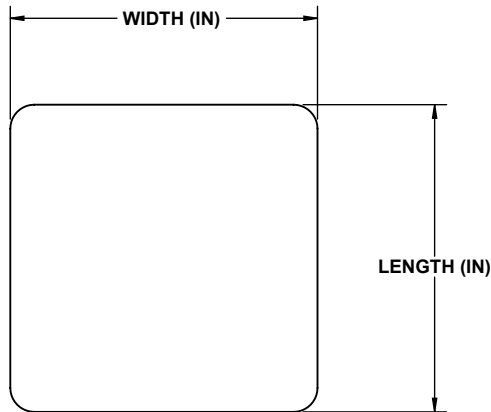
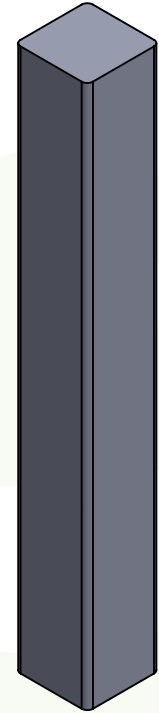
STORE # : \_\_\_\_\_

QUANTITY : \_\_\_\_\_

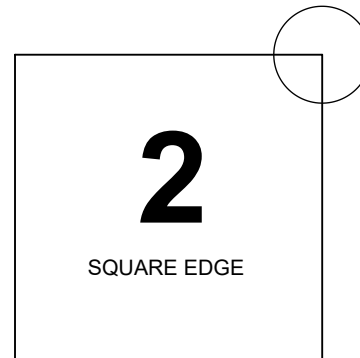
**CSDP-COL-**   **48**  **-01-01**

BEAM WIDTH (IN) ↑  
BEAM LENGTH (IN) ↑

1 - ROUNDED EDGE  
2 - SQUARE EDGE



DETAIL CF  
SCALE 2 : 5



DETAIL CE  
SCALE 2 : 5

EXAMPLE FOR 6"x6" BEAM WITH ROUNDED EDGE:

CSDP-COL-  48  -01-01

EXAMPLE FOR 4"x7" BEAM WITH SQUARE EDGE:

CSDP-COL-  48  -01-01

**PROPRIETARY-CONFIDENTIAL:** This document contains information proprietary to McCue Corporation. This information is not to be used in any way, disclosed to others or reproduced, in whole or in part, except as expressly authorized in writing by McCue Corporation. Any reproduction of this document, in whole or in part, must include this notice.

**Customer Drawing**  
**COLUMN WRAP**  
**SELECTION SHEET**



**McCue US**  
(978) 741-8500  
CustomerCare@mccue.com

**McCue UK**  
+44 1908-365-511  
UKCServices@mccue.com

**McCue China**  
+86-592-2200 790  
ChinaOffice@mccue.com

[mccue.com](http://mccue.com)