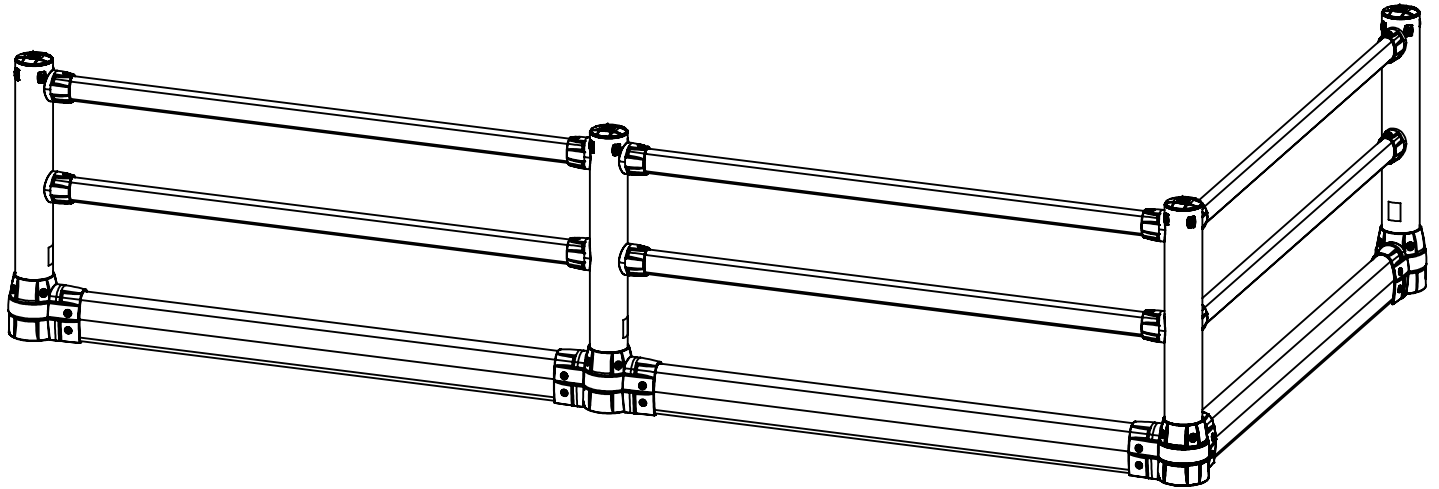
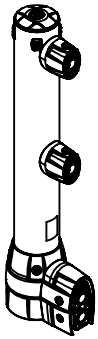


FLEX+ Pedestrian with Ground Guard

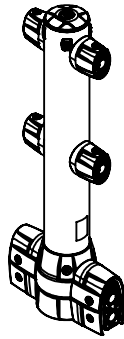
Installation Instructions



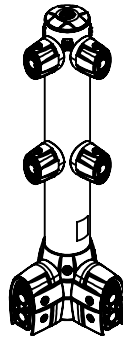
Kits



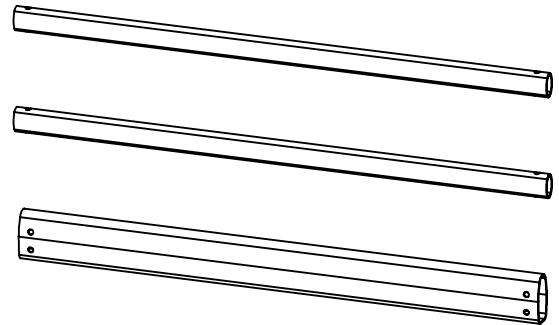
FPG-GG-K-END
Pedestrian with
Ground Guard
End Post



FPG-GG-K-MID
Pedestrian with
Ground Guard
Mid Post



FPG-GG-K-CNR
Pedestrian with
Ground Guard
Corner Post



FPG-GG-K-R-8
Pedestrian with
Ground Guard
Rail Kit



McCue Corporation
Danvers, Massachusetts, USA
+1(800) 800 8503
cservices@mccue.com

McCue UK
Milton Keynes, United Kingdom
+44 (0)1908 365 511
uksales@mccue.com

McCue Asia
Xiamen, Fujian, China
+8 592 2200790
rchen@mccue.com

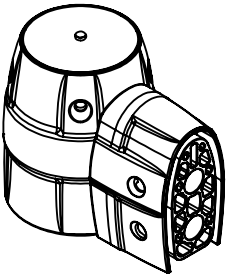
McCue Europe
Magirus-Deutz-Straße 14
89077 Ulm, Germany
+49 731 40 38 82 68
eusales@mccue.com

mccue.com

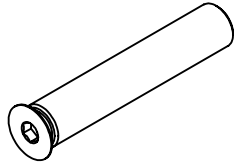


Components

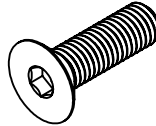
PolyCore Base End FLX-C-B-END



Base Cover End
FLX-BCV-END
QTY: 1



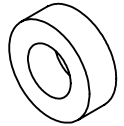
100mm Pin (Black)
FLX-PIN-100
QTY: 2



Flat Head Screw
HW-FH-M12
QTY: 6

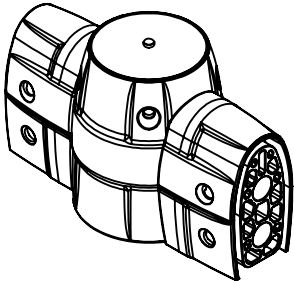


Anchor Washer
HW-WSH-ANC
QTY: 4

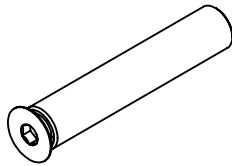


Damper
HW-DPR
QTY: 4

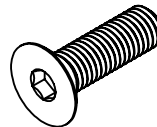
PolyCore Base Mid FLX-C-B-MID



Base Cover Mid
FLX-BCV-MID
QTY: 1



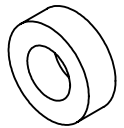
100mm Pin (Black)
FLX-PIN-100
QTY: 4



Flat Head Screw
HW-FH-M12
QTY: 8

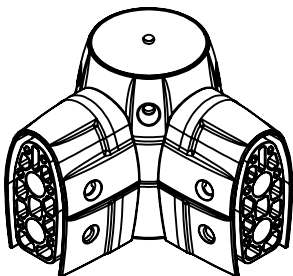


Anchor Washer
HW-WSH-ANC
QTY: 4

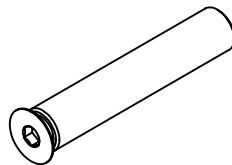


Damper
HW-DPR
QTY: 4

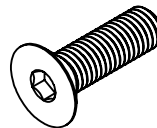
PolyCore Base Corner FLX-C-B-CNR



Base Cover Corner
FLX-BCV-CNR
QTY: 1



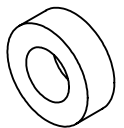
100mm Pin (Black)
FLX-PIN-100
QTY: 4



Flat Head Screw
HW-FH-M12
QTY: 8



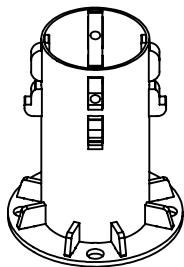
Anchor Washer
HW-WSH-ANC
QTY: 4



Damper
HW-DPR
QTY: 4

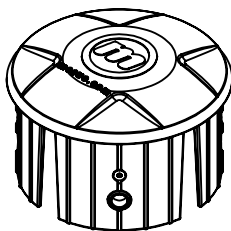
Components

Base Core FLX-COR



Base Core
FLX-COR
QTY: 1

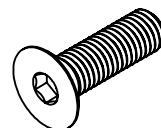
Cap FLX-C-CAP



Cap
FLX-CAP
QTY: 1

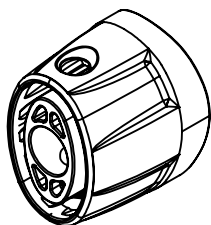


Post Washer
FLX-WSH
QTY: 4

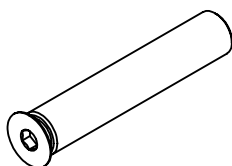


Flat Head Screw
HW-FH-M12
QTY: 4

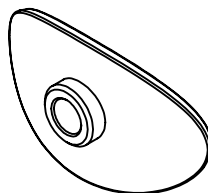
Top Rail Connector FLX-C-TRC



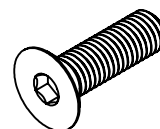
Top Rail Connector
FLX-TRC
QTY: 1



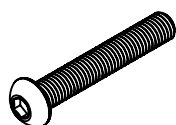
100mm Pin (Black)
FLX-PIN-100
QTY: 1



FastFit Insert
FLX-INS
QTY: 1



Flat Head Screw
HW-FH-M12
QTY: 1



Button Head Screw
HW-BH-M12
QTY: 1



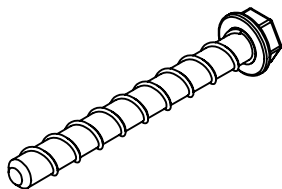
Anchor Washer
HW-WSH-M12
QTY: 1



Damper
HW-DPR
QTY: 1

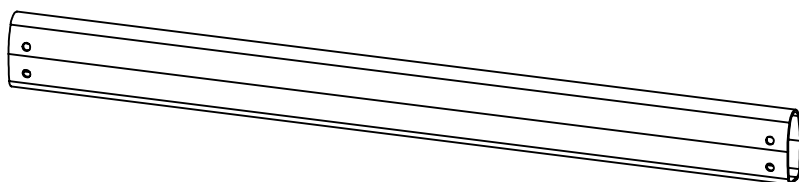
Components

Concrete Anchor (Imperial or Metric) HW-C-A1250 or HW-C-AM12-130



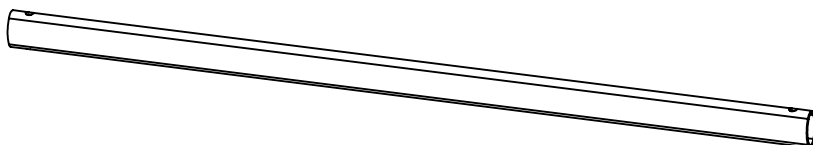
Concrete Anchor
HW-C-A1250 or
HW-C-AM12-130

Ground Guard Rail



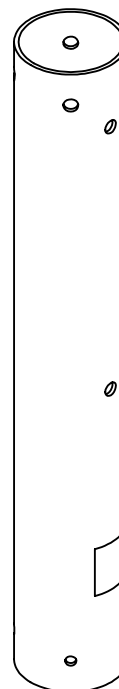
FGG-C-R-8
Ground Guard Rail

Top Rail



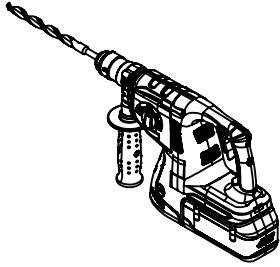
FTR-C-R-8
Top Rail

Post

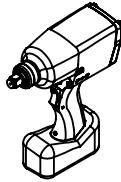


Post
FPG-C-P-END
FPG-C-P-MID
FPG-C-P-CNR

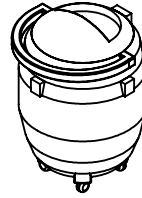
Required Tools



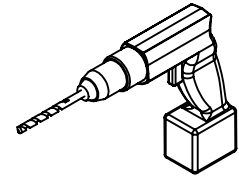
Hammer Drill With
Ø 12mm [1/2in] Masonry Bit



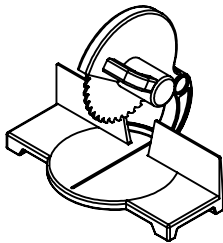
Impact
Driver



Vacuum



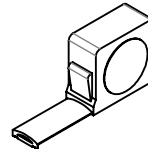
Drill with
Ø 20mm [3/4in] Bit



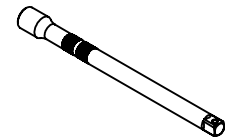
Mitre Saw



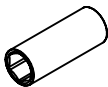
Hex Key
8mm [5/16in]



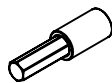
Measuring Tape



Socket Extender



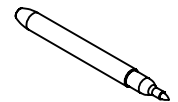
Hex Socket
17mm [3/4in]



Hex Bit
8mm [5/16in]



Chalk Line

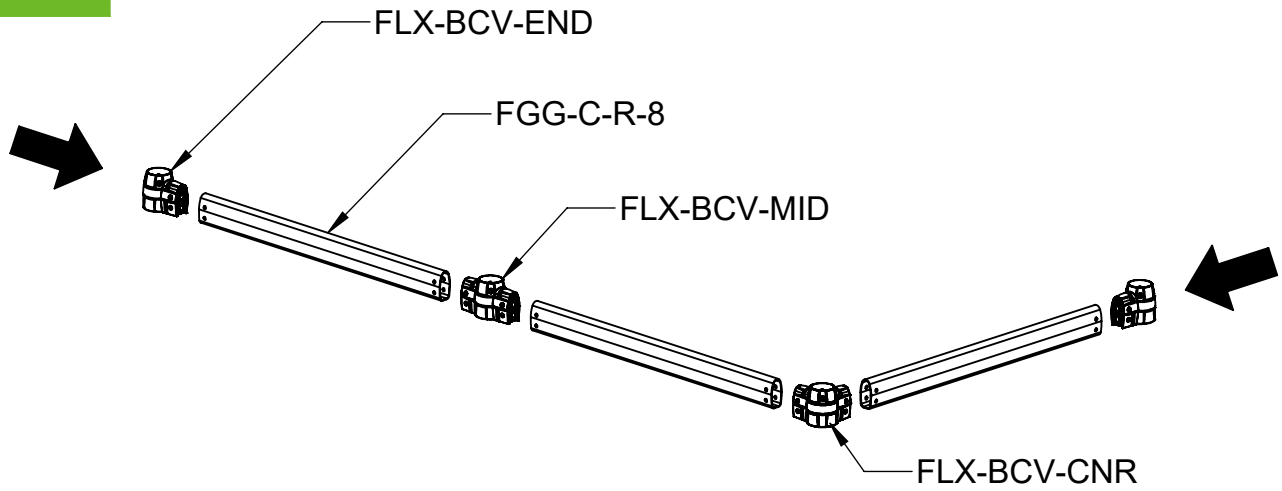


Marker

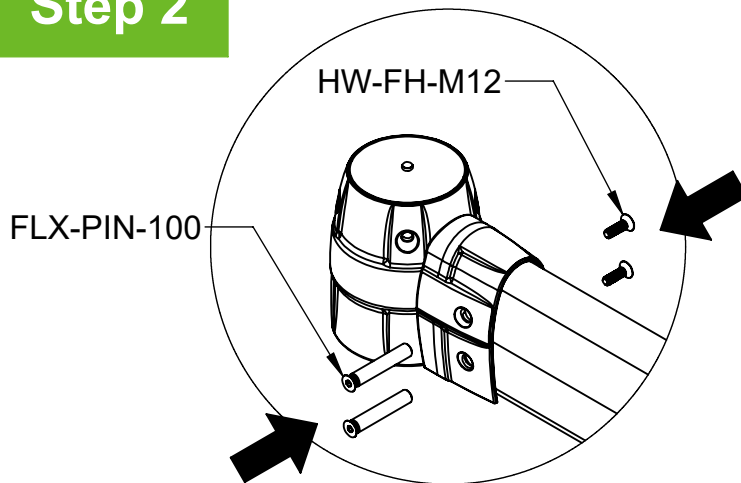


PPE recommended: High Visibility Vest, Steel Toe Boots, Work Gloves, Ear Protection, Dust Mask, Eye Protection.

Step 1



Step 2



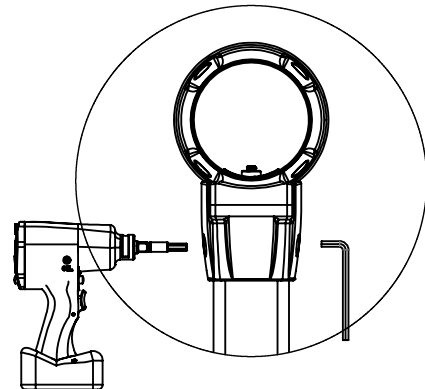
Impact
Driver



Hex Bit
8mm [5/16in]



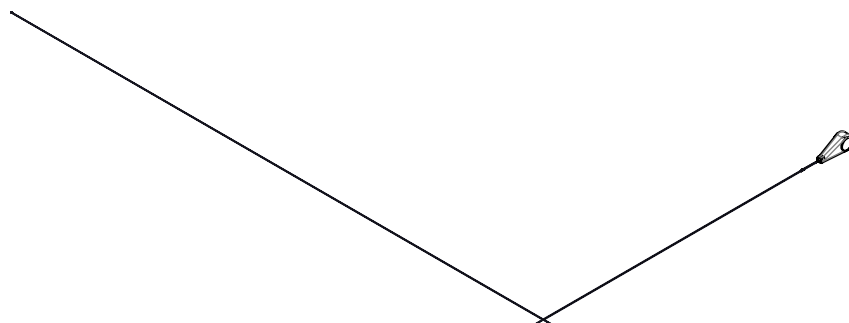
Hex Key
8mm [5/16in]



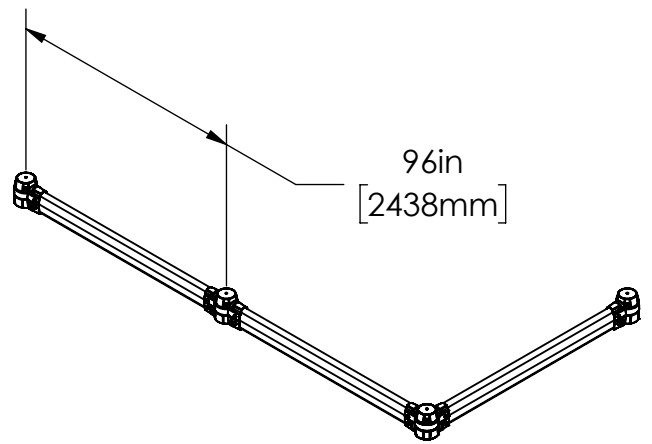
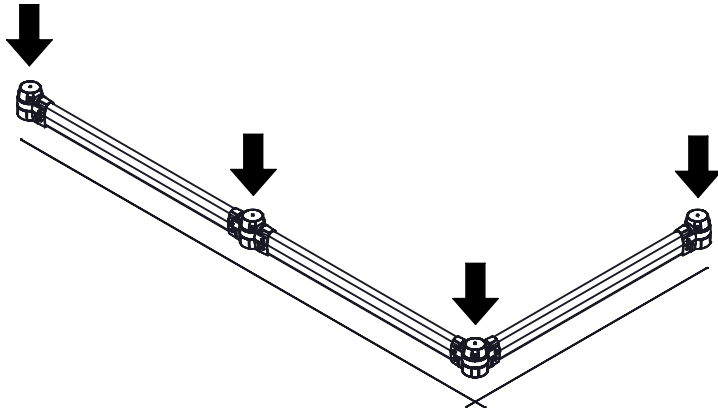
Step 3



Chalk Line



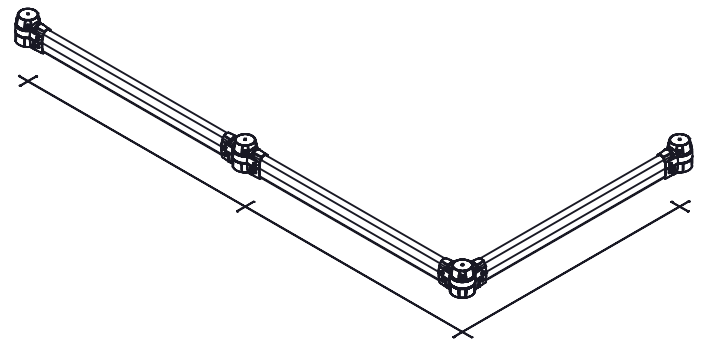
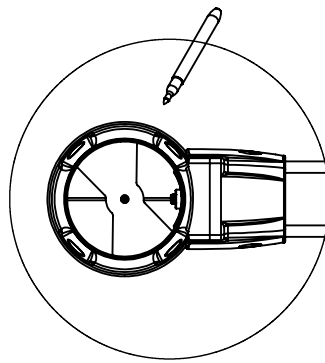
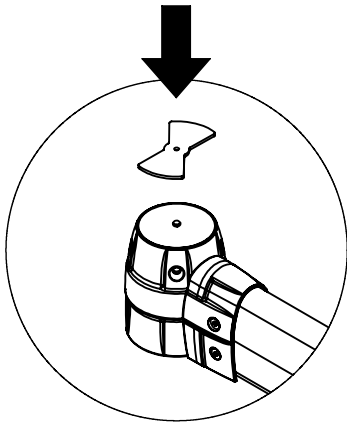
Step 4



Step 5

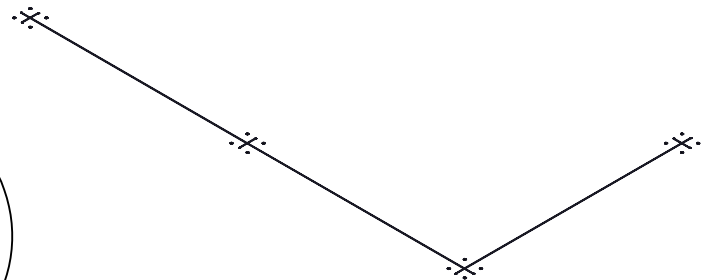
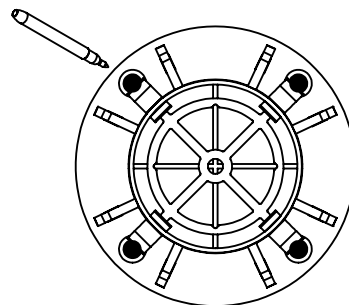
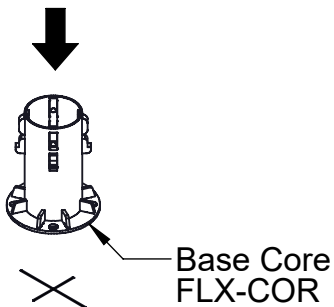
Marker

Centermark
Template

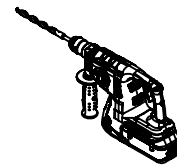
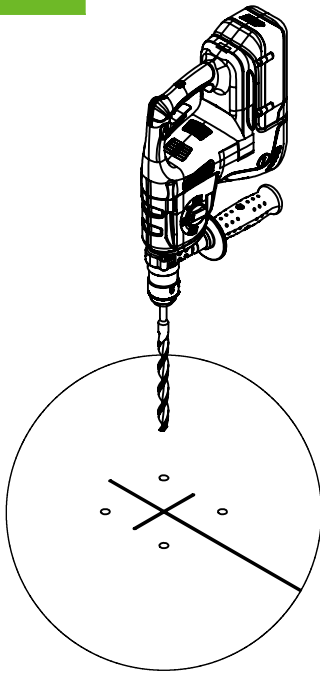


Step 6

Marker



Step 7

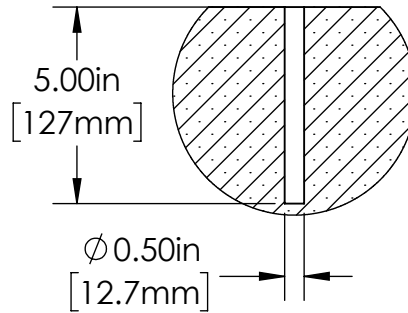


Hammer Drill With
 \varnothing 12mm or \varnothing 1/2in
 Masonry Bit

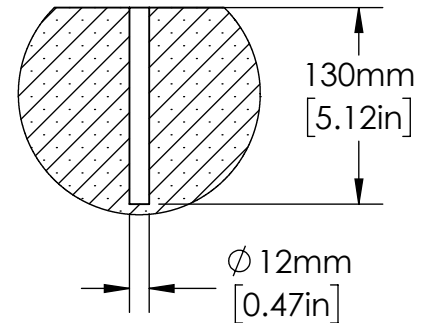


Vacuum

HOLE DETAIL
 IMPERIAL
 HW-C-A1250

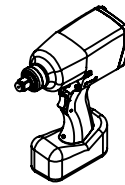
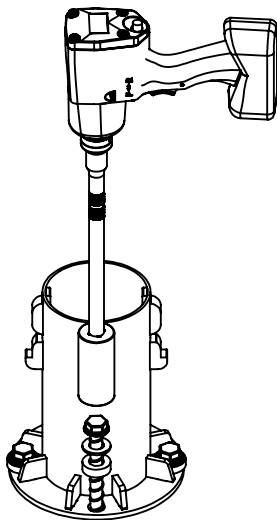


HOLE DETAIL
 METRIC
 HW-C-AM12-130

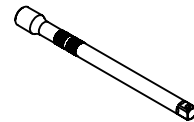


- PPE recommended: High Visibility Vest, Steel Toe Boots, Work Gloves, Ear Protection, Dust Mask, Eye Protection.
- Clean concrete dust by running the vacuum during drilling.

Step 8



Impact
 Driver

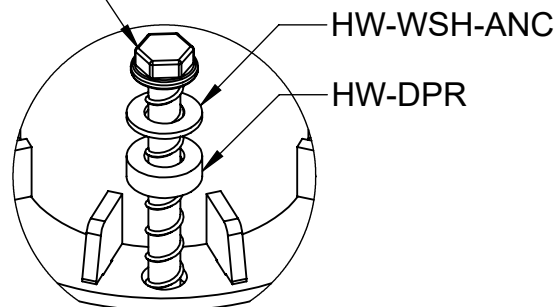


Extender



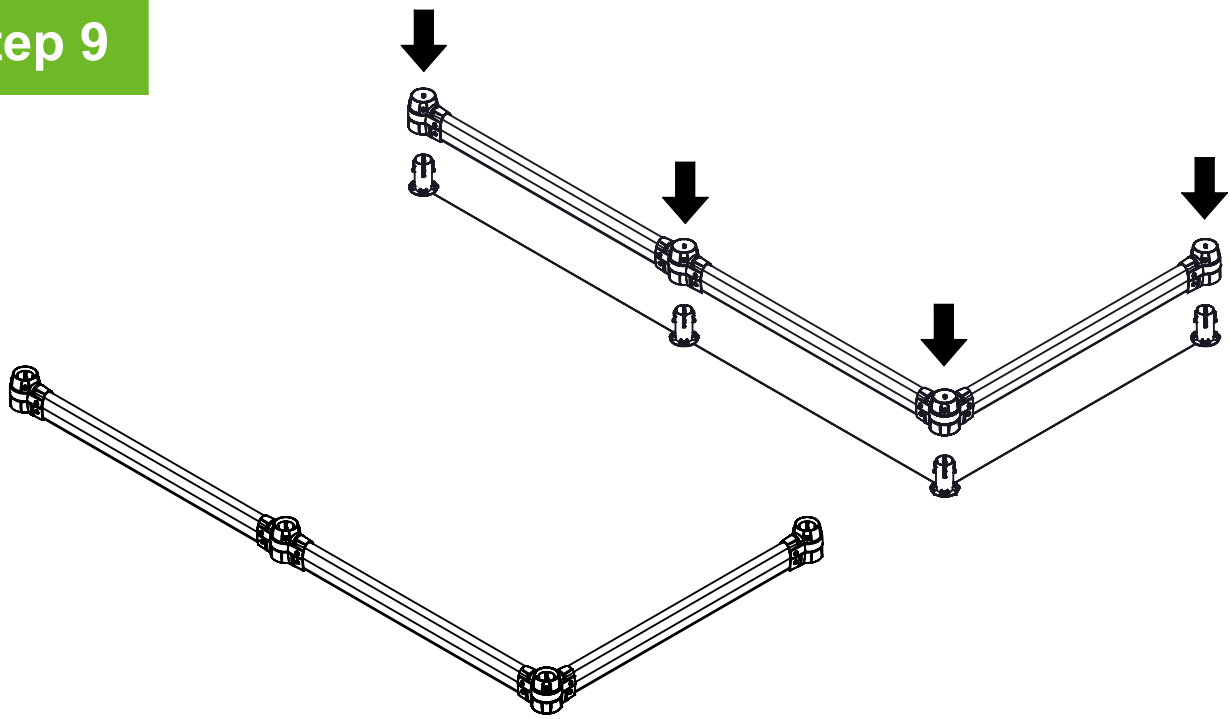
17mm [3/4in]
 Hex Socket

HW-C-A1250 or
 HW-C-AM12-130

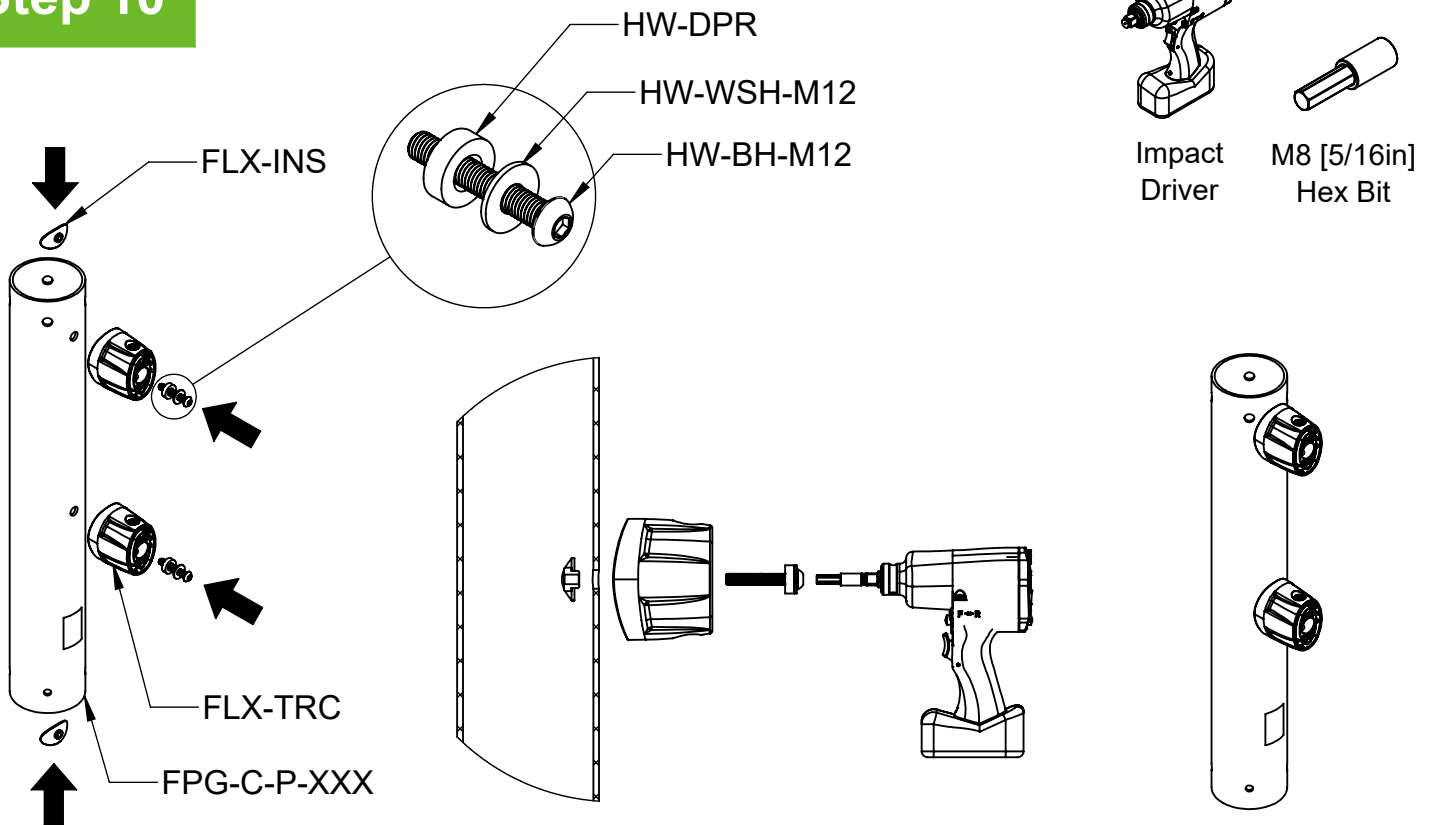


ANCHOR DETAIL

Step 9

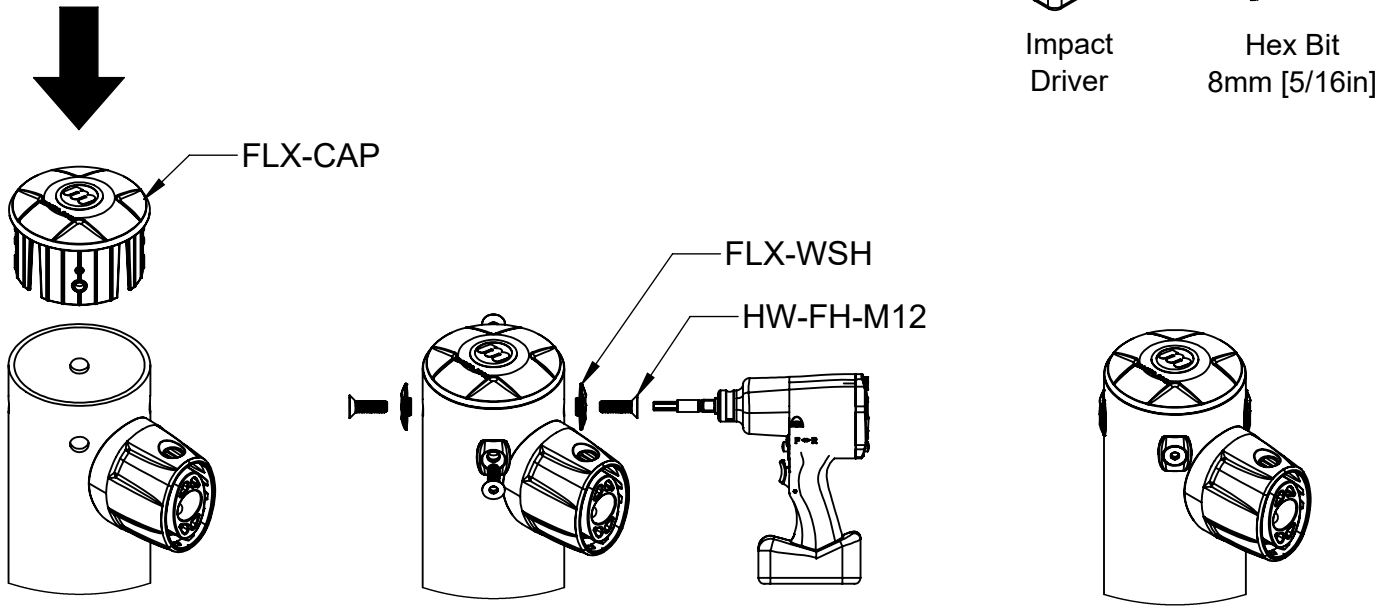


Step 10



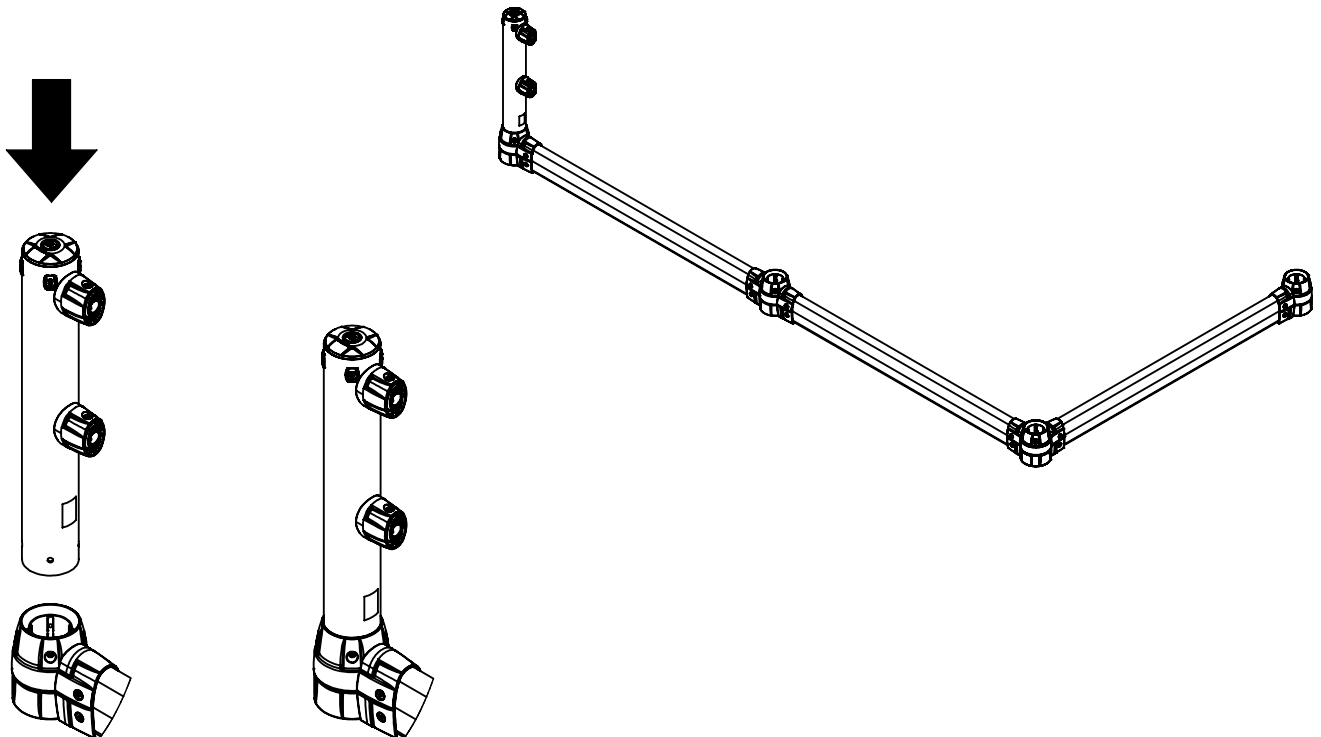
REPEAT FOR ALL POSTS

Step 11

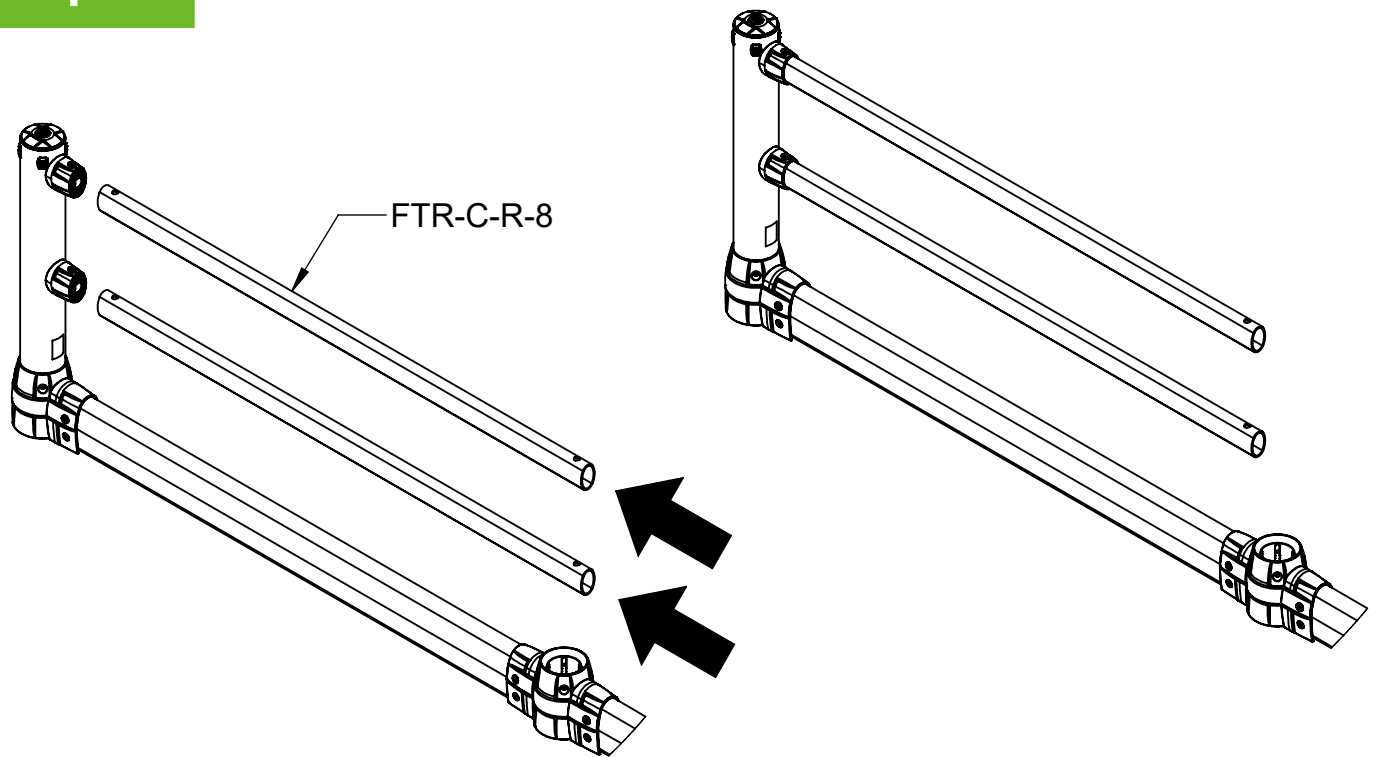


REPEAT FOR ALL POSTS

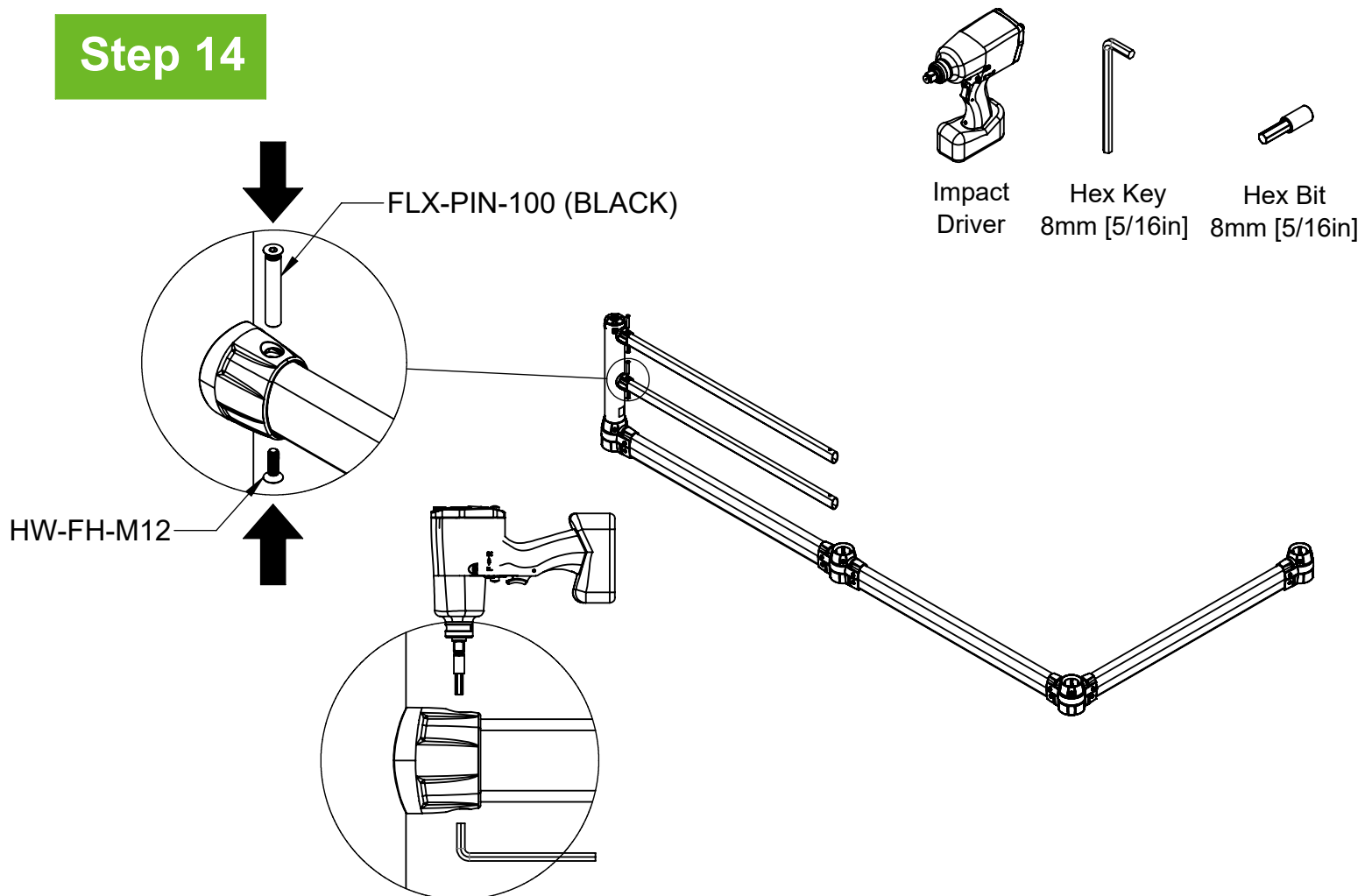
Step 12



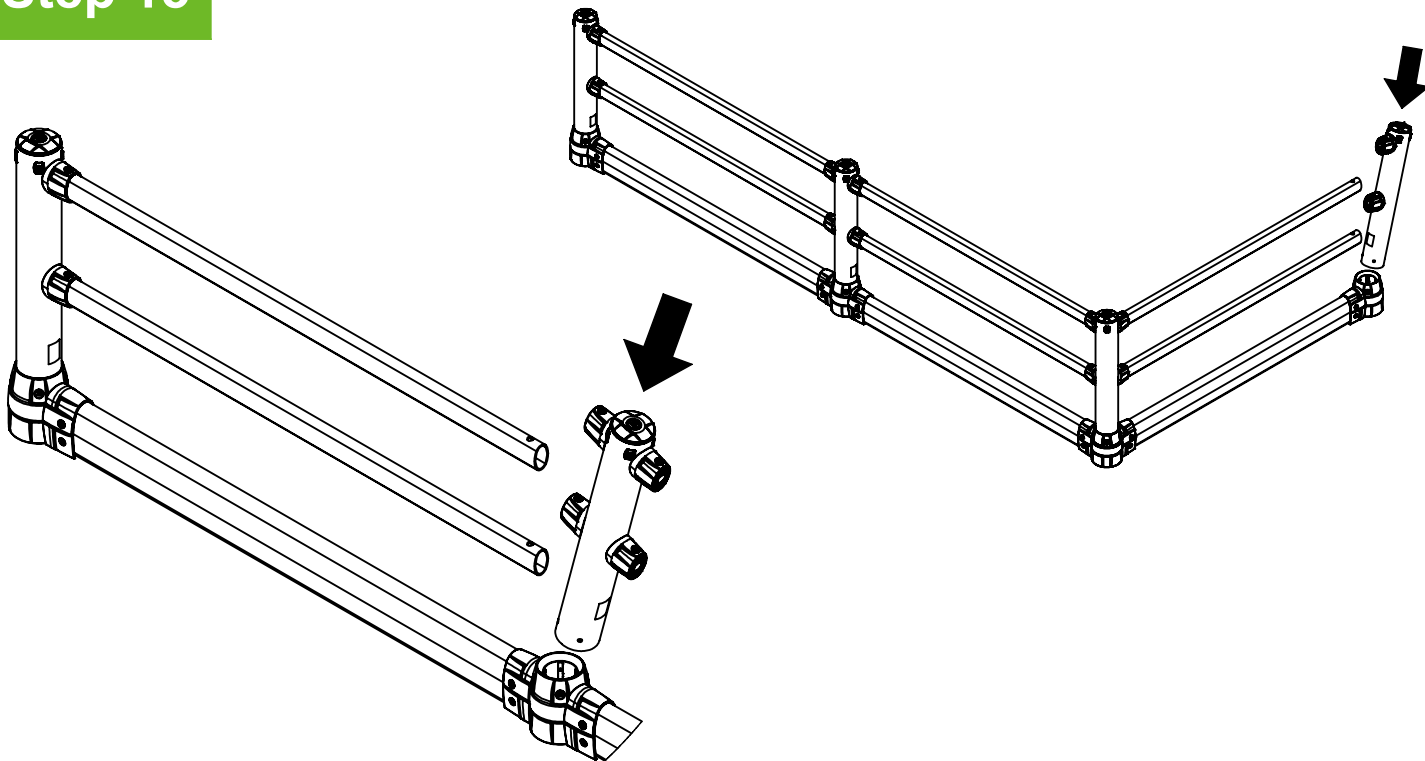
Step 13



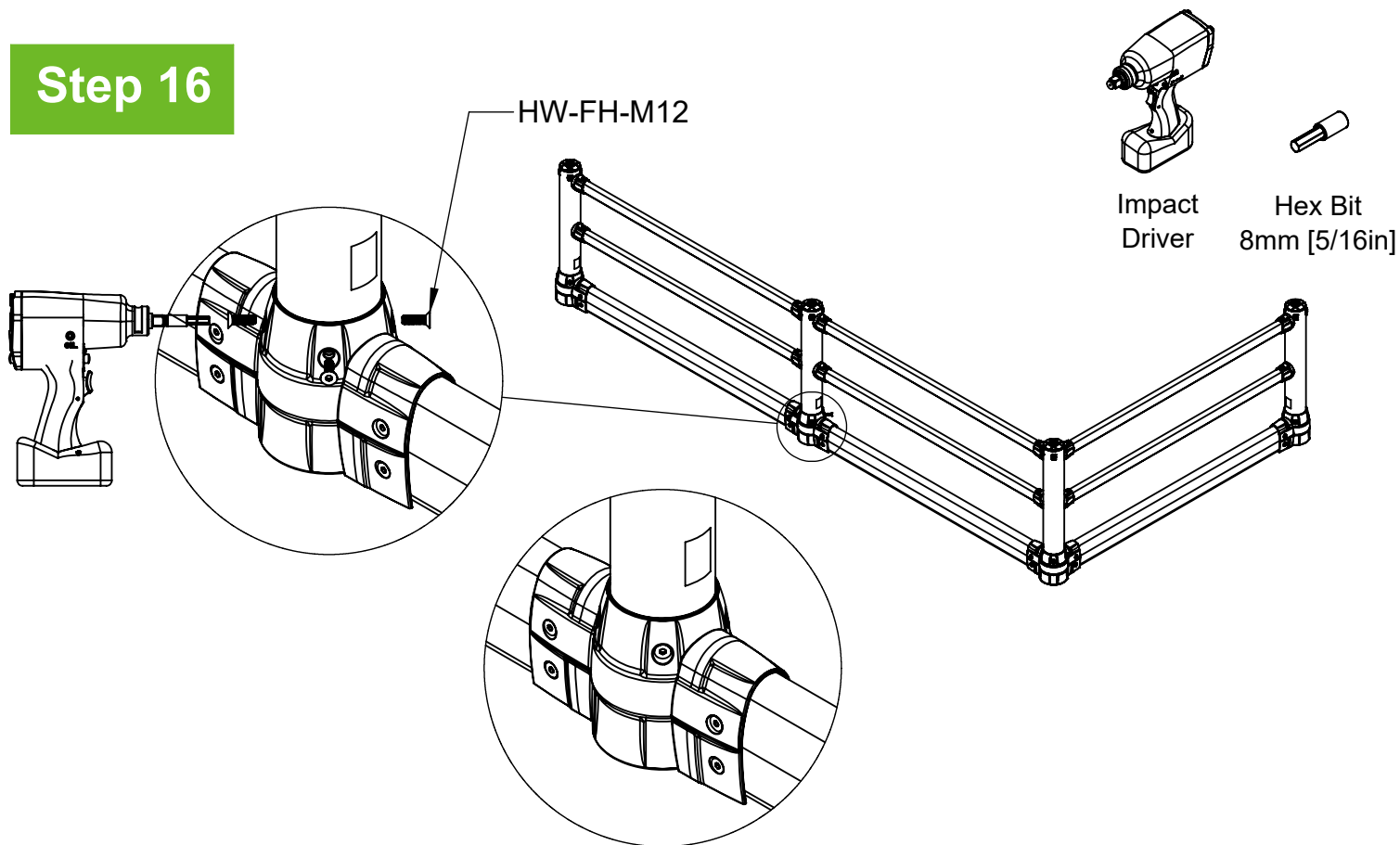
Step 14



Step 15



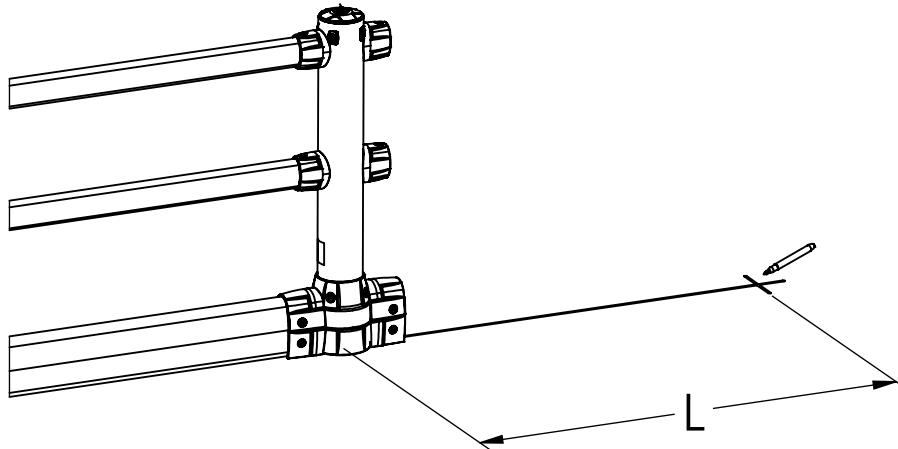
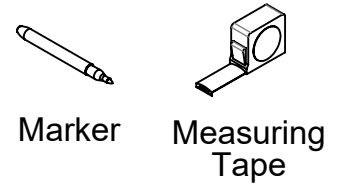
Step 16



REPEAT FOR ALL POSTS

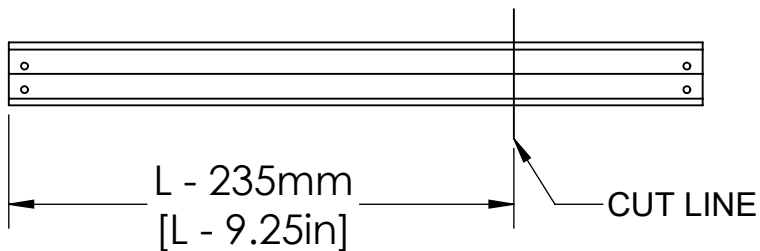
Appendix A: Custom Length Rails

Step A1

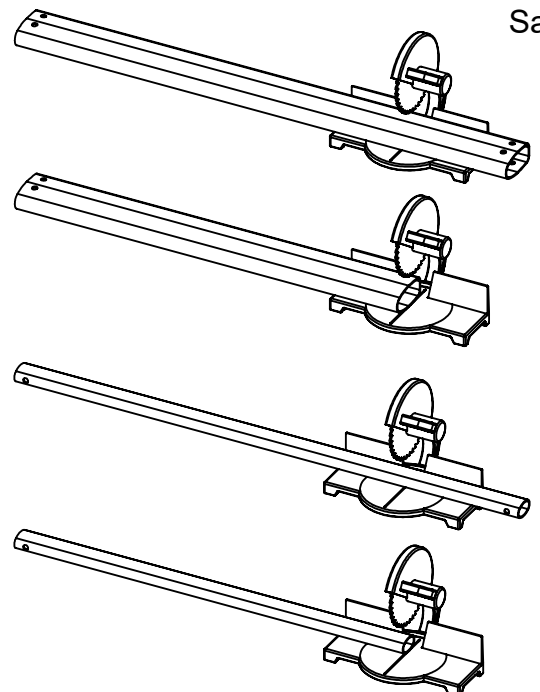
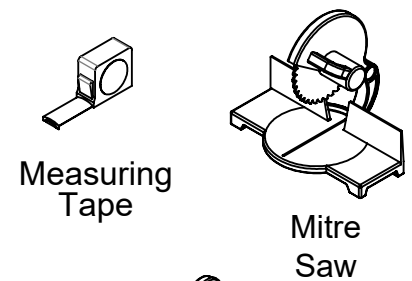
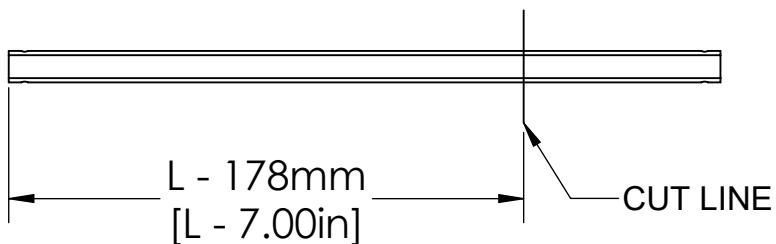


Step A2

Ground Guard Rail FGG-C-R-8



Top Rail FTR-C-R-8



Step 19



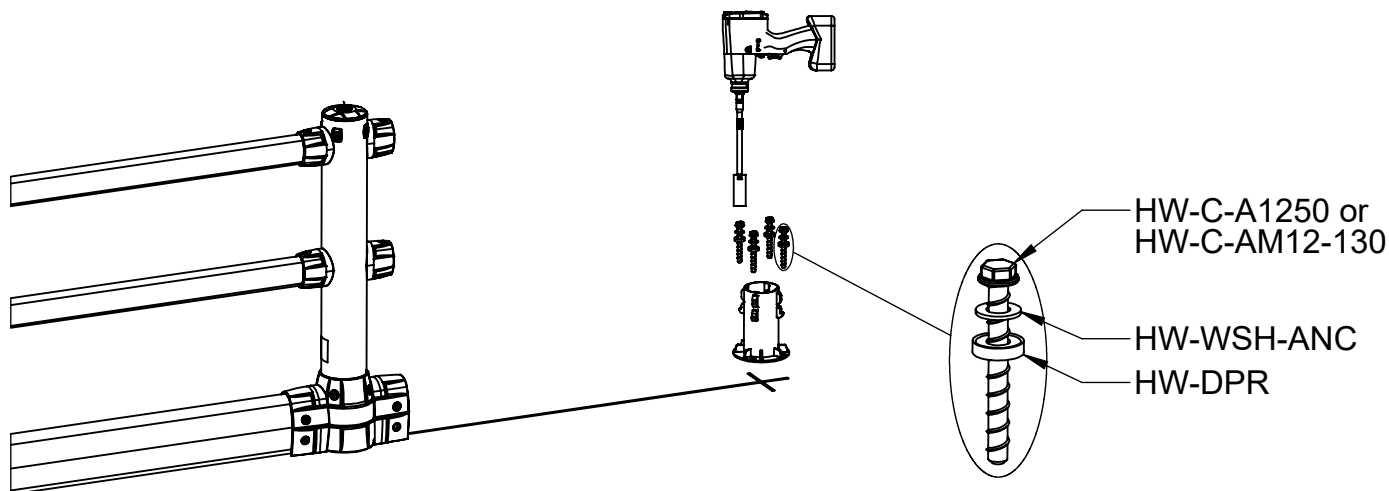
Impact
Driver



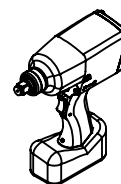
Socket
Extender



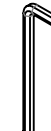
Hex Socket
17mm [3/4in]



Step 20



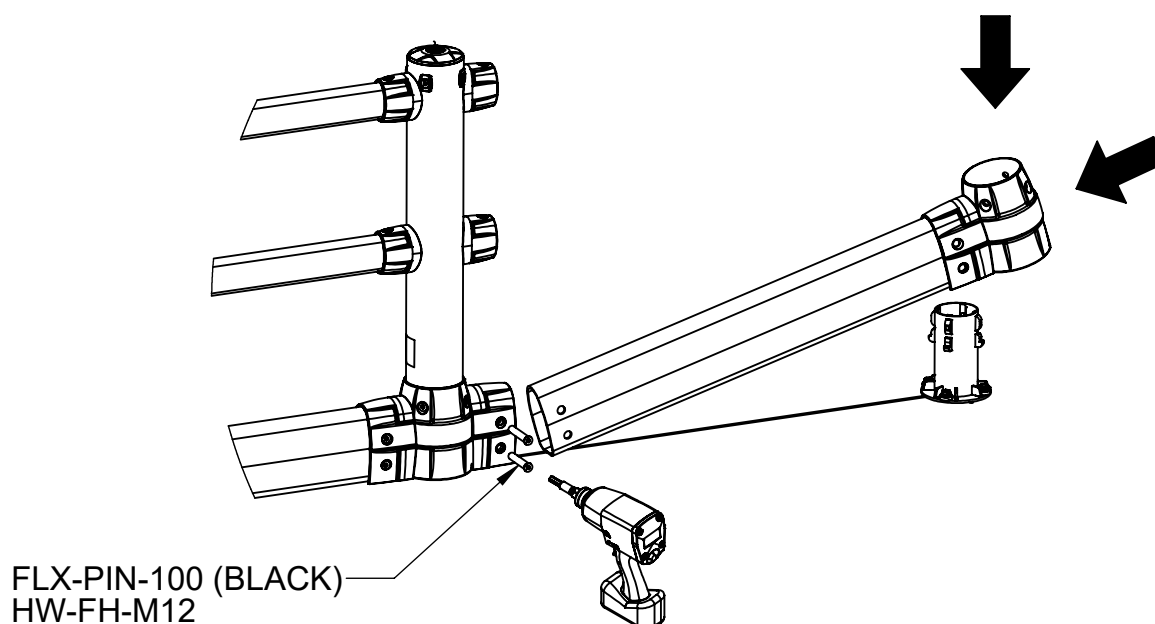
Impact
Driver



Hex Key
8mm [5/16in]



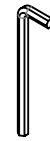
Hex Bit
8mm [5/16in]



Step 21



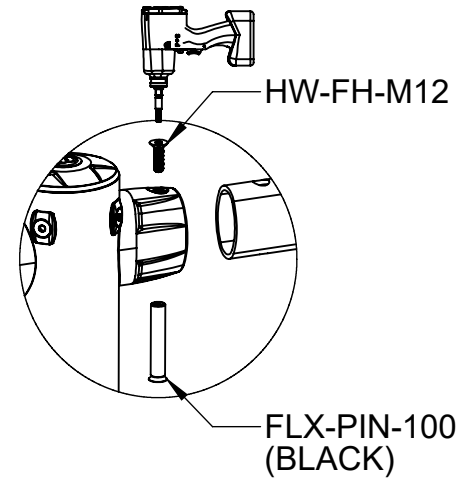
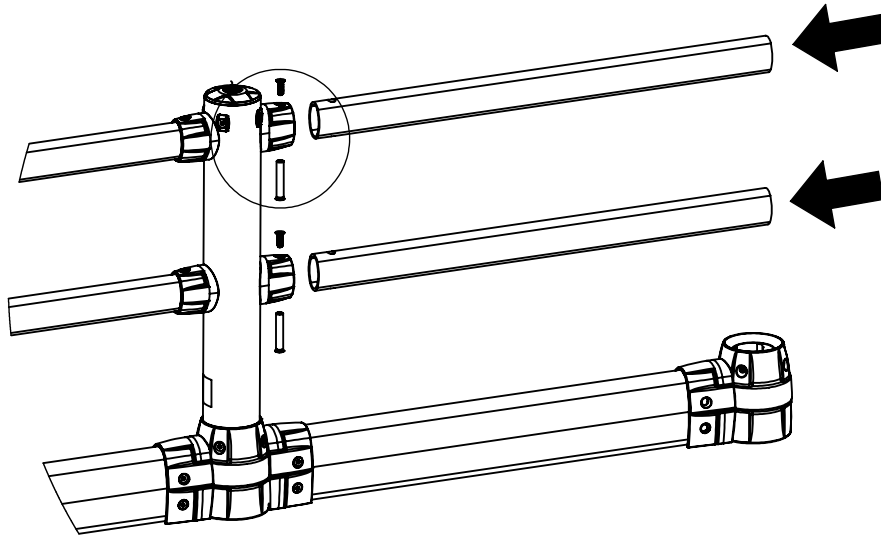
Impact
Driver



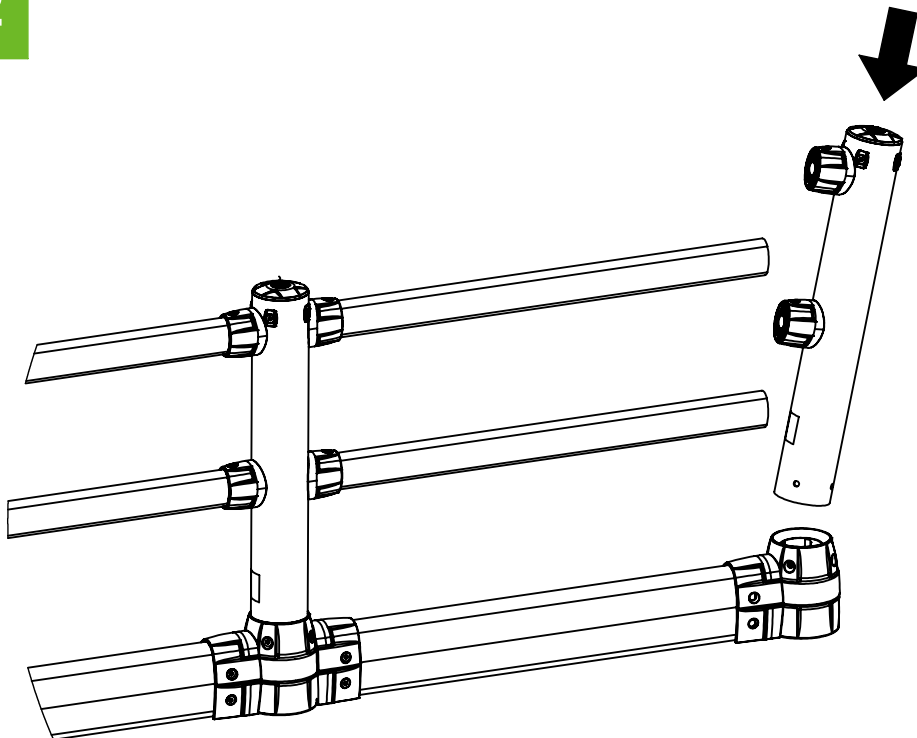
Hex Key
8mm [5/16in]



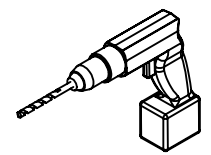
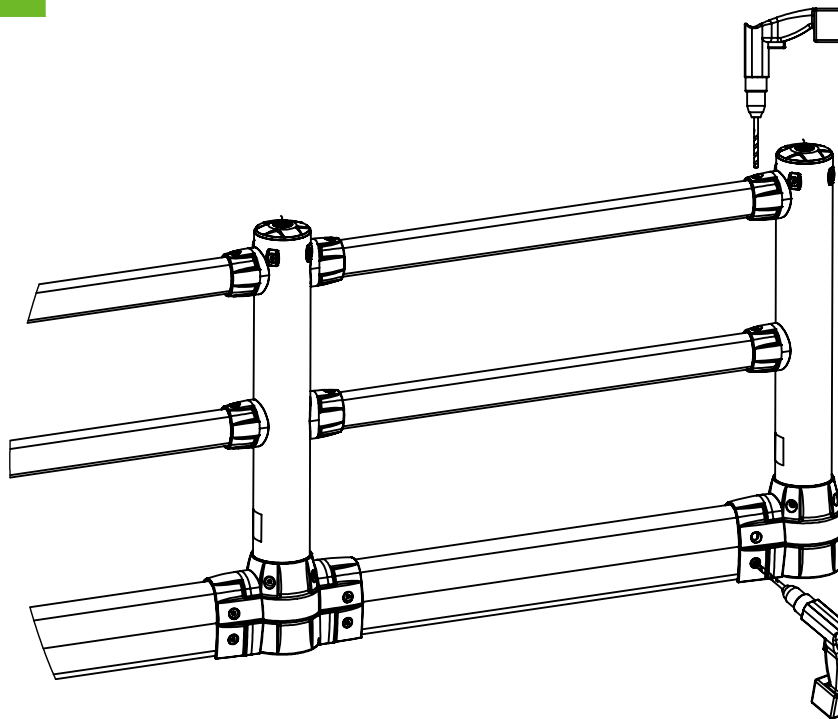
Hex Bit
8mm [5/16in]



Step 22



Step 23

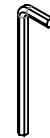


Drill with
20mm [3/4in] Bit

Step 24



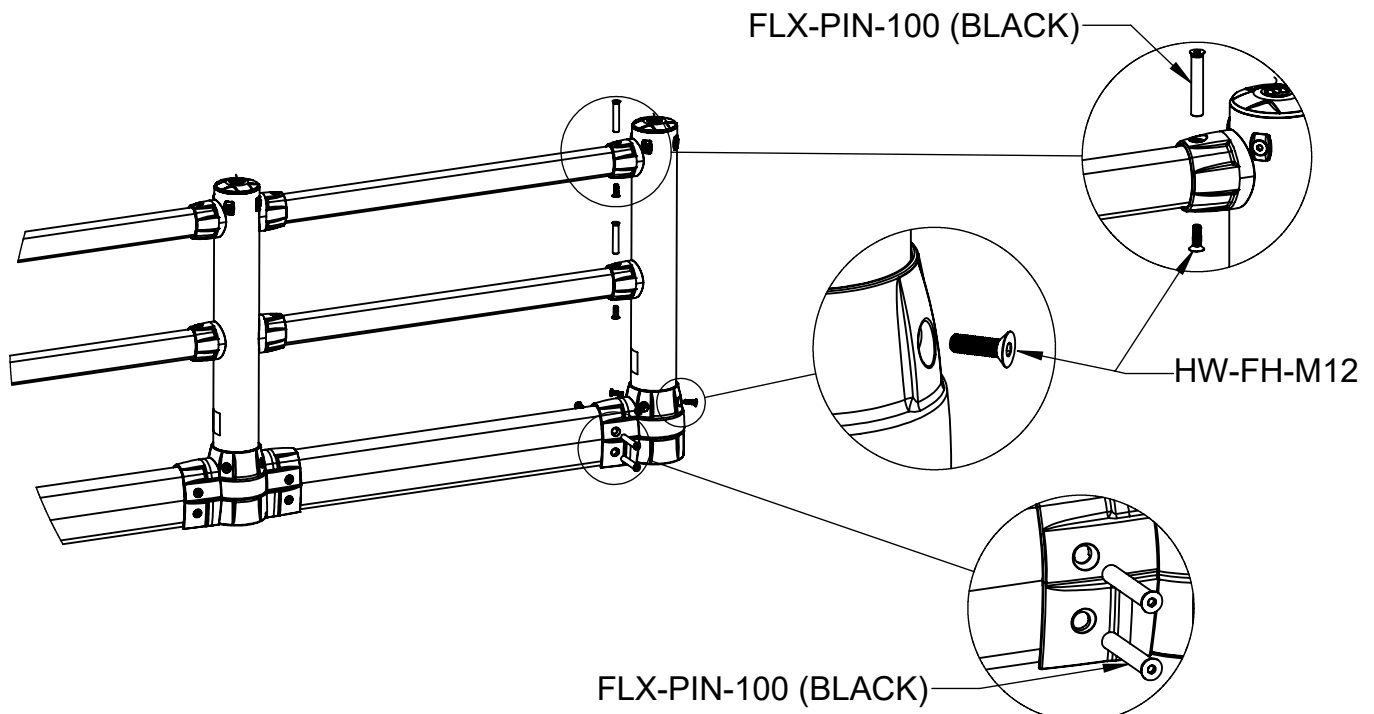
Impact
Driver



Hex Key
8mm [5/16in]



Hex Bit
8mm [5/16in]



Installation Complete

