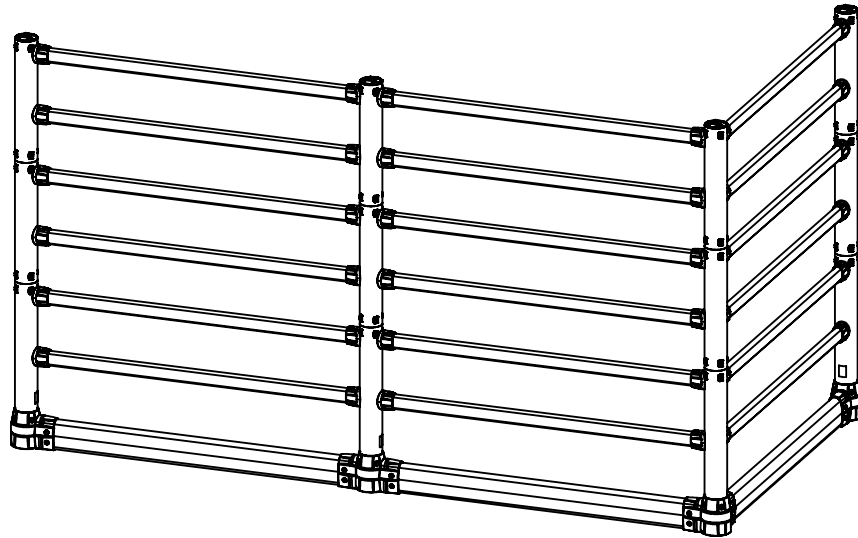


# FLEX+ Topple with Ground Guard

## Installation Instructions



### Kits



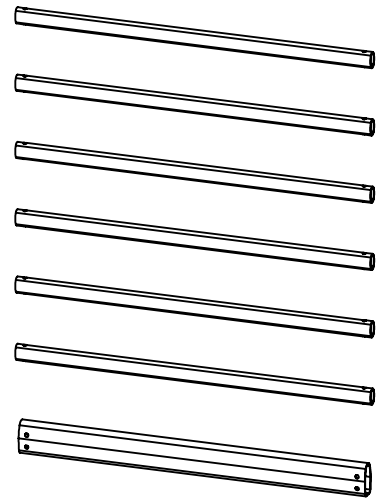
**FTG-GG-K-END**  
Topple with  
Ground Guard  
End Post



**FTG-GG-K-MID**  
Topple with  
Ground Guard  
Mid Post



**FTG-GG-K-CNR**  
Topple with  
Ground Guard  
Corner Post



**FTG-GG-K-R-8**  
Topple with  
Ground Guard  
Rail Kit



**McCue Corporation**  
Danvers, Massachusetts, USA  
+1(800) 800 8503  
[cservices@mccue.com](mailto:cservices@mccue.com)

**McCue UK**  
Milton Keynes, United Kingdom  
+44 (0)1908 365 511  
[uksales@mccue.com](mailto:uksales@mccue.com)

**McCue Asia**  
Xiamen, Fujian, China  
+8 592 2200790  
[rchen@mccue.com](mailto:rchen@mccue.com)

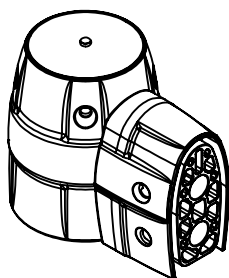
**McCue Europe**  
Magirus-Deutz-Straße 14  
89077 Ulm, Germany  
+49 731 40 38 82 68  
[eusales@mccue.com](mailto:eusales@mccue.com)

**mccue.com**

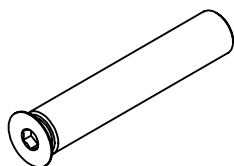


## Components

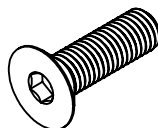
### PolyCore Base End FLX-C-B-END



Base Cover End  
FLX-BCV-END  
QTY: 1



100mm Pin (Black)  
FLX-PIN-100  
QTY: 2



Flat Head Screw  
HW-FH-M12  
QTY: 6

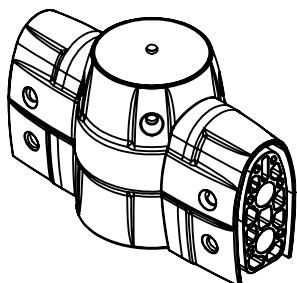


Anchor Washer  
HW-WSH-ANC  
QTY: 4

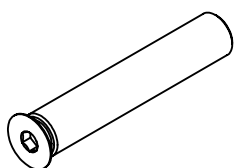


Damper  
HW-DPR  
QTY: 4

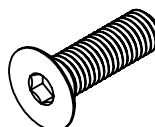
### PolyCore Base Mid FLX-C-B-MID



Base Cover Mid  
FLX-BCV-MID  
QTY: 1



100mm Pin (Black)  
FLX-PIN-100  
QTY: 4



Flat Head Screw  
HW-FH-M12  
QTY: 8

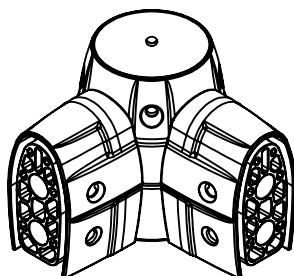


Anchor Washer  
HW-WSH-ANC  
QTY: 4

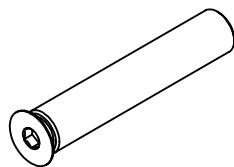


Damper  
HW-DPR  
QTY: 4

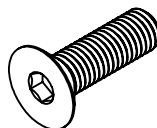
### PolyCore Base Corner FLX-C-B-CNR



Base Cover Corner  
FLX-BCV-CNR  
QTY: 1



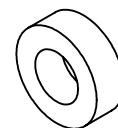
100mm Pin (Black)  
FLX-PIN-100  
QTY: 4



Flat Head Screw  
HW-FH-M12  
QTY: 8



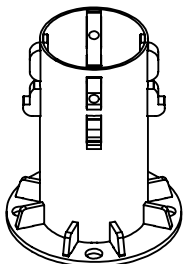
Anchor Washer  
HW-WSH-ANC  
QTY: 4



Damper  
HW-DPR  
QTY: 4

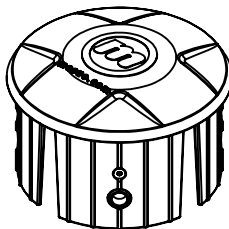
## Components

### Base Core FLX-COR



Base Core  
FLX-COR

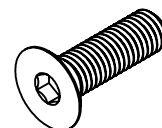
### Cap FLX-C-CAP



Cap  
FLX-CAP  
QTY: 1

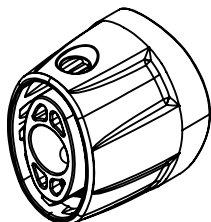


Post Washer  
FLX-WSH  
QTY: 4

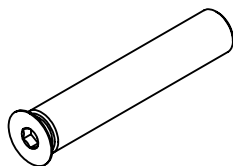


Flat Head Screw  
HW-FH-M12  
QTY: 4

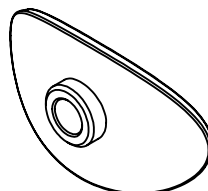
### Top Rail Connector FLX-C-TRC



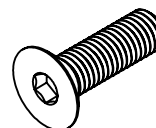
Top Rail Connector  
FLX-TRC  
QTY: 1



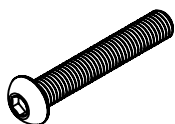
100mm Pin (Black)  
FLX-PIN-100  
QTY: 1



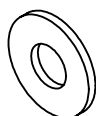
FastFit Insert  
FLX-INS  
QTY: 1



Flat Head Screw  
HW-FH-M12  
QTY: 1



Button Head Screw  
HW-BH-M12  
QTY: 1



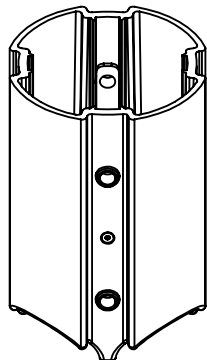
Connector Washer  
HW-WSH-M12  
QTY: 1



Damper  
HW-DPR  
QTY: 1

## Components

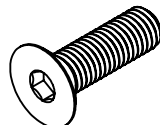
### Post Extender FLX-C-EXT



Post Extender  
FLX-EXT  
QTY: 1

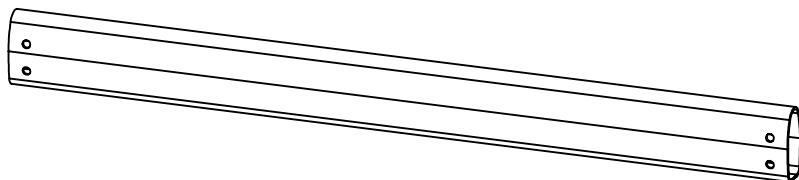


Post Washer  
FLX-WSH  
QTY: 8



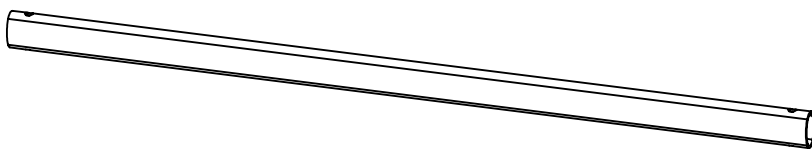
Flat Head Screw  
HW-FH-M12  
QTY: 8

### Ground Guard Rail FGG-C-R-8



Ground Guard Rail  
FGG-C-R-8

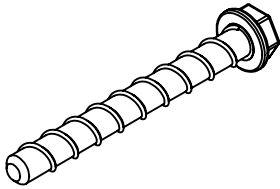
### Top Rail FTR-C-R-8



Top Rail  
FTR-C-R-8

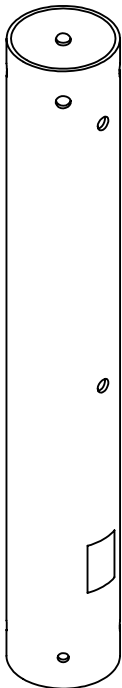


### Concrete Anchor (Imperial or Metric) HW-C-A1250 or HW-C-AM12-130



Concrete Anchor  
HW-C-A1250 or  
HW-C-AM12-130

### Pedestrian Post FPG-C-P-XXX



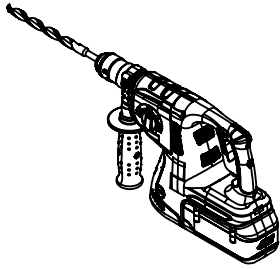
Pedestrian Post  
FPG-C-P-END  
FPG-C-P-MID  
FPG-C-P-CNR

### Topple Post FTG-C-P-XXX

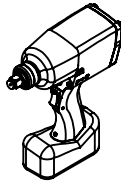


Topple Post  
FTG-C-P-END  
FTG-C-P-MID  
FTG-C-P-CNR

## Required Tools



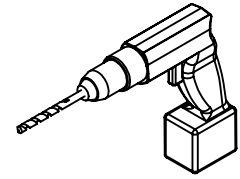
Hammer Drill With  
 $\varnothing$  12mm or  $\varnothing$  1/2in  
Masonry Bit



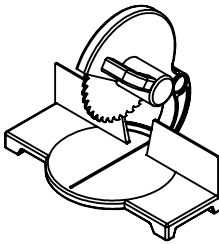
Impact  
Driver



Vacuum



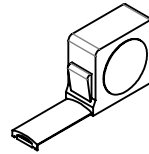
Drill with  
 $\varnothing$  20mm [3/4in] Bit



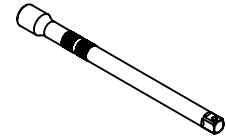
Mitre Saw



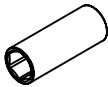
Hex Key  
8mm [5/16in]



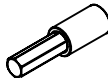
Measuring Tape



Socket Extender



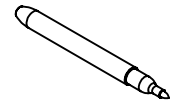
Hex Socket  
17mm [3/4in]



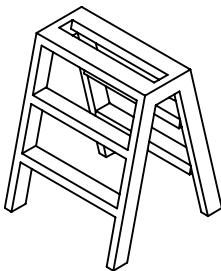
Hex Bit  
8mm [5/16in]



Chalk Line



Marker

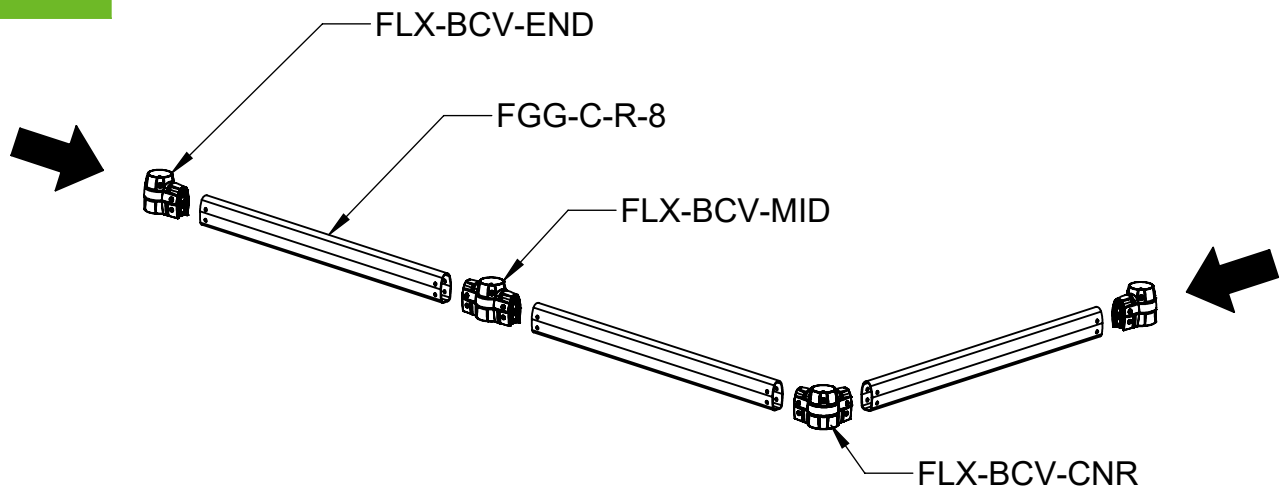


Step Ladder

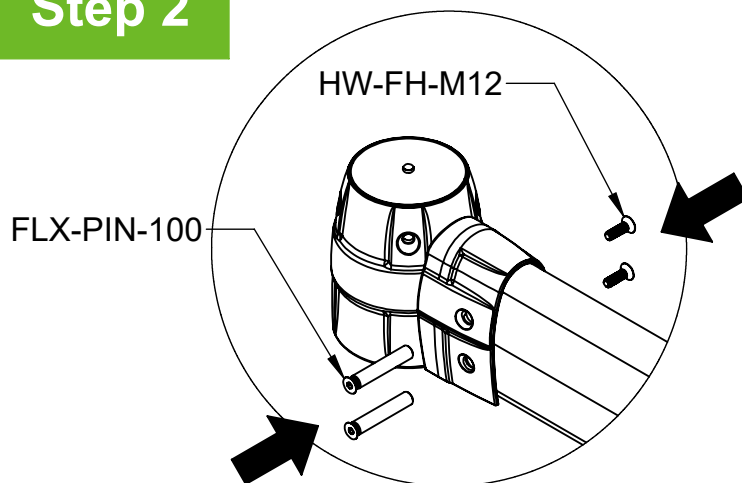


**PPE recommended: High Visibility Vest, Steel Toe Boots, Work Gloves, Ear Protection, Dust Mask, Eye Protection.**

## Step 1



## Step 2



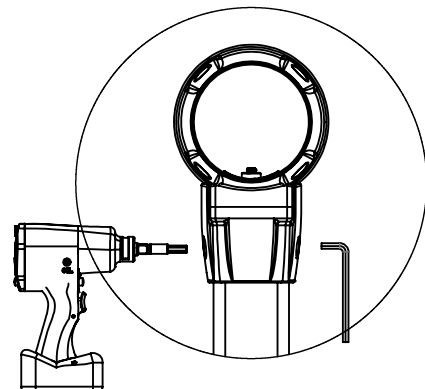
Impact  
Driver



Hex Bit  
8mm [5/16in]



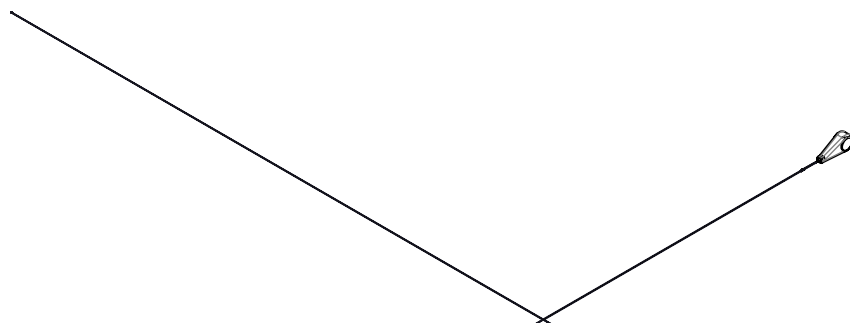
Hex Key  
8mm [5/16in]



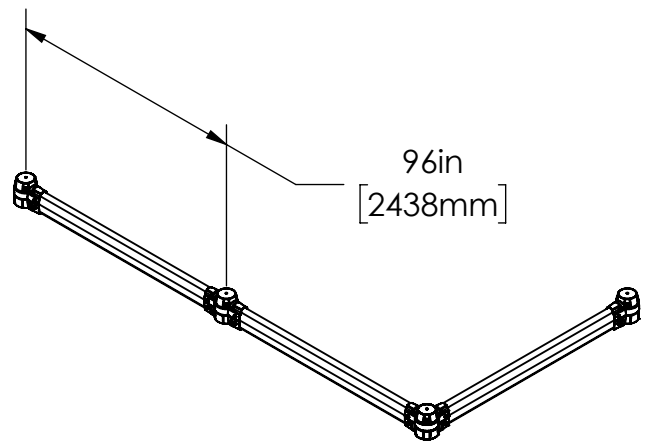
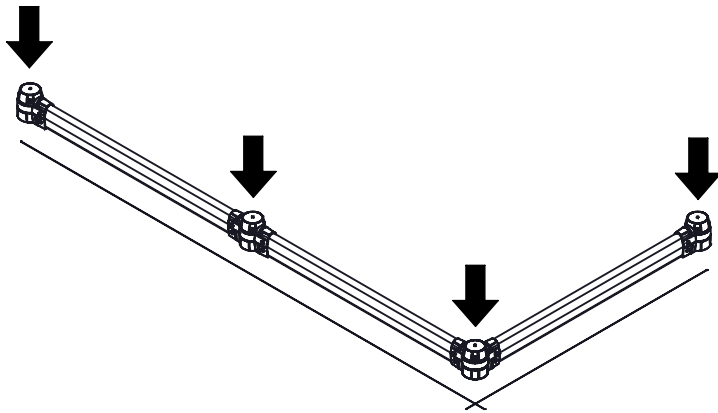
## Step 3



Chalk Line



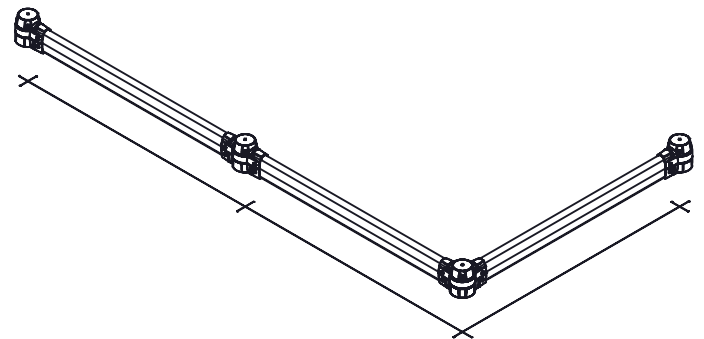
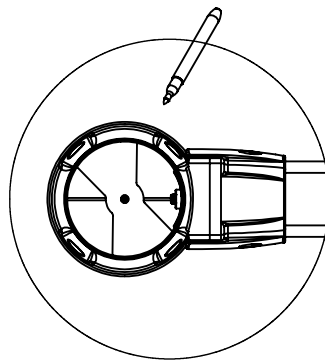
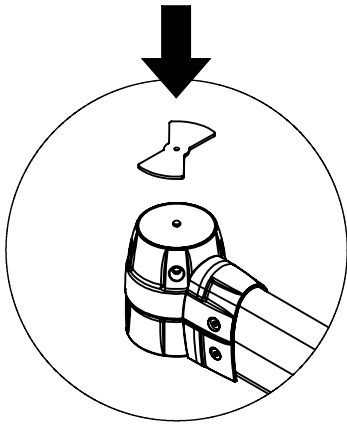
## Step 4



## Step 5

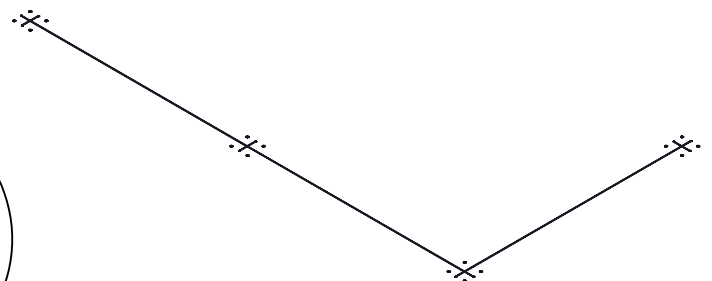
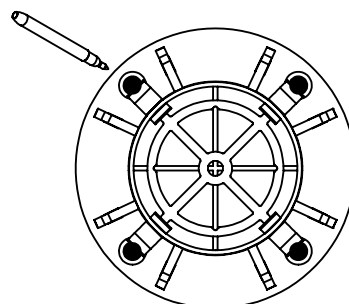
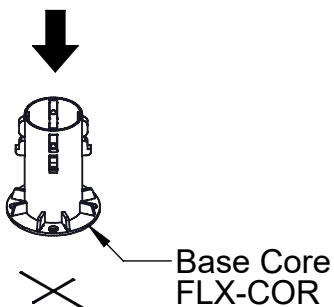
Marker

Centermark  
Template

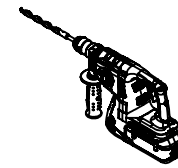
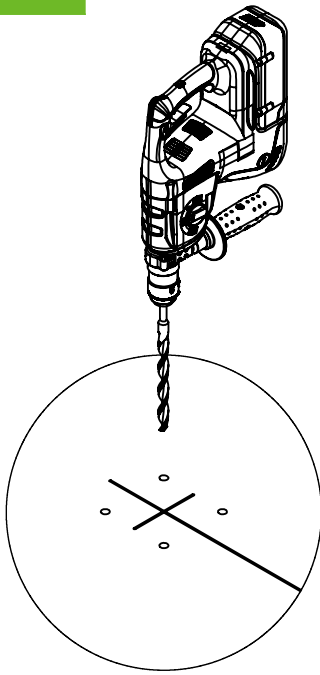


## Step 6

Marker



## Step 7

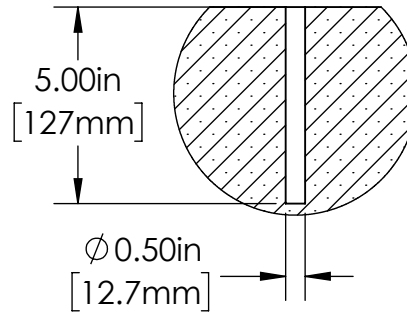


Hammer Drill With  
 $\varnothing$  12mm or  $\varnothing$  1/2in  
 Masonry Bit

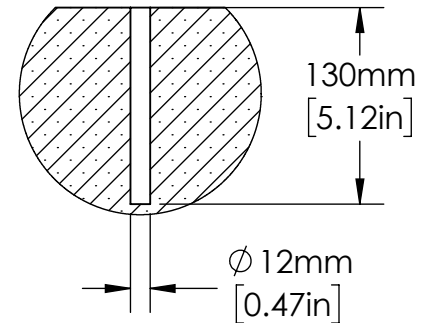


Vacuum

HOLE DETAIL  
 IMPERIAL  
 HW-C-A1250

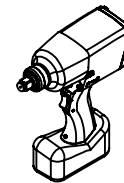
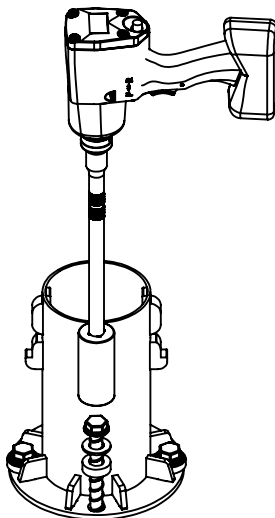


HOLE DETAIL  
 METRIC  
 HW-C-AM12-130

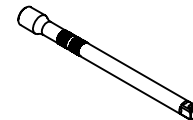


- PPE recommended: High Visibility Vest, Steel Toe Boots, Work Gloves, Ear Protection, Dust Mask, Eye Protection.
- Clean concrete dust by running the vacuum during drilling.

## Step 8



Impact  
 Driver

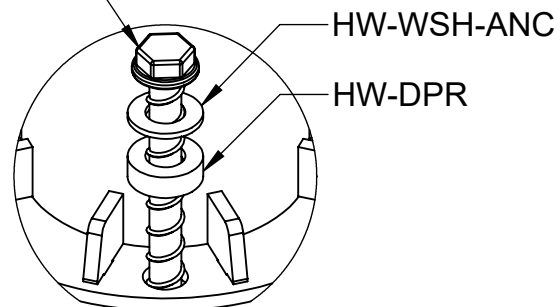


Extender



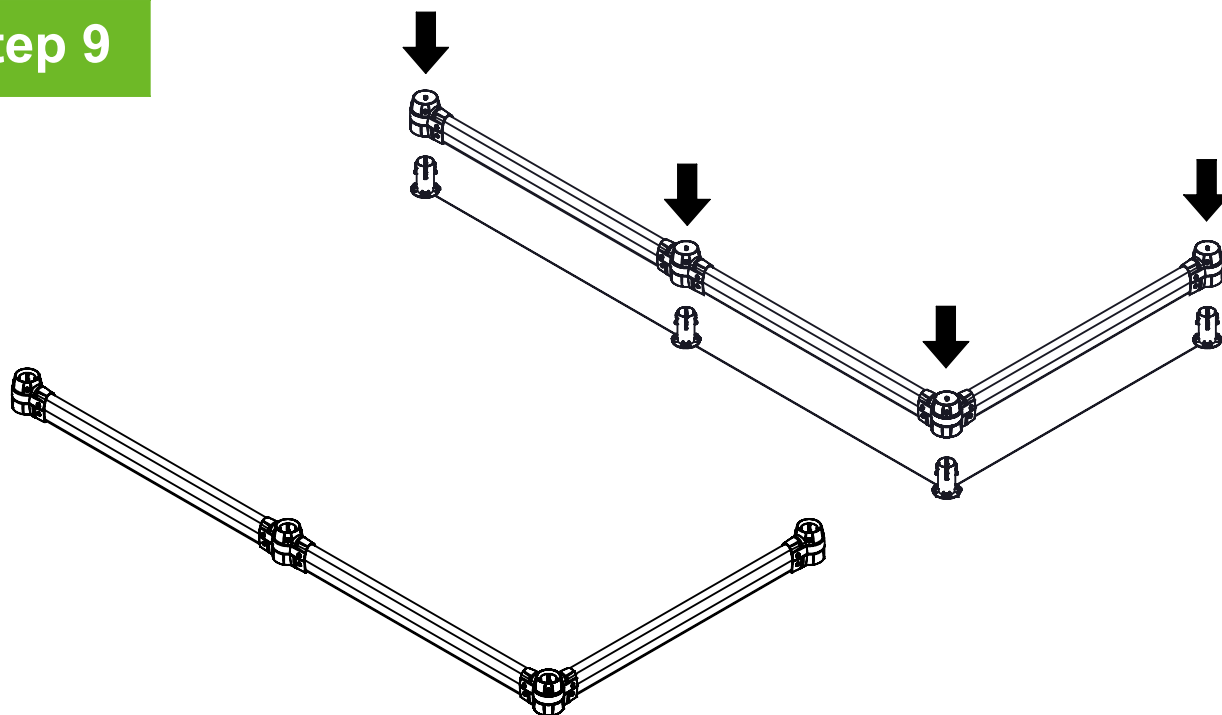
17mm [3/4in]  
 Hex Socket

HW-C-A1250 or  
 HW-C-AM12-130

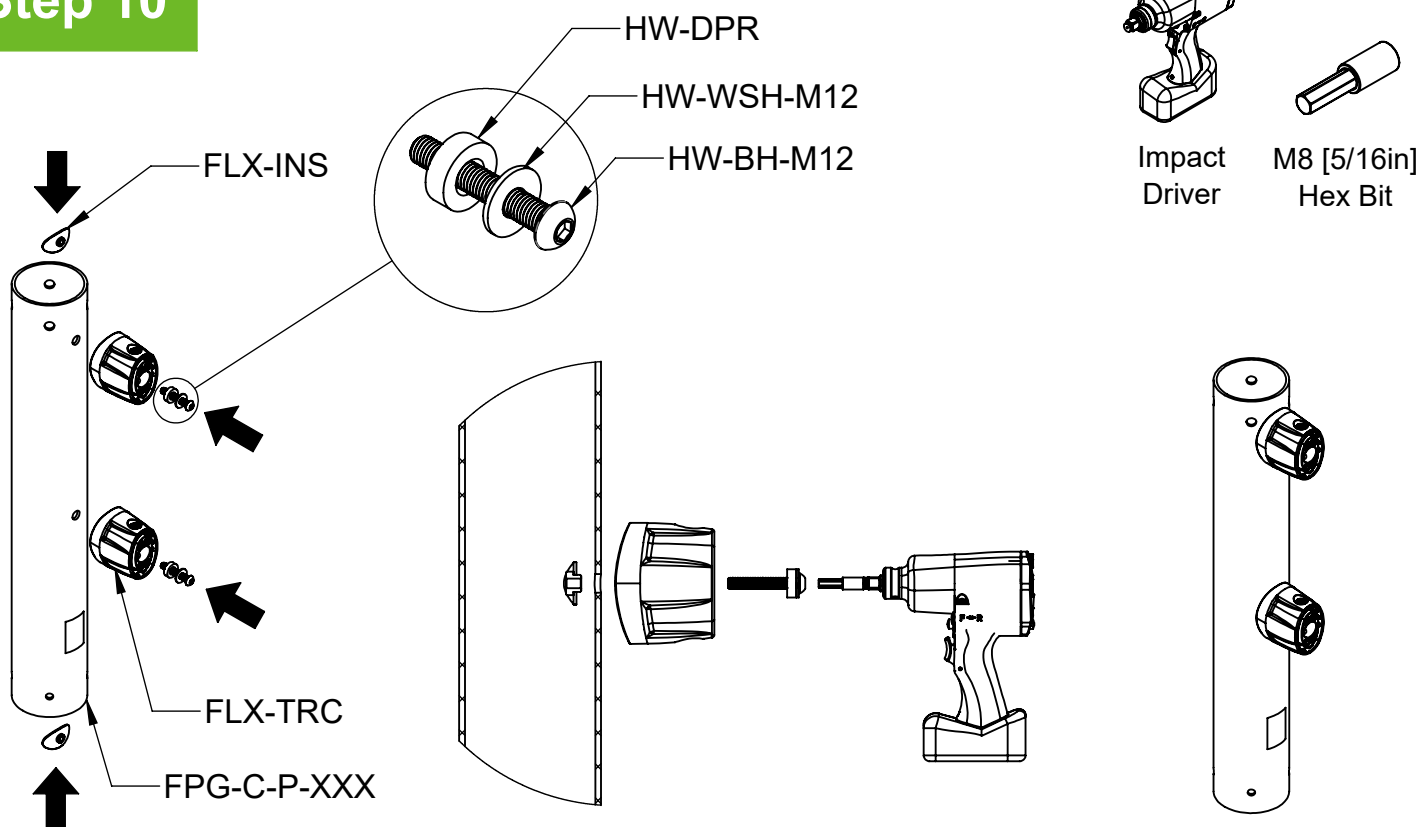


ANCHOR DETAIL

## Step 9

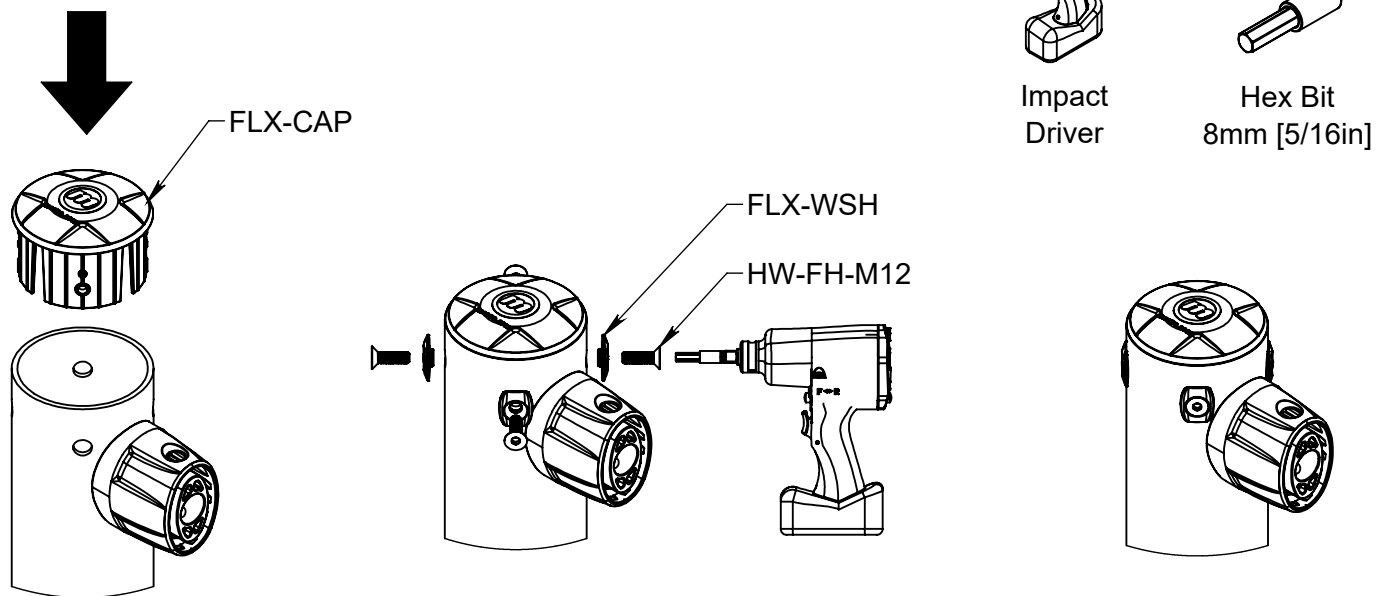


## Step 10



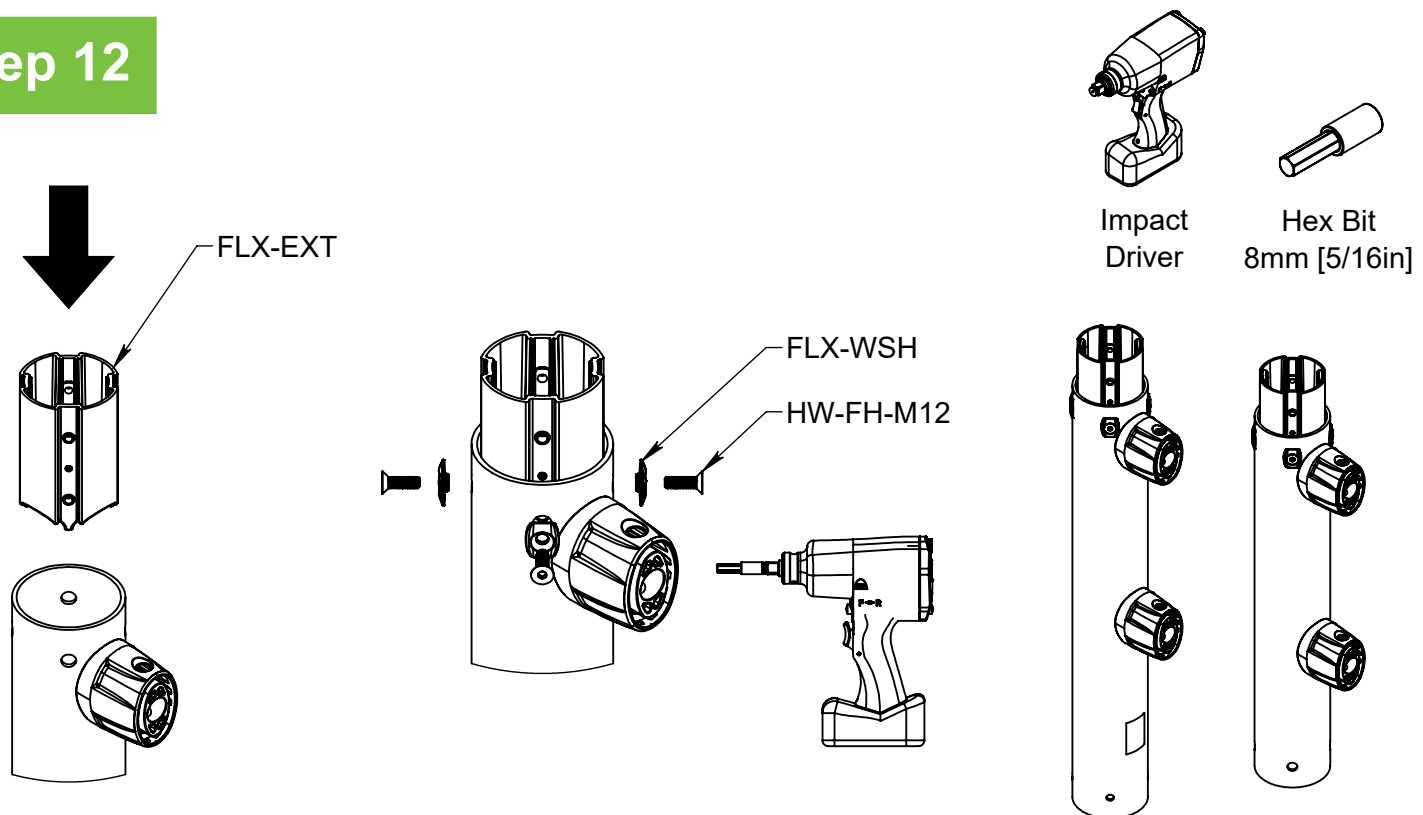
**REPEAT FOR ALL POSTS**

## Step 11



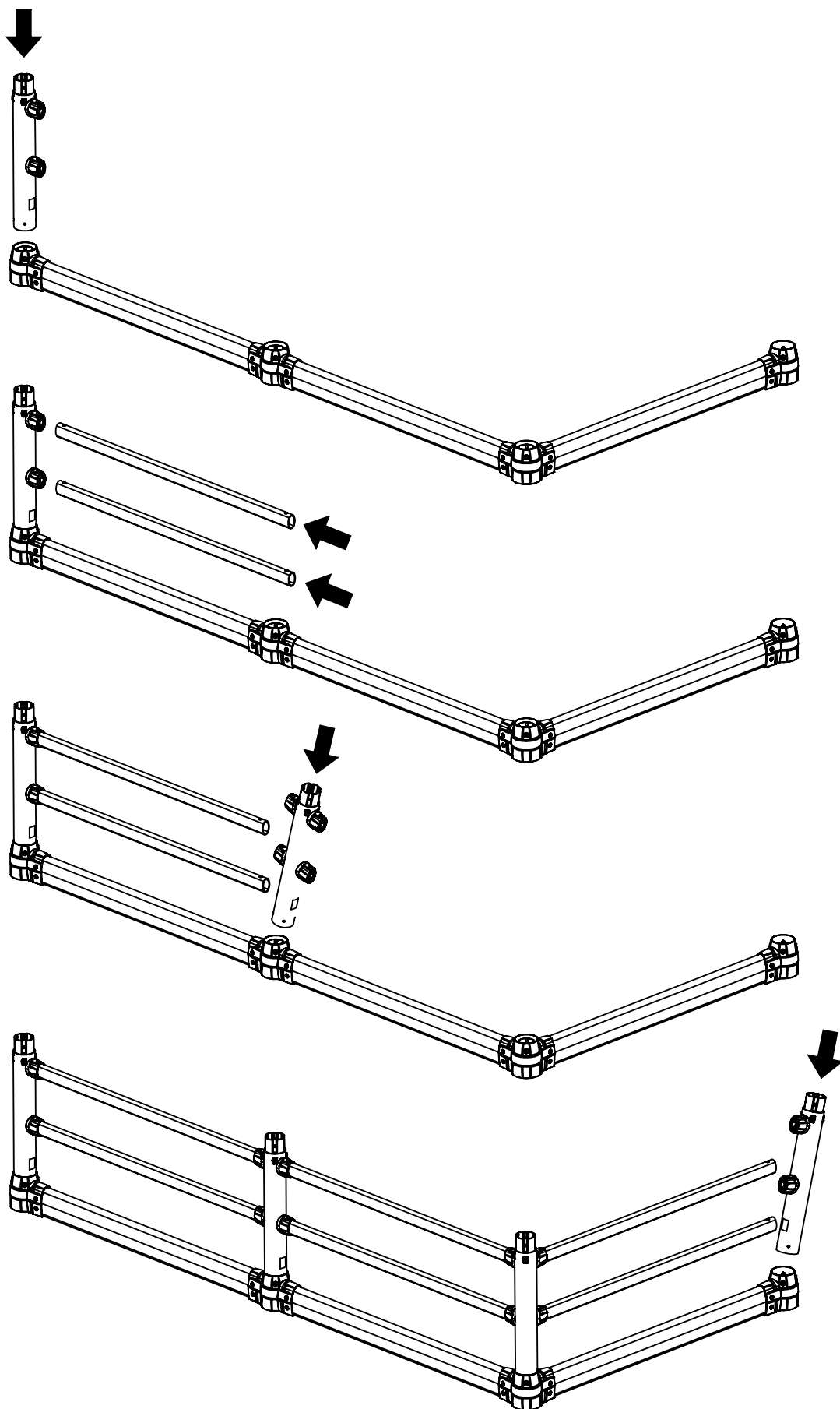
**REPEAT FOR 1 TOPPLE POST PER KIT**

## Step 12



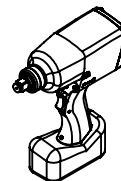
**REPEAT FOR 1 PEDESTRIAN POST  
AND 1 TOPPLE POST PER KIT**

## Step 13





## Step 14



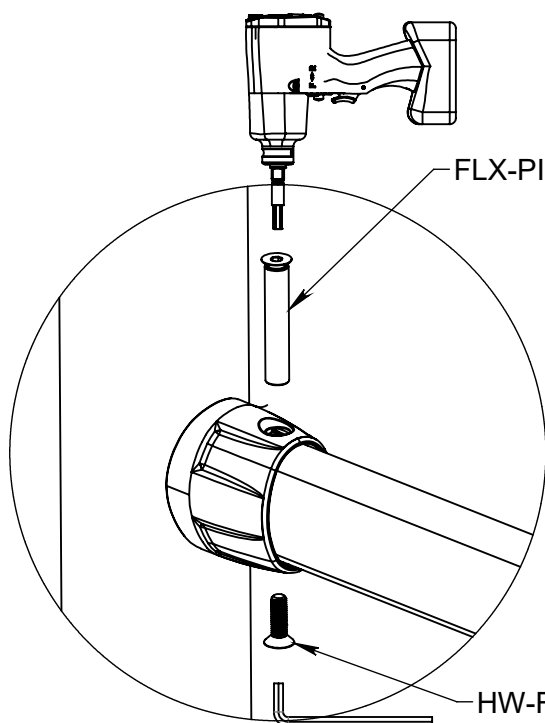
Impact  
Driver



Hex Key  
8mm [5/16in]

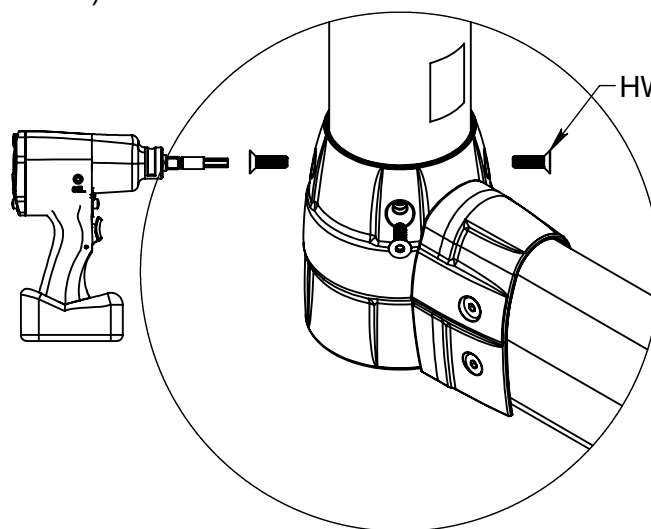


Hex Bit  
8mm [5/16in]

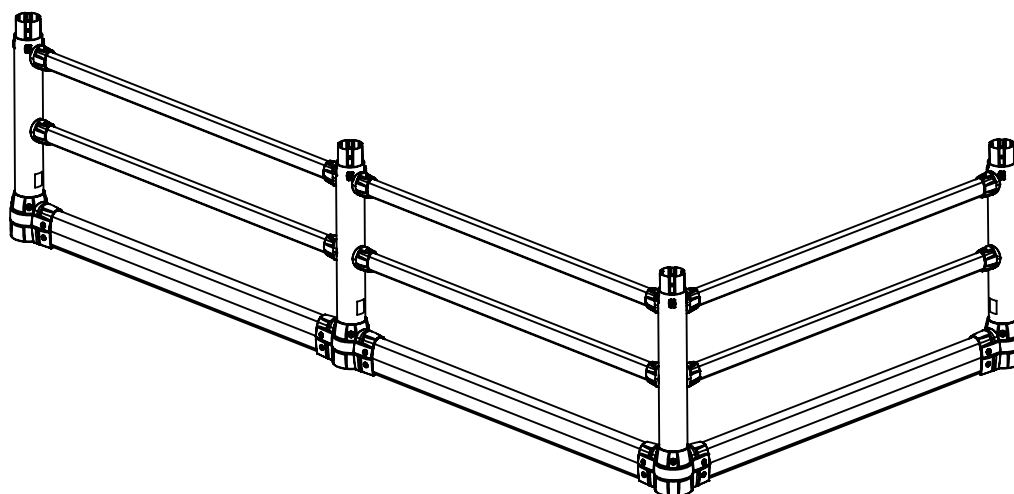


FLX-PIN-100 (BLACK)

HW-FH-M12



HW-FH-M12

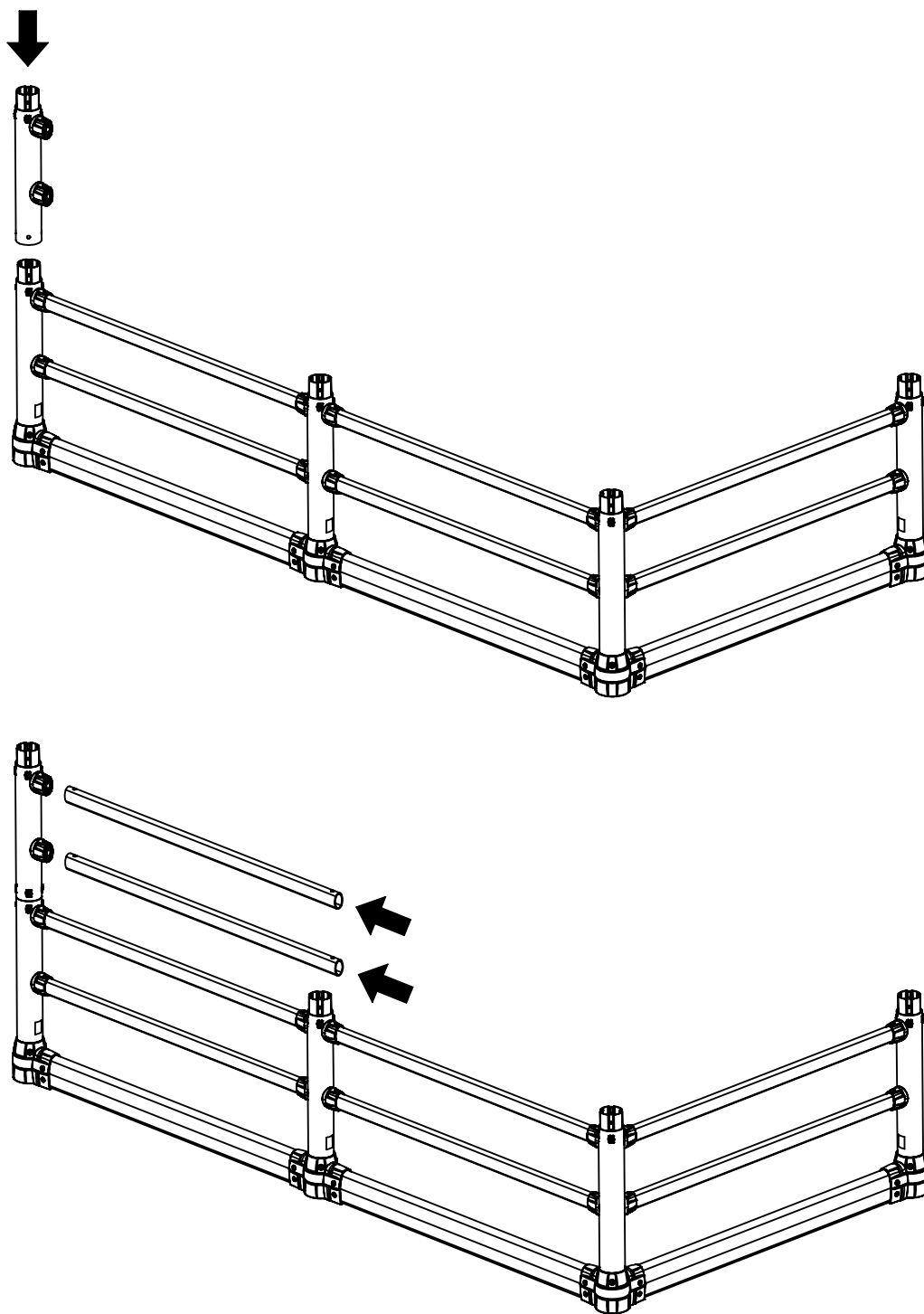


**Repeat for all Posts and Rails**

## Step 15



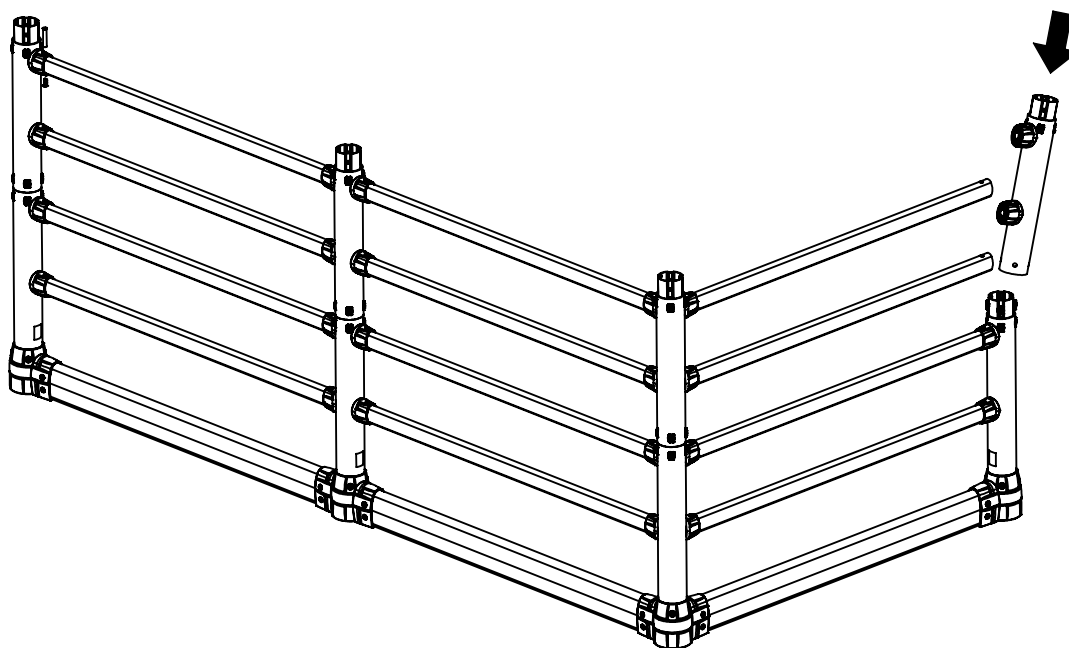
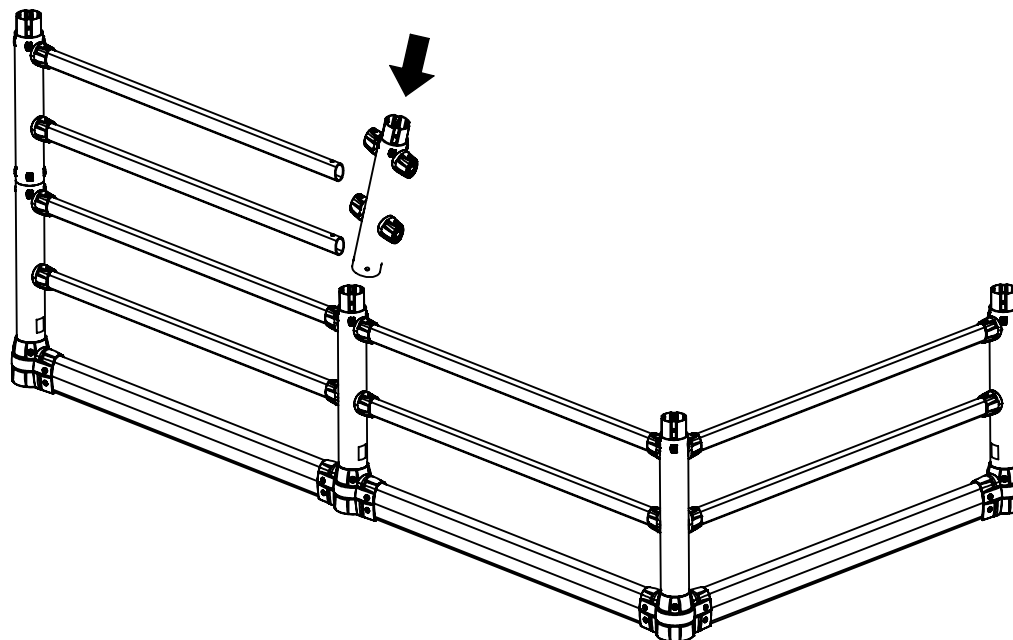
Step Ladder



## Step 15 (cont.)



Step Ladder



## Step 16



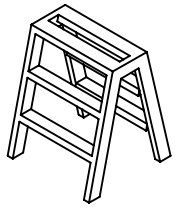
Impact  
Driver



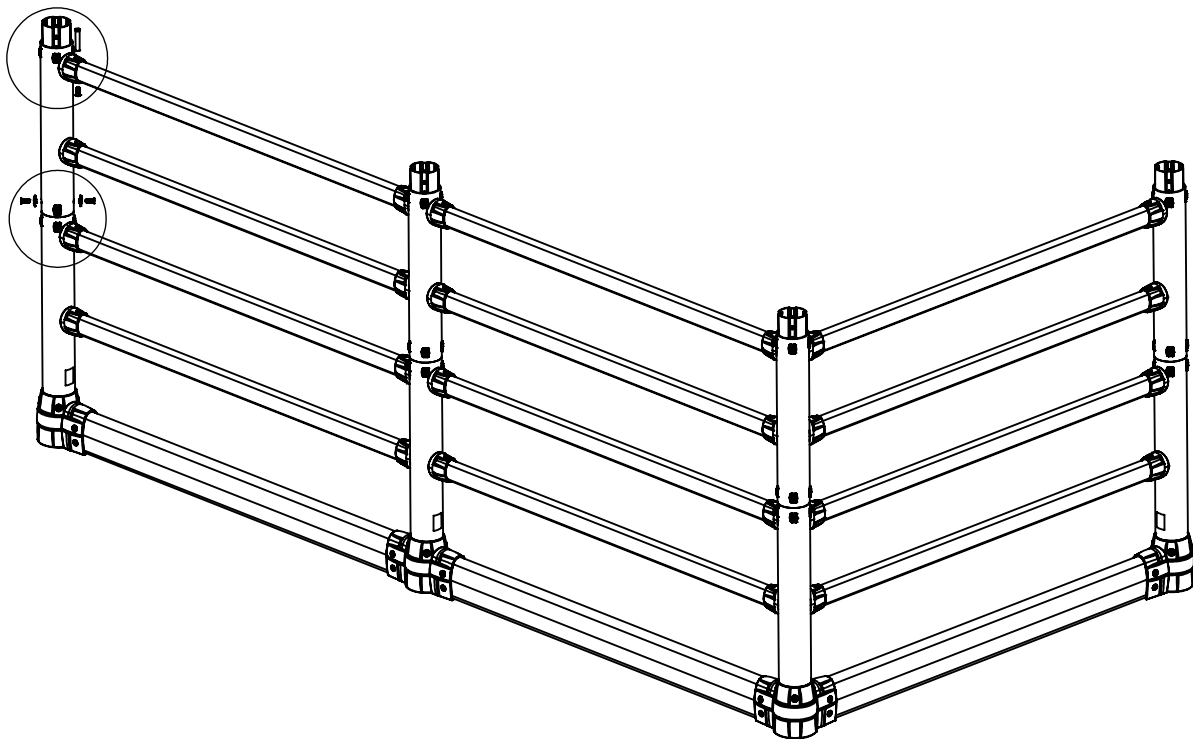
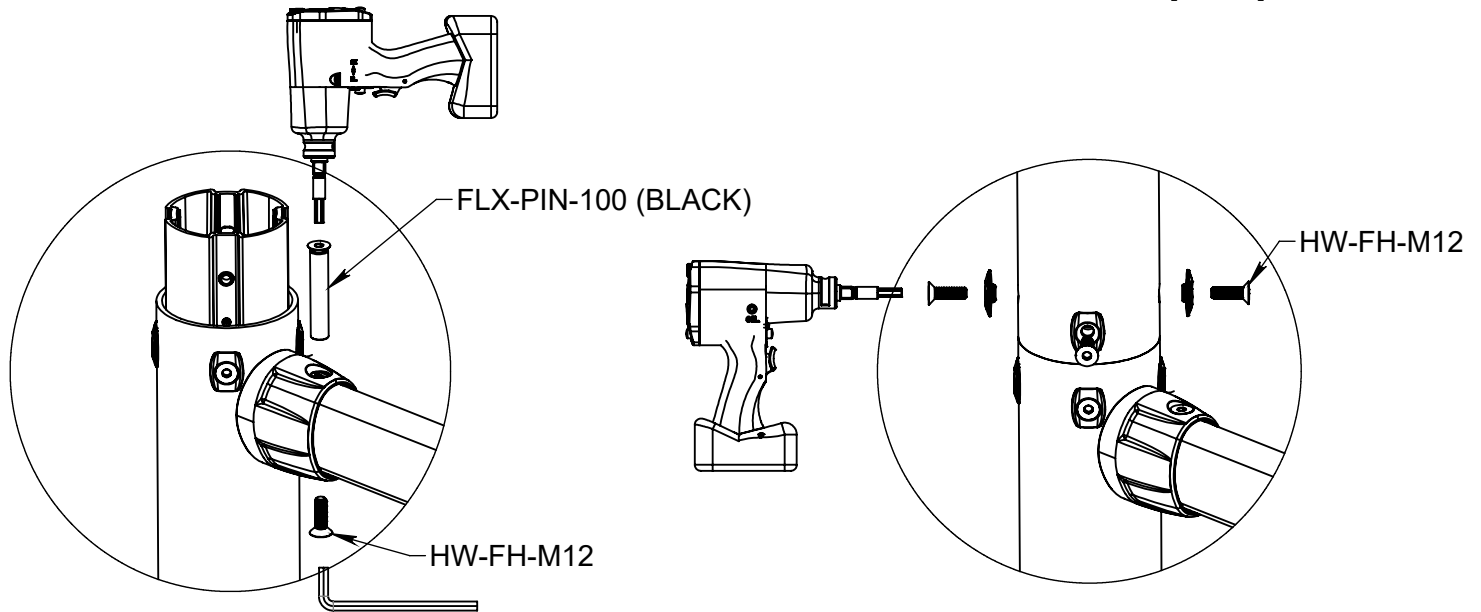
Hex Key  
8mm [5/16in]



Hex Bit  
8mm [5/16in]

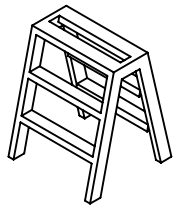


Step Ladder

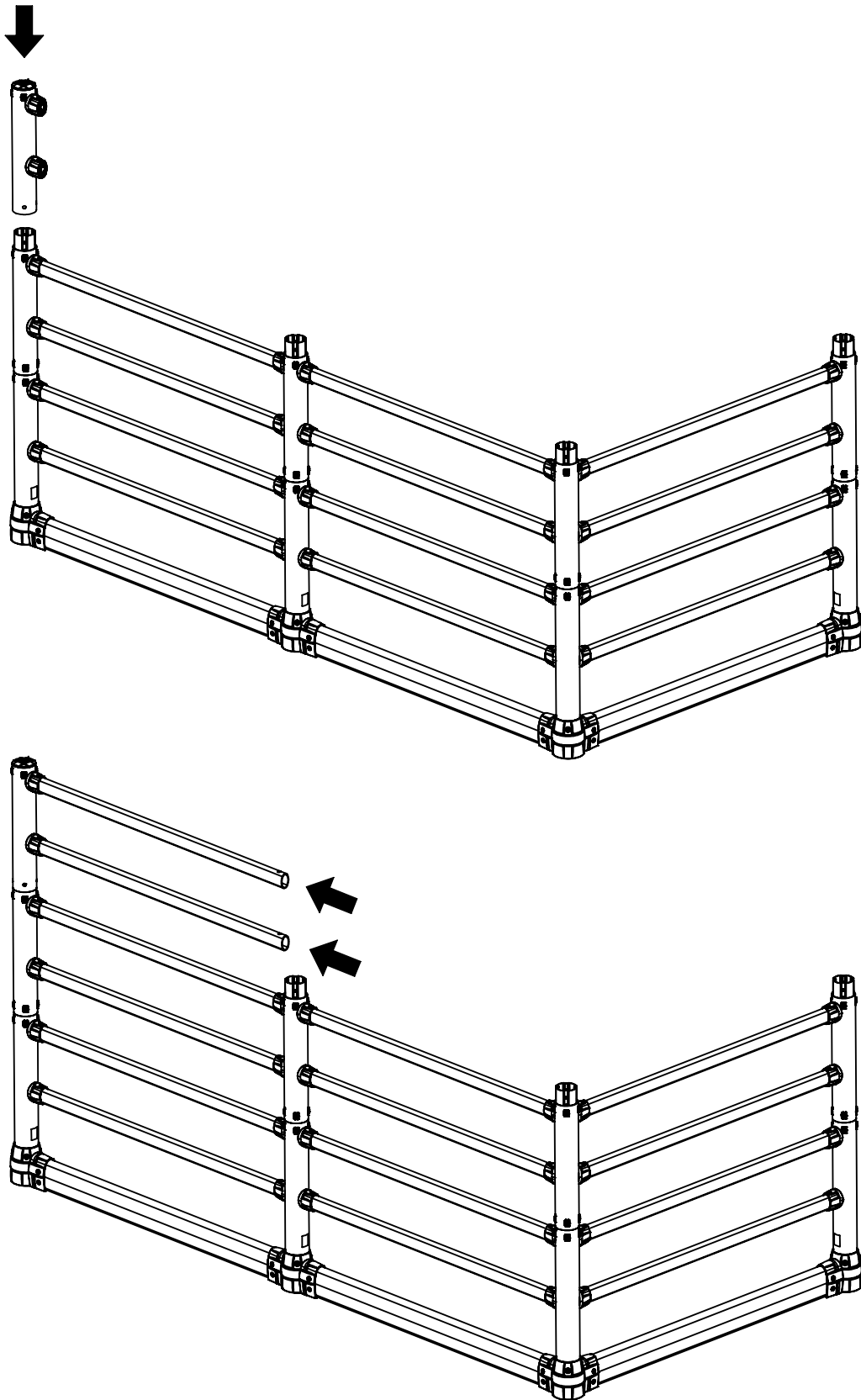


**REPEAT FOR ALL POSTS AND RAILS**

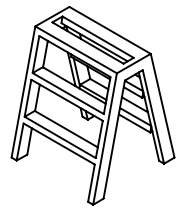
## Step 17



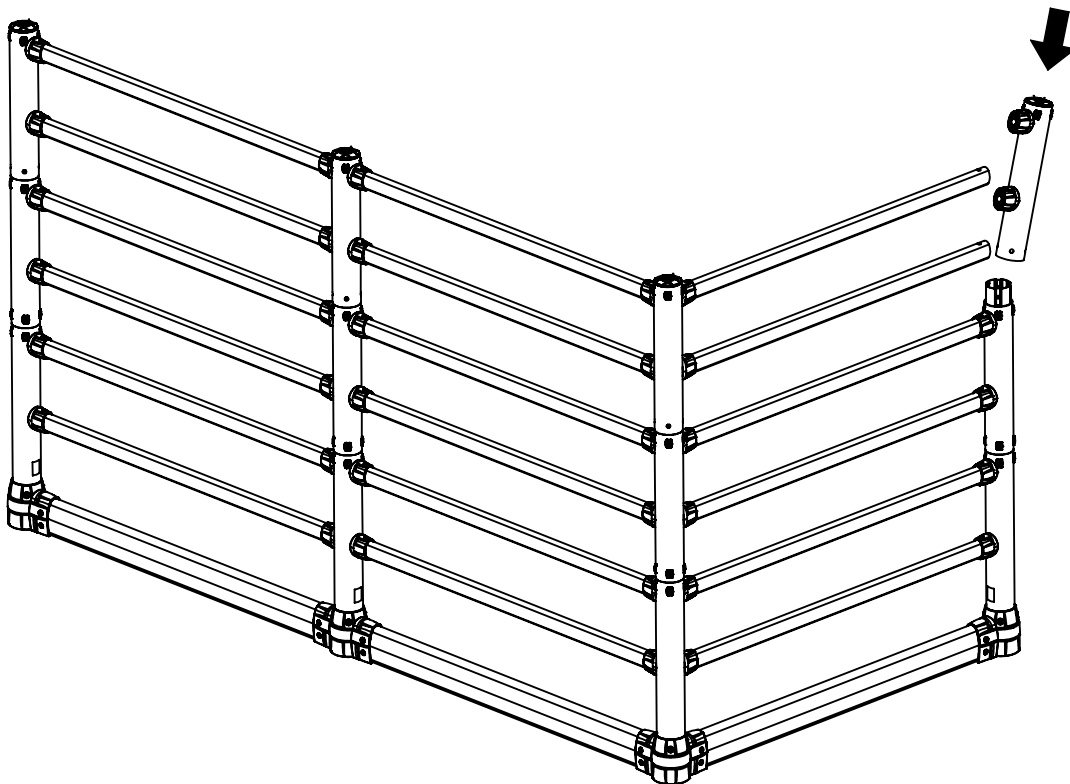
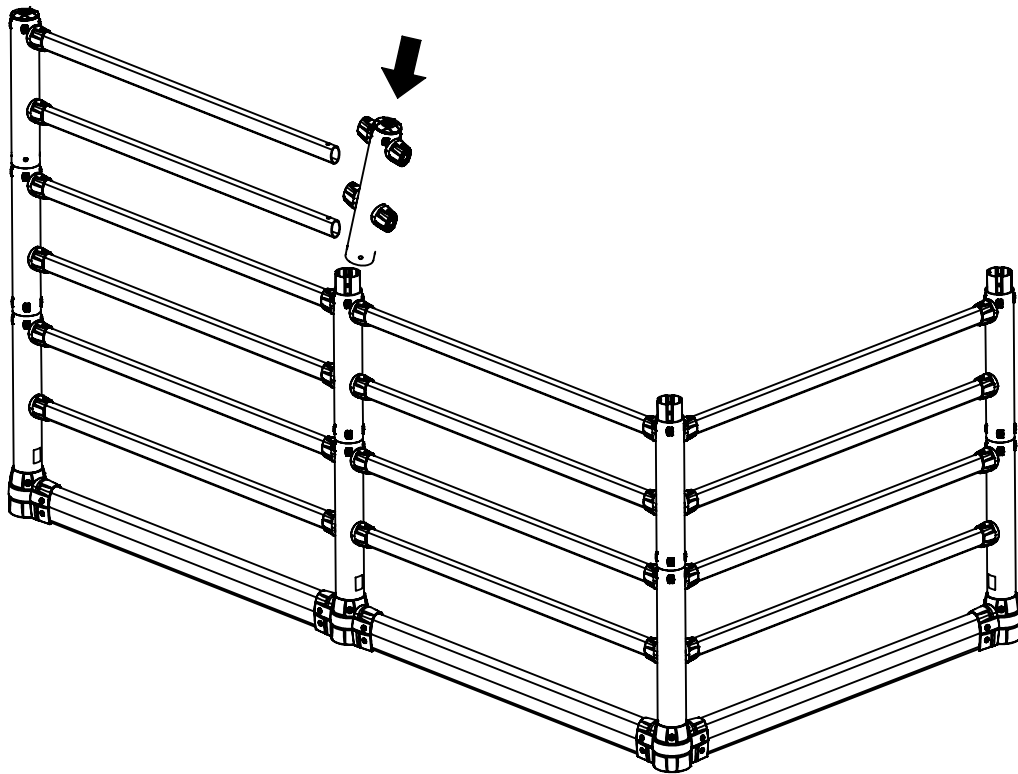
Step Ladder



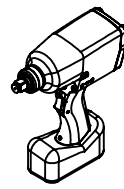
## Step 17 (cont.)



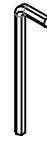
Step Ladder



## Step 18



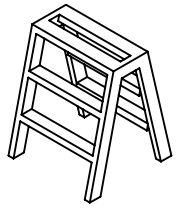
Impact  
Driver



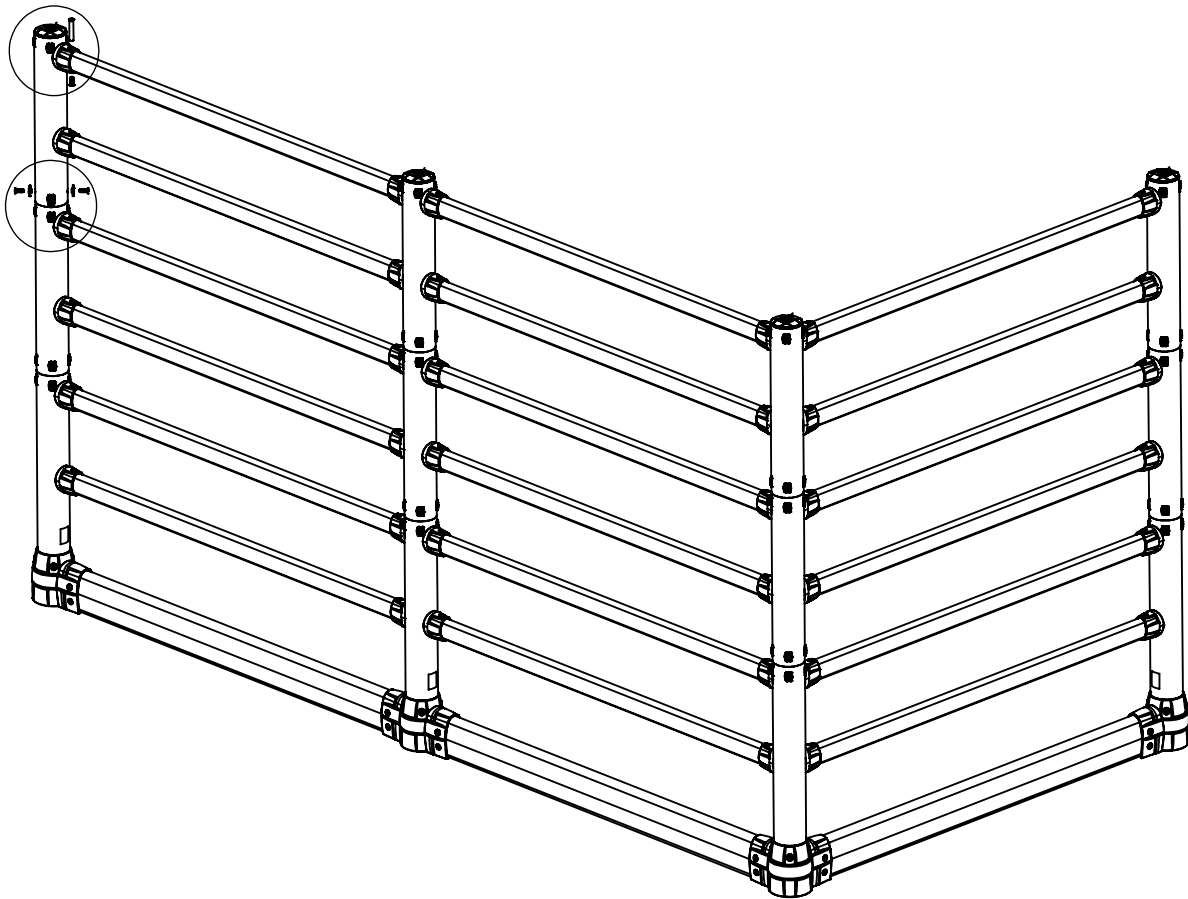
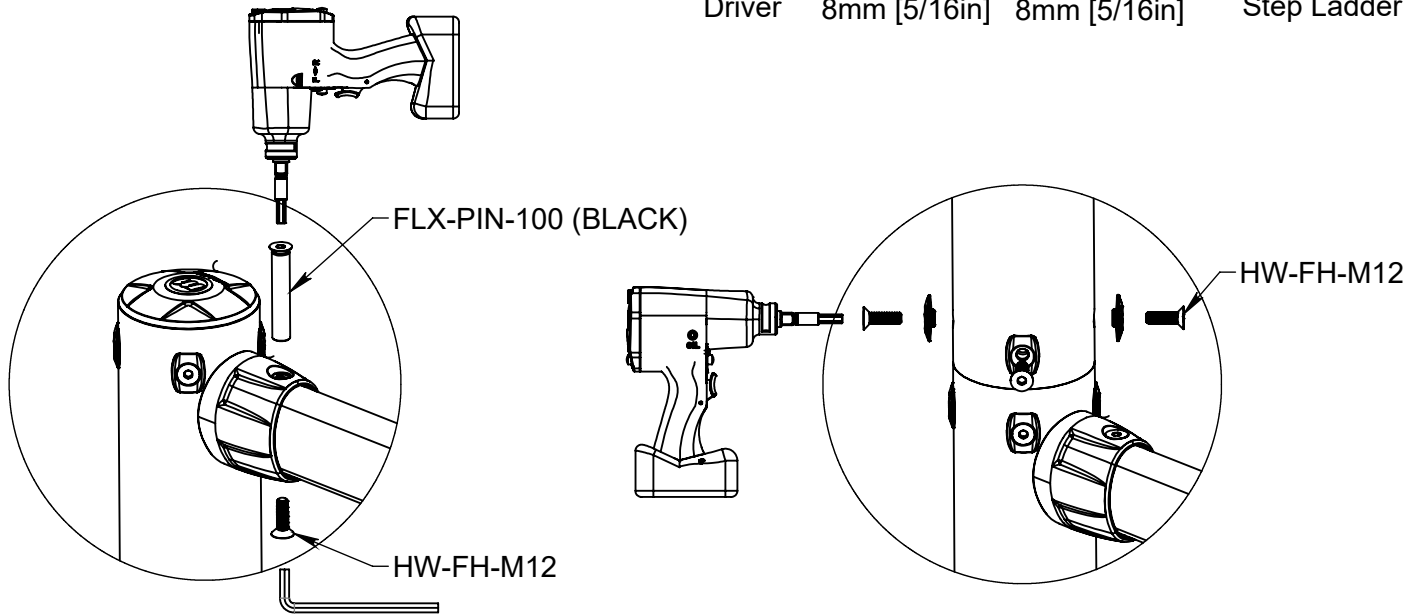
Hex Key  
8mm [5/16in]



Hex Bit  
8mm [5/16in]



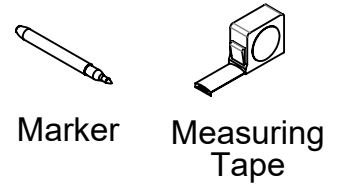
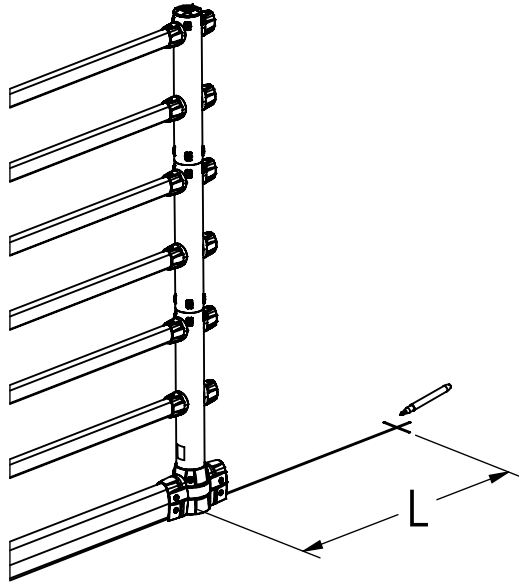
Step Ladder



**REPEAT FOR ALL POSTS AND RAILS**

## Appendix A: Custom Length Rails

### Step A1

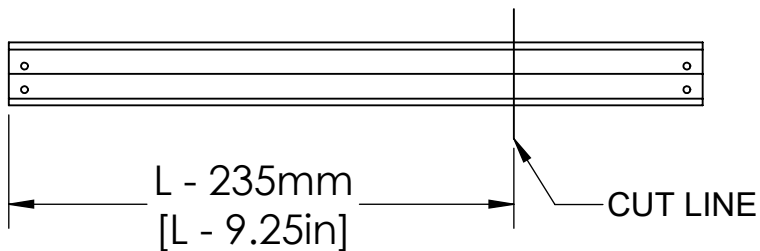


Marker

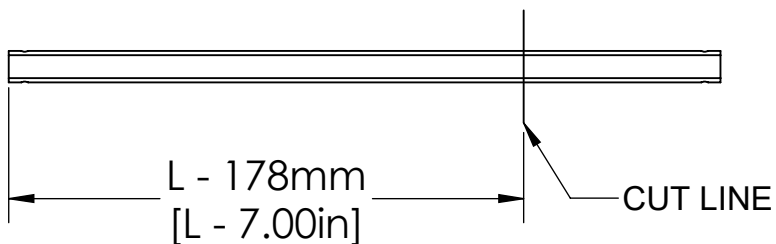
Measuring  
Tape

### Step A2

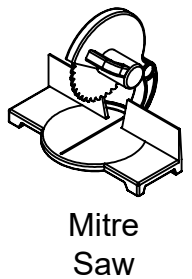
#### Ground Guard Rail FGG-C-R-8



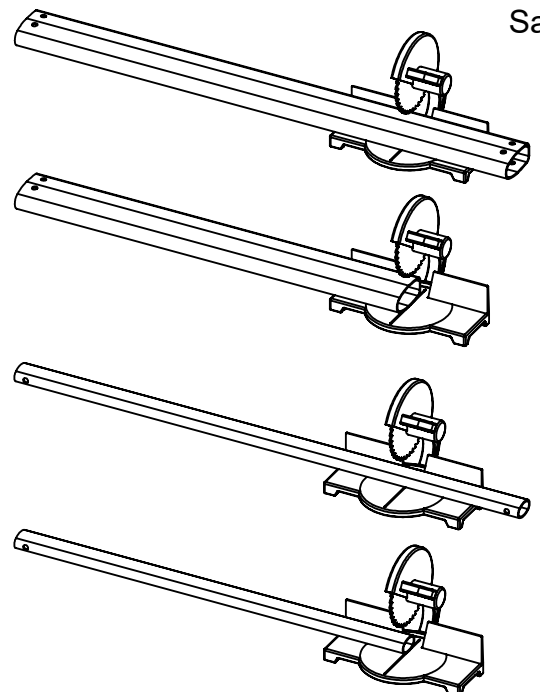
#### Top Rail FTR-C-R-8



Measuring  
Tape

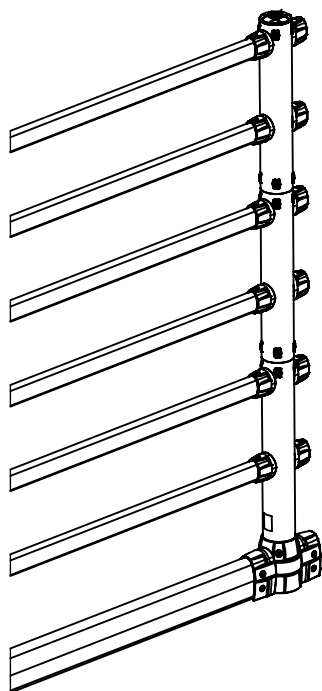


Mitre  
Saw





## Step A3



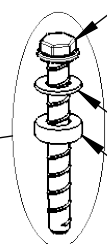
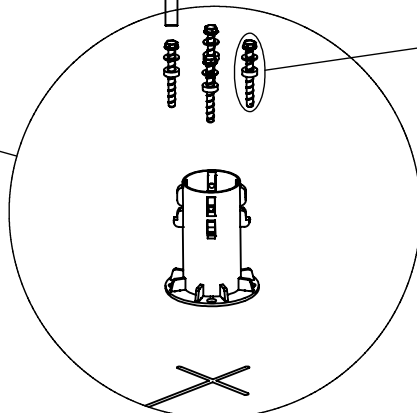
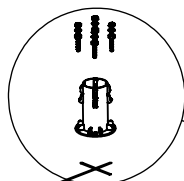
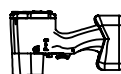
Impact  
Driver



Socket  
Extender



Hex Socket  
17mm [3/4in]

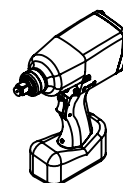
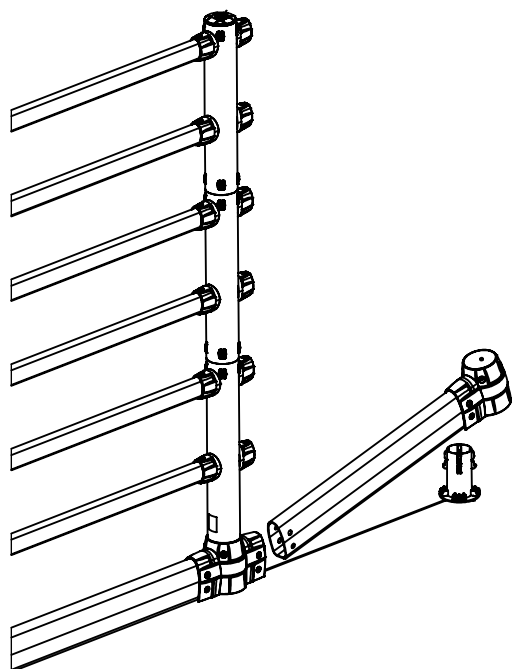


HW-C-A1250 or  
HW-C-AM12-130

HW-WSH-ANC

HW-DPR

## Step A4



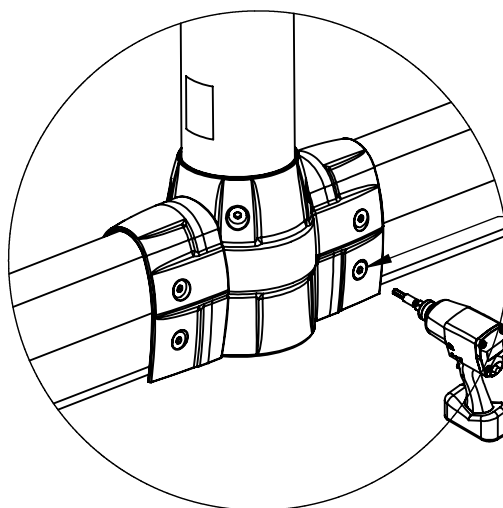
Impact  
Driver



Hex Key  
8mm [5/16in]



Hex Bit  
8mm [5/16in]

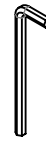


FLX-PIN-100 (BLACK)  
HW-FH-M12

## Step A5



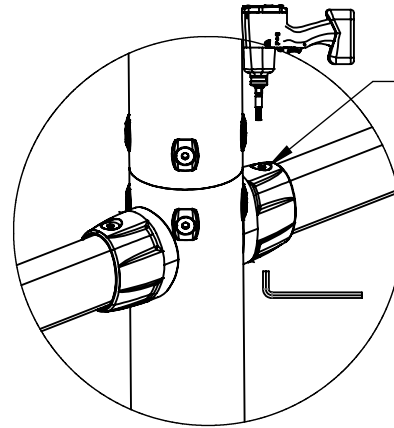
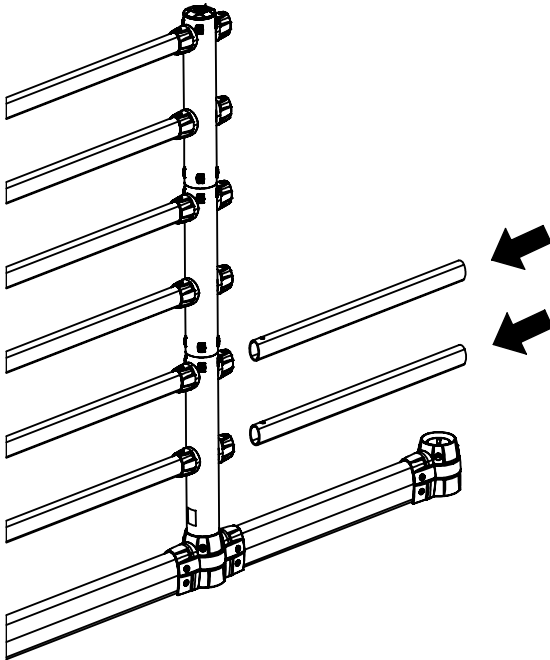
Impact  
Driver



Hex Key  
8mm [5/16in]



Hex Bit  
8mm [5/16in]



FLX-PIN-100 (BLACK)  
HW-FH-M12

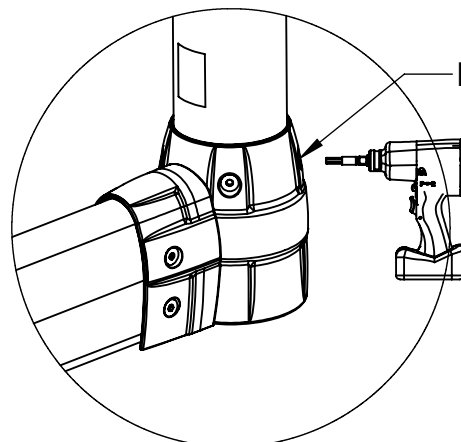
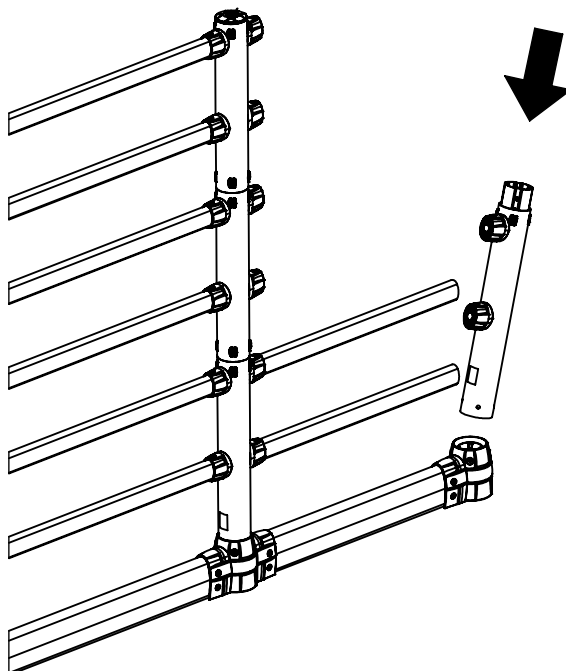
## Step A6



Impact  
Driver

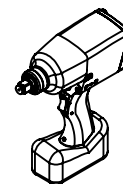


Hex Bit  
8mm [5/16in]



HW-FH-M12

## Step A7



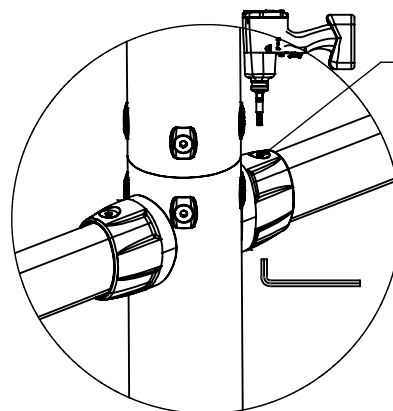
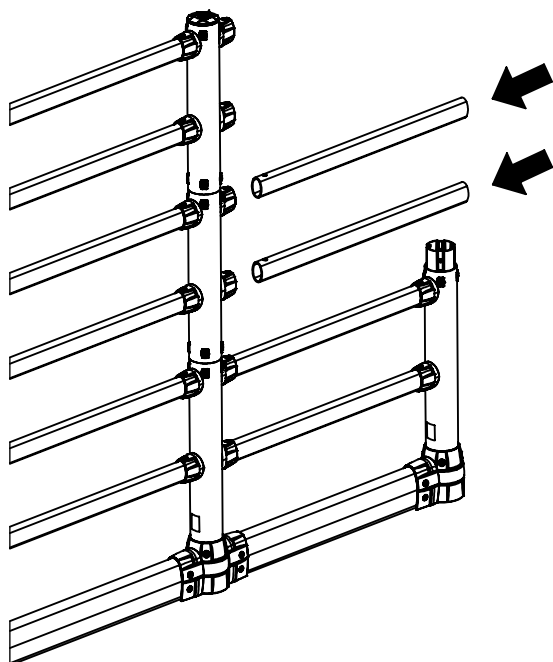
Impact  
Driver



Hex Key  
8mm [5/16in]

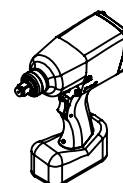


Hex Bit  
8mm [5/16in]



FLX-PIN-100 (BLACK)  
HW-FH-M12

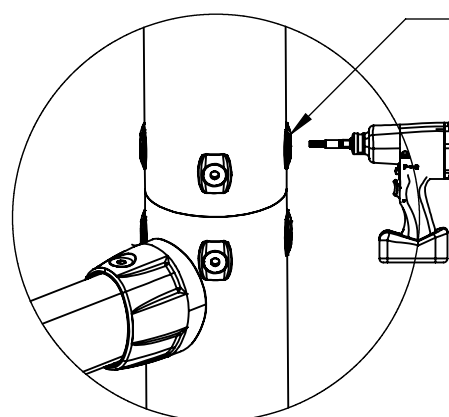
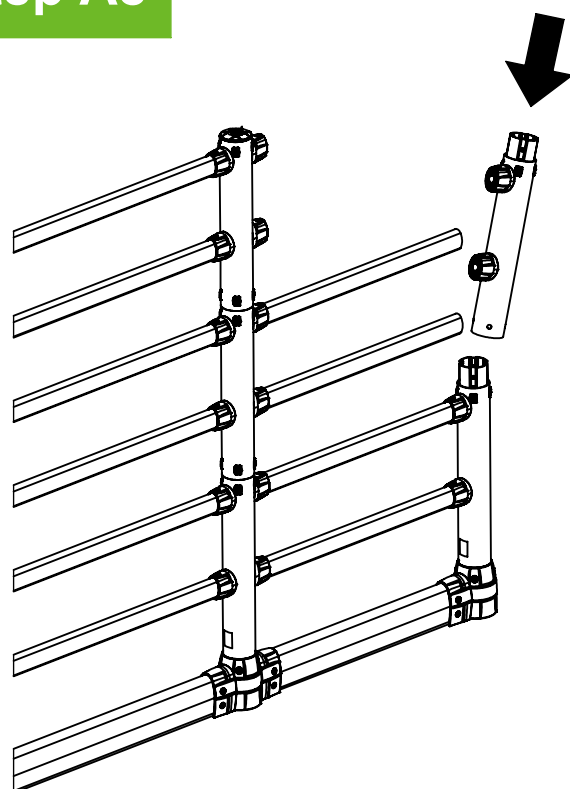
## Step A8



Impact  
Driver

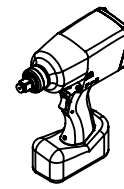
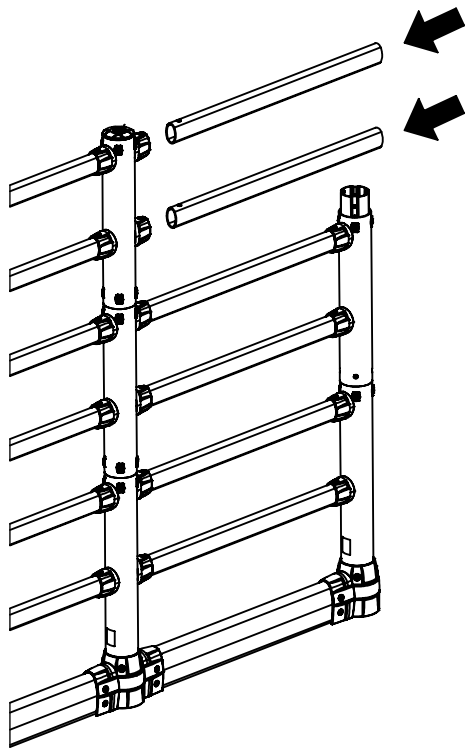


Hex Bit  
8mm [5/16in]



FLX-WSH  
HW-FH-M12

## Step A9



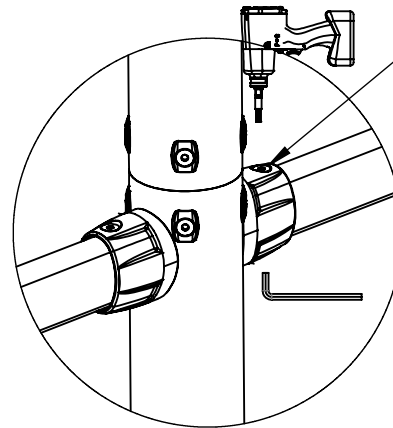
Impact  
Driver



Hex Key  
8mm [5/16in]

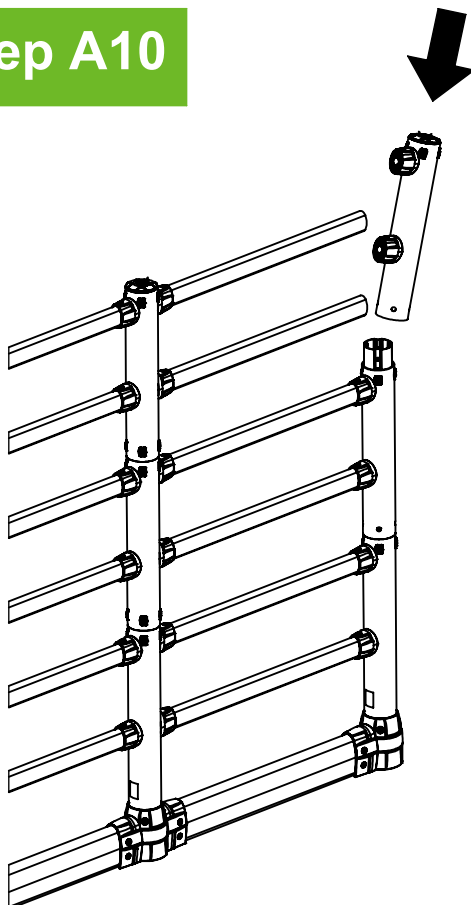


Hex Bit  
8mm [5/16in]



FLX-PIN-100 (BLACK)  
HW-FH-M12

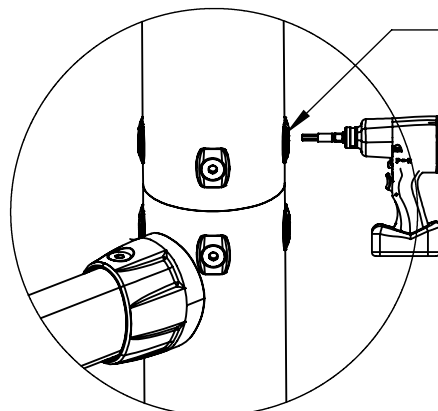
## Step A10



Impact  
Driver

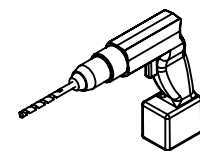
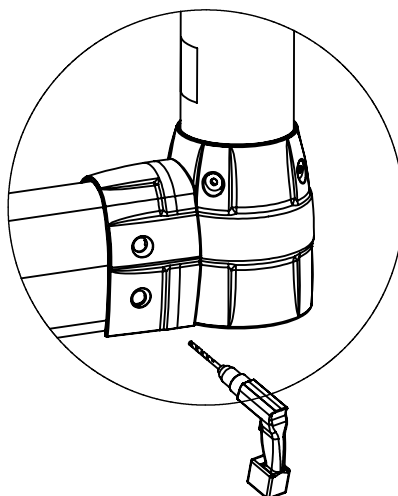
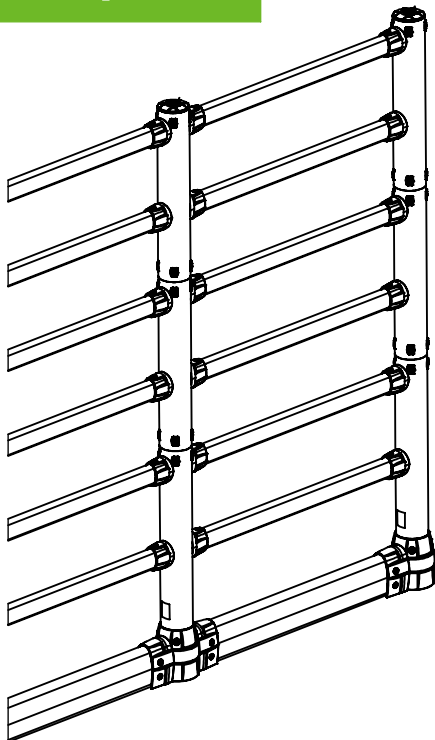


Hex Bit  
8mm [5/16in]

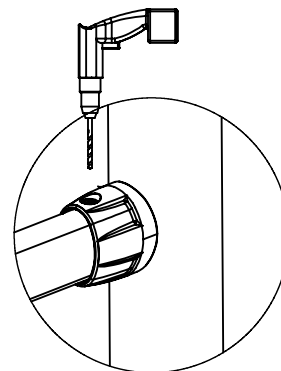


FLX-WSH  
HW-FH-M12

## Step A11

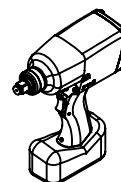
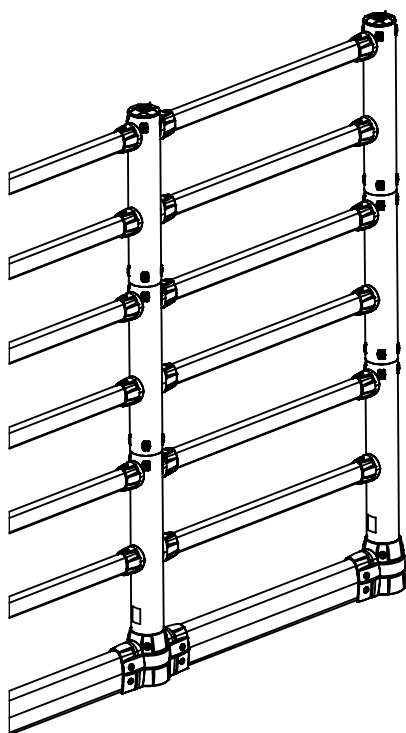


Drill with  
20mm [3/4in] Bit



**REPEAT AS NEEDED**

## Step A12



Impact  
Driver

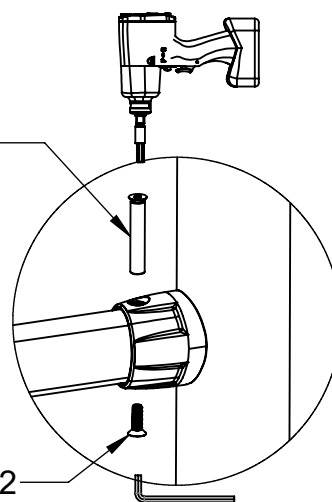


Hex Key  
8mm [5/16in]



Hex Bit  
8mm [5/16in]

FLX-PIN-100 (BLACK)



HW-FH-M12

**REPEAT FOR ALL REMAINING RAIL CONNECTORS**

## Installation Complete

