



STEELPOST 4

**THE GLOBAL STANDARD
FOR INDUSTRIAL SAFETY
BARRIER INNOVATION**

*Easy to Install and Move —
it's our Bolt-Down Bollard*

THE MCCUE DIFFERENCE

HI, WE'RE MCCUE & WE MAKE SAFETY EASY!

Our innovative, impact-tested barriers safely stop fast-moving material handling vehicles — protecting your people and your facility. With engineered materials that work together, we're revolutionizing safety barrier innovation with these three principles:



STEEL STRENGTH

Stop bumps and hits from your machinery — keeping your facility safer.



HIGH VISIBILITY

Bright and easy to spot, SteelPost's high vis design makes traffic flow easy.



EASY INSTALL

Simple install with standard hardware and tools.

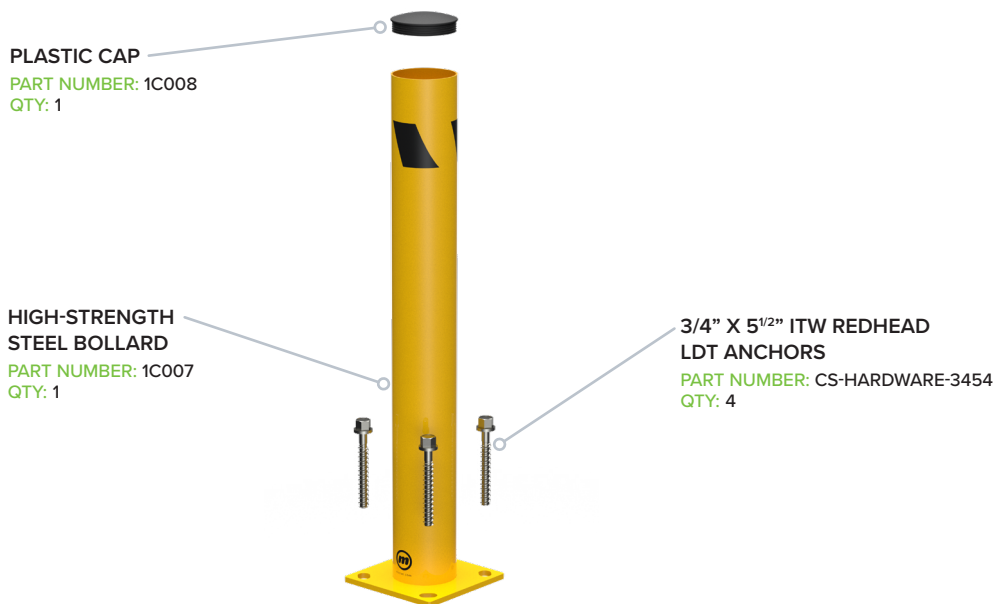
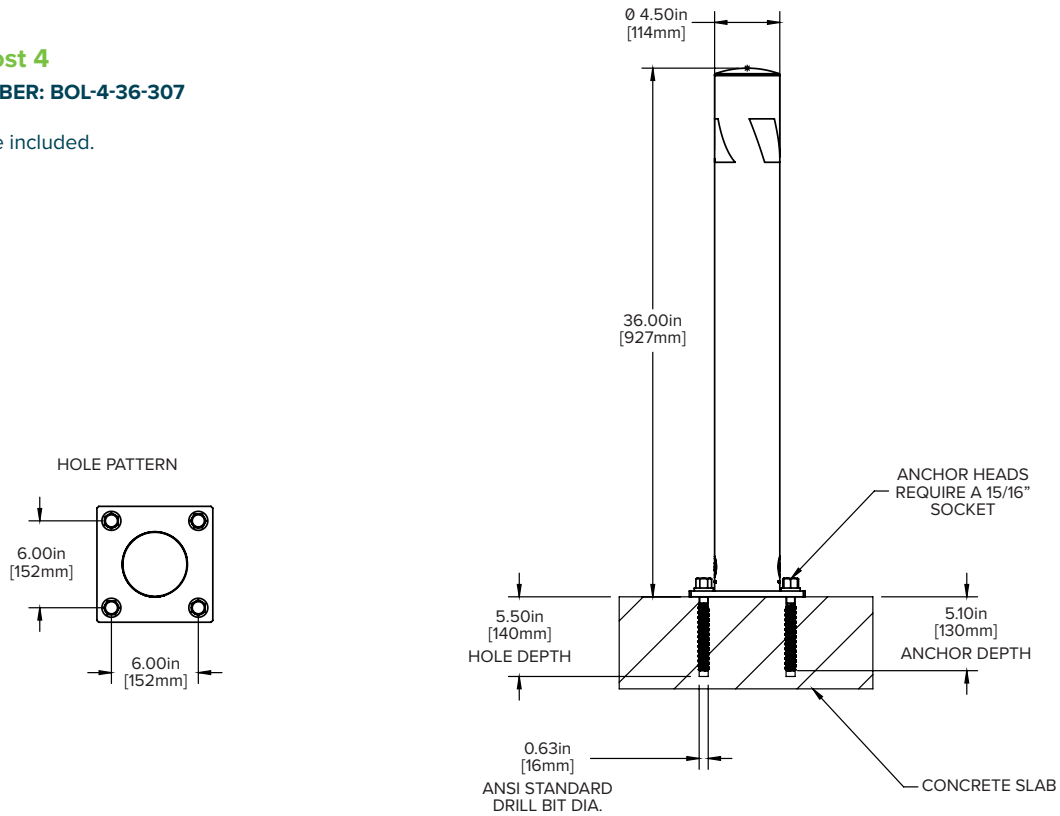
**KEEP YOUR OPERATIONS SAFE AND YOUR WORKFORCE SAFER WITH THE WORLD'S MOST
ADVANCED SAFETY BARRIERS — SPEAK TO A SAFETY SPECIALIST TODAY (800) 800-8503**

STEELPOST 4

SteelPost 4

KIT NUMBER: BOL-4-36-307

Hardware included.



PLASTIC CAP
 PART NUMBER: 1C008
 QTY: 1

HIGH-STRENGTH STEEL BOLLARD
 PART NUMBER: 1C007
 QTY: 1

3/4" X 5 1/2" ITW REDHEAD LDT ANCHORS
 PART NUMBER: CS-HARDWARE-3454
 QTY: 4