



BUMPERSIGN MOBILE

**YOUR ROLLOUT-READY
SIGNAGE SOLUTION**

Our sign is all about that base!



THE MCCUE DIFFERENCE

HI, WE'RE MCCUE AND WE HAVE THE SIGN FOR YOU!

Our design philosophy is simple, innovate with our customers every day to solve their most pressing problems. *BumperSign Mobile* was engineered with that methodology and is revolutionizing retail sign innovation with these three principals:



ENGINEERED TO LAST

We design products that thrive in retail parking lots.



EASE OF INSTALL

Add ballast, fasten top, you're done.



MODERN AESTHETICS

Extend your brand into the parking lot.

**UPGRADE THE CUSTOMER EXPERIENCE IN YOUR PARKING AREAS —
CALL US TODAY (800) 800-8503!**

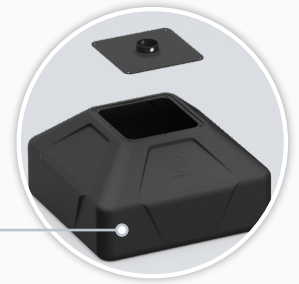


McCue



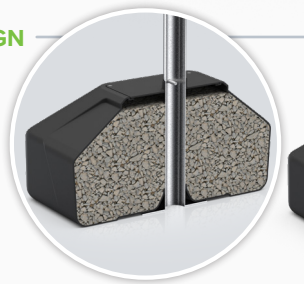
TOP NOTCH DESIGN

The molded sign topper rounds out the design, giving a clean, finished aesthetic.



EASY-TO-FILL BASE

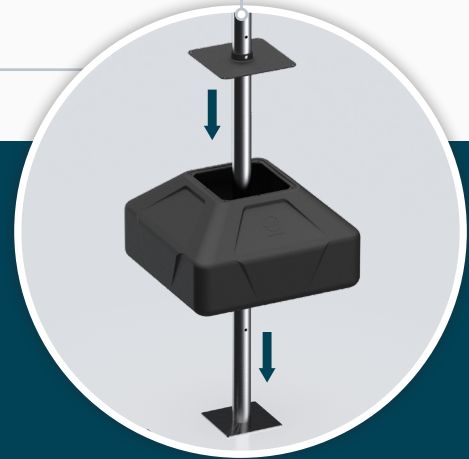
The removable cap gives plenty of room to pour entire bags of sand or stone in seconds, not minutes.



THE HEAVYWEIGHT SIGN

BumperSign Mobile's polymer sign base holds up to 250 lbs of sand, stone or gravel so it will always remain in its place.

NEW TECHNOLOGY
Patent pending removable cap combined with flanged signpost makes this the sturdiest sign in the market.



BUMPERSIGN MOBILE

Meet *BumperSign Mobile*, the first ballasted sign you'll be proud to have in front of your store! Built to last and easy to install, this parking lot sign will ensure your customers have an awesome curbside experience.

GET TO KNOW *BUMPERSIGN MOBILE*

There's more than meets the eye.



Large opening allows for quick and easy fill of 250 lbs of ballast — no funnel necessary.

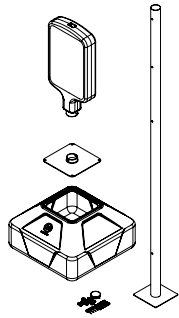


Molded polymer base is built to last and can withstand sun, snow and everything in between.



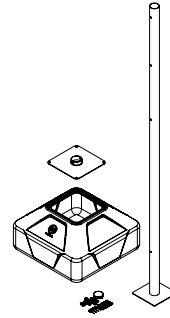
Flanged signpost adds strength and guarantees your signage is always oriented correctly.

BUMPERSIGN *MOBILE*



BUMPERSIGN MOBILE PART NUMBER: BSM-XXX

What's Included: Base, Cap, Pole, sign topper & hardware kit



BUMPERSIGN MOBILE BASIC PART NUMBER: BSM-NT-XXX

What's Included: Base, Cap, Pole & hardware kit

PLACARDS & TOPPERS



STANDARD PLACARD
Custom standard placards available, call for details.



LARGE PLACARD
Custom size placards available, call for details.

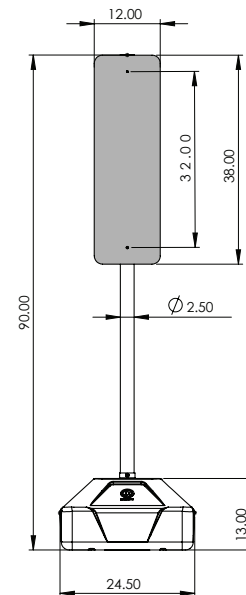
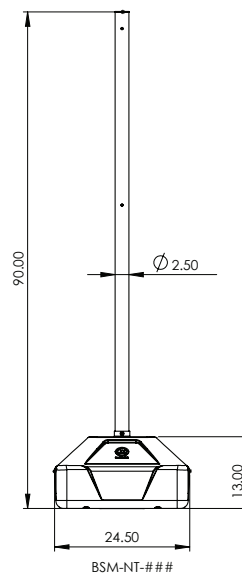
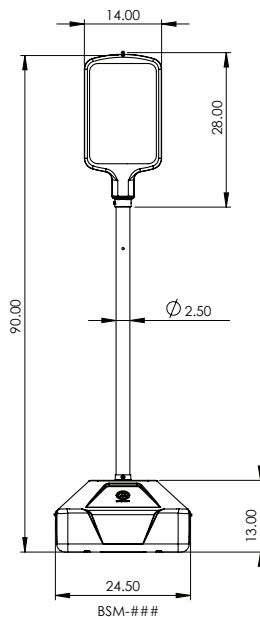


2-SIDED SIGN TOPPER
Product Number: 15AB060-###



4-SIDED SIGN TOPPER
Product Number: FCS-6-SIGN-401

TECHNICAL *SPECS*



STANDARD COLORS: Black

* PATENTS PENDING

LEAD TIME: 3 week lead time

* Signpost designed to work with polymer topper or 12" x 38" placard. Placards not included.