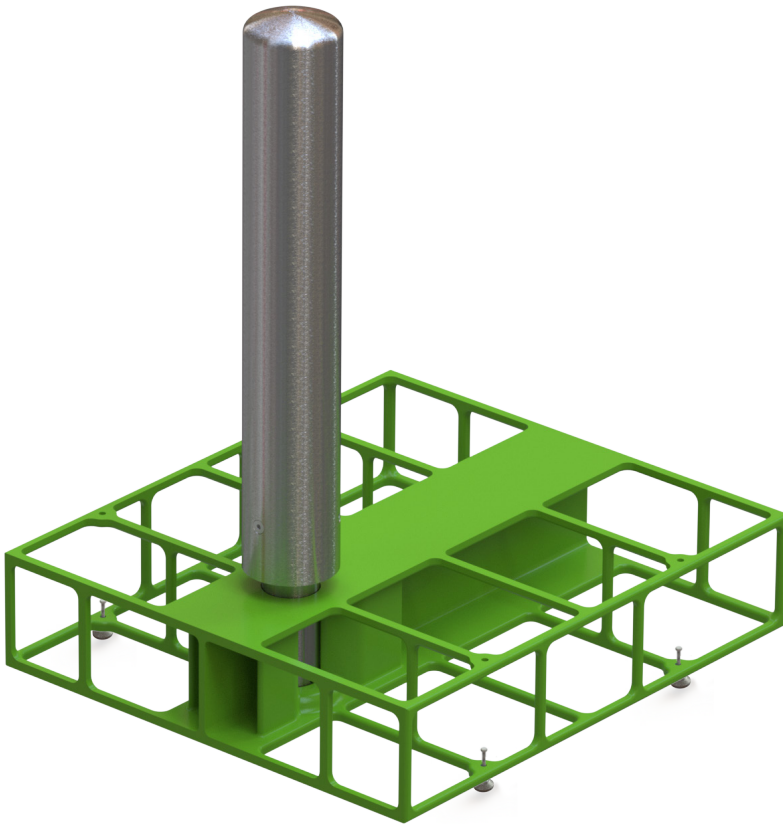
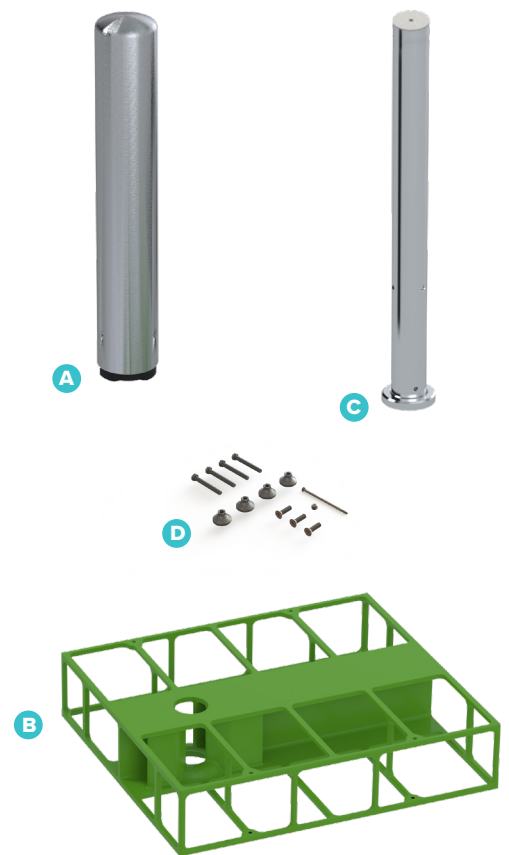


CrashCore™ Bollard

Crash-Rated Bollard Shallow Installation Instructions



COMPONENTS



	INCLUDED COMPONENTS	PRODUCT #
A	Stainless Steel Cover & Rubber Sleeve	9C003
B	S20 Shallow Cast Cage	2A001
C	S20 Shallow Steel Core	2A002
D	Shallow Mount Hardware	2A003

All purchases subject to McCue Limited Warranty & Purchase Terms,
available at www.mccue.com/support/warranty



McCue Corporation
Danvers, Massachusetts, USA
+1 (800) 800 8503
customer@mcue.com

McCue UK & Europe
Milton Keynes, United Kingdom
+44 (0)1908 365 511
uksales@mcue.com

McCue Asia
迈客(厦门)有限公司
Xiamen, Fujian, China
+86-592-2200790

mccue.com



Suggested Tool List

Below you will find the suggested tools for a shallow cage CrashCore Bollard installation

EQUIPMENT

- Skid Steer Forks & Bucket Attachments
- Concrete Masonry Saw With Diamond Blade
- Gas-Powered Generator
- Wet/Dry Vacuum
- Pressure Washer
- Portable Work Lights (If Night Work)
- Cordless Blower
- Cordless Impact Driver
- Dumpster

HARDWARE & SUPPLIES

- Concrete with Minimum 3000 psi
- 3/16" Carbide Tip Masonry Drill Bit
- 5/16" Hex Impact Socket
- 5/16" Allen Key or Hex Bit
- Towels or Rags for Clean Stainless Steel
- Stainless Steel-Safe Cleaner

TOOLS

- Chalk for Marking Concrete
- Chalk Line or Laser
- Tape Measure
- 24" Push Broom
- 7" Corn Hand Broom
- Finishing Trowel
- Flat Transfer Shovel
- Round Point Shovel
- Level
- Extension Cord
- 48" Post Hole Digger
- Wheelbarrow
- Web Slings for Lifting at least 1000 lb Capacity
- Square with at least 2 ft Blade
- 3/4" Water Hose with Hose Head Nozzle
- Steel Drilling Hammer or Dead Blow Hammer
- Shut-Off Valve Wrench (Water Security Key)
- 2 Adjustable Pipe Wrenches
- Utility Knife
- String or Wire
- Digging Bar
- Camera or Smart Phone

PPE

- Dust Mask
- Eye Protection
- Steel Toe Boots
- Ear Protection
- Gloves

EMERGENCY LIST

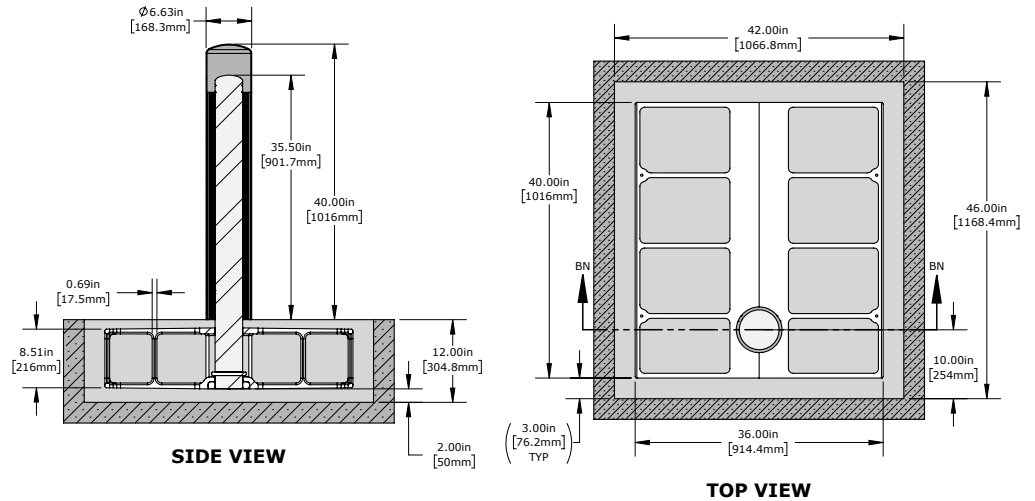
- Cones
- Cation Tape
- Metal Barricade
- Steel Tamper
- Jack Hammer
- 1/2" - 13 Tap
- 3/8" or #3 x 36" Rod or Rebar
- Masking Tape
- Tarp

GROUND CONDITIONS PER ASTM F3016

✓ **1a:** The concrete is 3000 psi minimum unconfined compressive strength, with one layer of #3 (Ø3/8") rebar spaced at 12" each way, with 1-1/4" cover at bottom. Rebar not shown here.

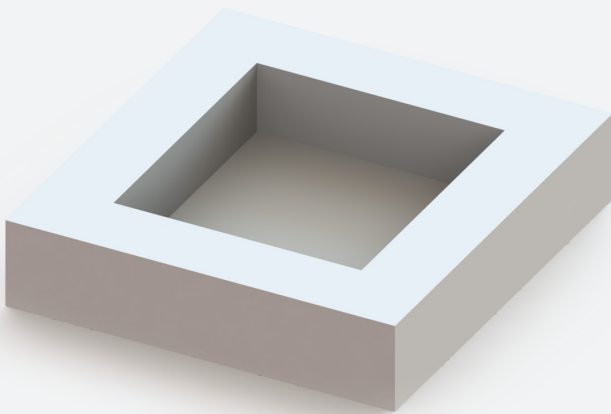
✓ **1b:** The base is Type A Grade 1 crushed limestone road base, compacted to 90% of standard proctor density.

✓ **1c:** The washed sand shall be classified as SP - poorly graded sand & be compacted to a density of not less than 90% maximum dry density in accordance with AASHTO Method of Test T099.



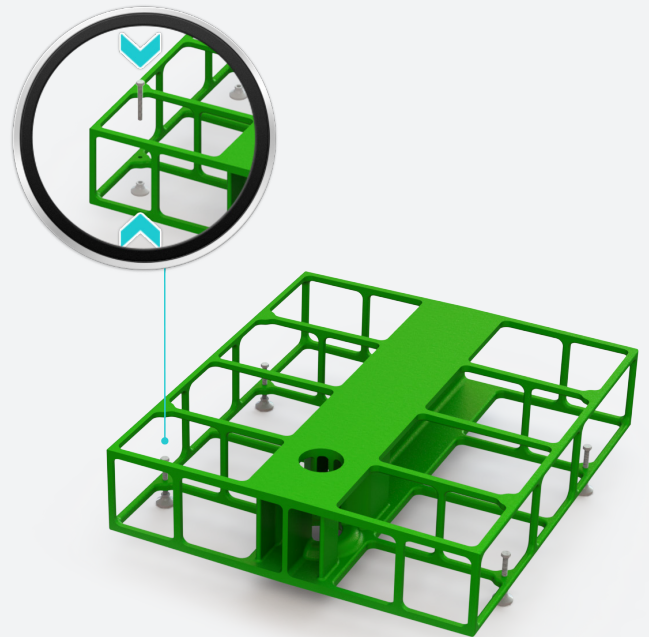
1

Using appropriate machinery, core a 42" by 46" hole, with a depth of 12".



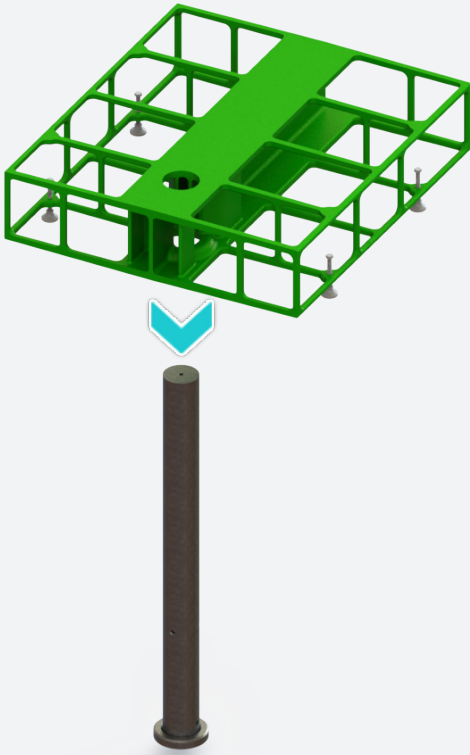
2

Preassemble leveling mount hardware.



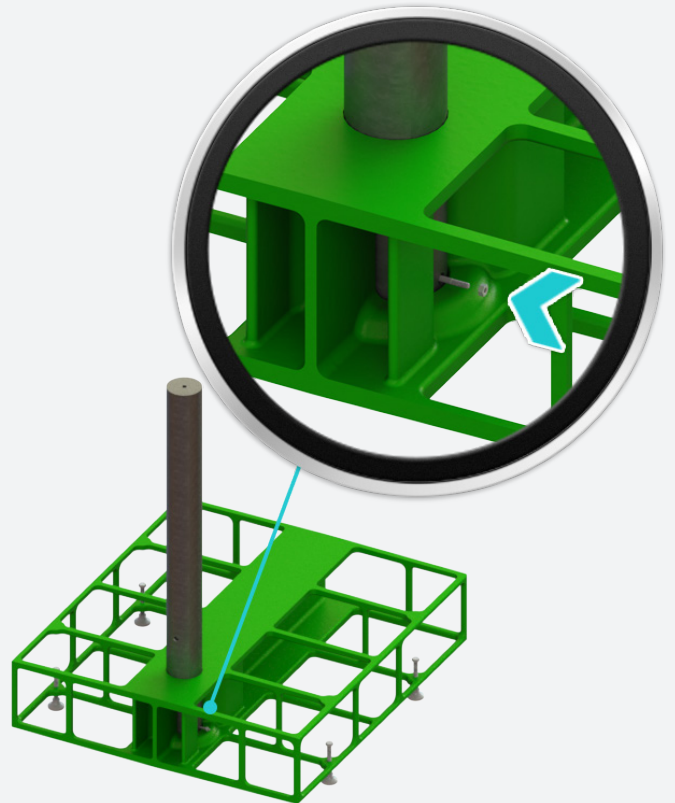
3

Insert the S20 shallow core into the cast cage.



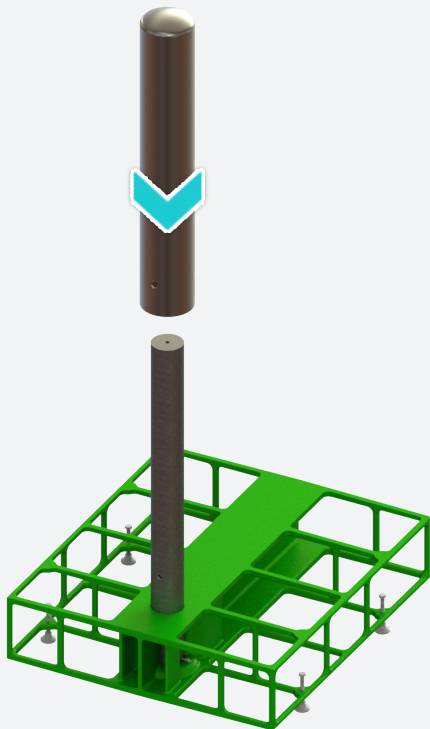
4

Secure the core to the cast cage using the 6" long bolt and nut.



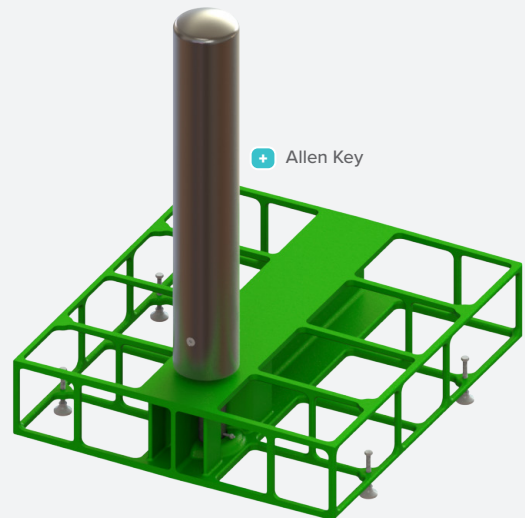
5

Install post cover. Ensure screw hole is aligned with tapped holes in the core.



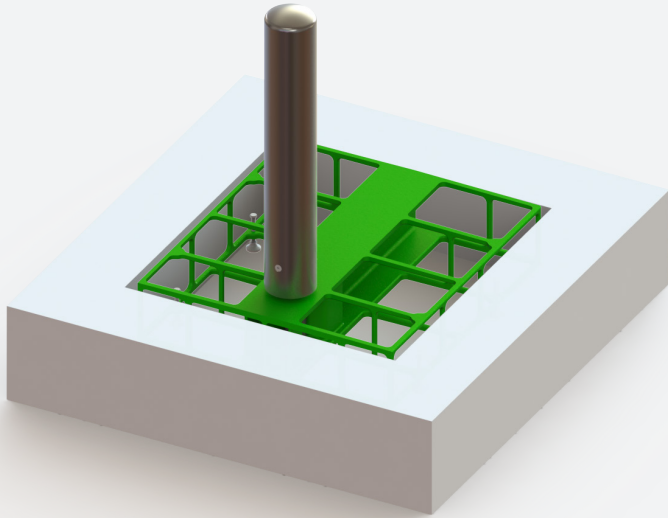
6

Use the 5/16" Allen Key to tighten the screws.



7

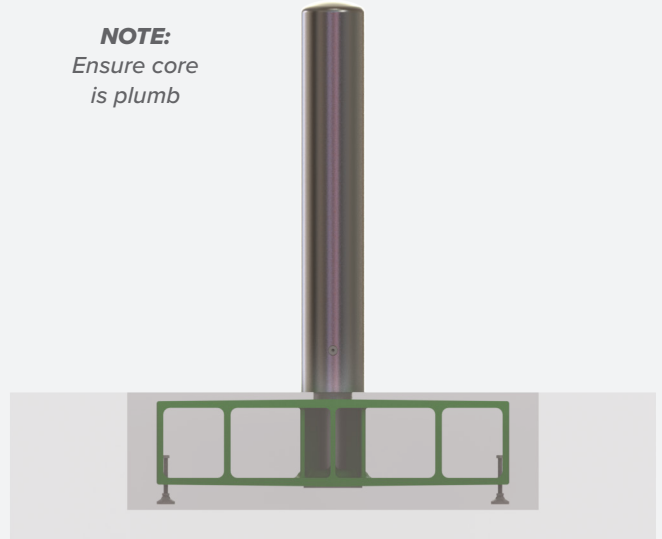
Lower the assembly in the center of the hole.



8

Use a wrench to adjust the leveling mount hardware to ensure the cage is leveled. Top of cage is 1.5" from ground level.

NOTE:
Ensure core
is plumb



9

Pour concrete up to ground level. Quality check cleanliness of cover & installation area.

NOTE:
Perform thorough
final cleanup of
job site

+ Stainless Steel Cleaner
& Power Washer

