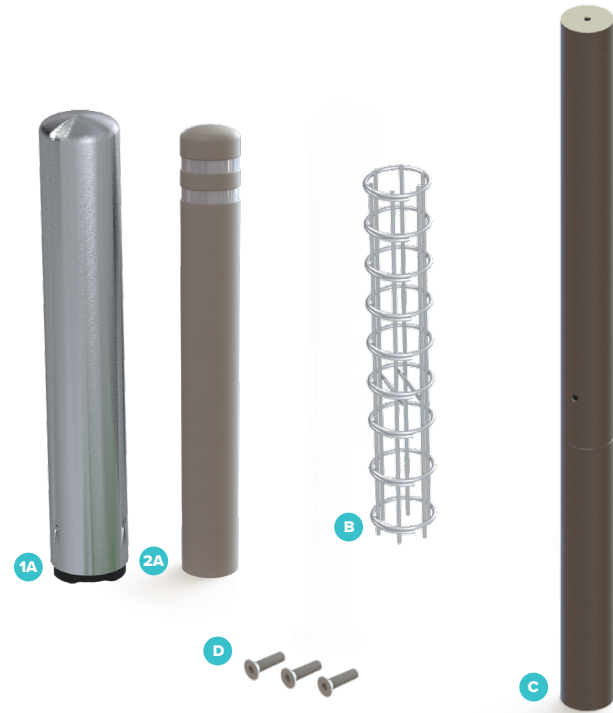


CrashCore™ Bollard

Crash-Rated S15 Asphalt Bollard Installation Instructions



COMPONENTS



INCLUDED COMPONENTS

- | | |
|-----------|---|
| 1A | Stainless Steel Post Cover |
| 2A | Plastic Post Cover |
| B | Rebar Cage |
| C | Steel Core |
| D | Flat Head Screw, 1/2" -13 Thread, 2" long |

All purchases subject to McCue Limited Warranty & Purchase Terms,
available at www.mccue.com/support/warranty



McCue Corporation
Peabody, Massachusetts, USA
+1 (800) 800 8503
customer@mc cue.com

McCue UK & Europe
Milton Keynes, United Kingdom
+44 (0)1908 365 511
uksales@mc cue.com

McCue Asia
迈客(厦门)有限公司
Xiamen, Fujian, China
+86-592-2200790

mccue.com



Suggested Tool List

Below you will find the suggested tools for a deep cage CrashCore Bollard installation

EQUIPMENT

- Skid Steer with 12" Auger & Bucket Attachments
- Core Drill with 12" Diamond Core Bit
- Small Concrete Mixer or 5 Gallon bucket with Concrete Paddle Mixer
- Gas-Powered Generator
- Wet/Dry Vacuum
- Pressure Washer
- Portable Work Lights (If Night Work)
- Cordless Blower
- Pallet Jack with 5000 lb Capacity
- Cordless Impact Driver
- Dumpster

HARDWARE & SUPPLIES

- Fast-Setting Concrete Mix with Minimum 3000 psi — Approximately 2 ft³ Per Bollard
- 1/4" x 1-3/4" Tapcon Self-Threading Concrete Anchors
- 3/16" Carbide Tip Masonry Drill Bit
- 5/16" Hex Impact Socket
- 5/16" Allen Key or Hex Bit
- Towels or Rags for Cleaning Stainless Steel
- Stainless Steel-Safe Cleaner

TOOLS

- Chalk for Marking Concrete, Chalk Line
- Chalk Line or Laser
- Tape Measure
- 24" Push Broom
- 7" Corn Hand Broom
- Finishing Trowel
- Flat Transfer Shovel
- Round Point Shovel
- Level
- Extension Cord
- 48" Post Hole Digger
- Wheelbarrow
- Web Slings for Lifting at least 1000 lb Capacity
- Square with at least 2 ft Blade
- 3/4" Water Hose with Hose Head Nozzle
- Steel Drilling Hammer or Dead Blow Hammer
- Shut-Off Valve Wrench (Water Security Key)
- 2 Adjustable Pipe Wrenches
- Utility Knife
- String or Wire
- Digging Bar
- Camera or Smart Phone

PPE

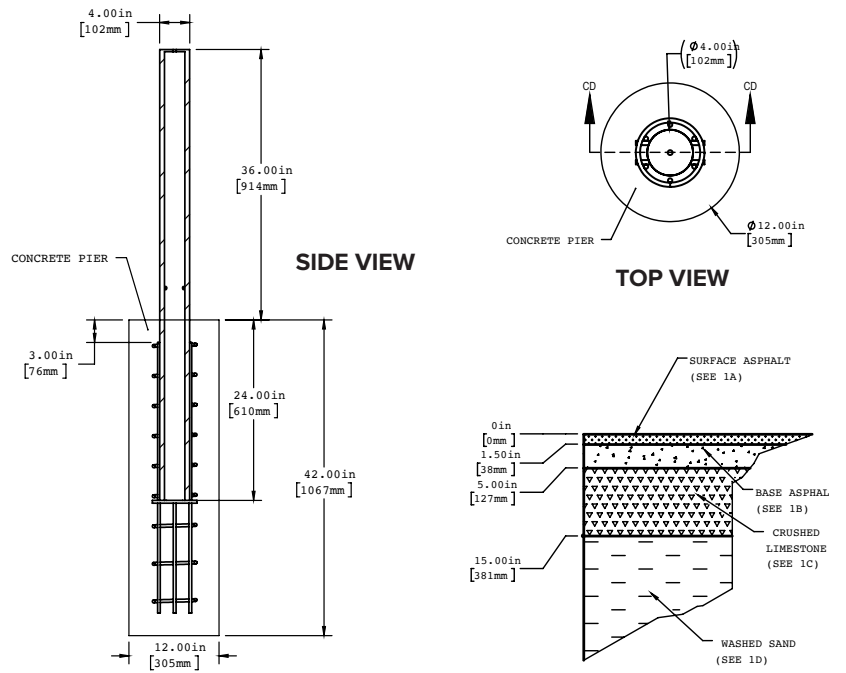
- Dust Mask
- Eye Protection
- Steel Toe Boots
- Ear Protection
- Gloves

OH SH!T LIST

- Cones
- Caution Tape
- Metal Barricade
- Steel Tamper
- Jack Hammer
- 1/2" - 13 Tap
- 3/8" or #3 x 36" Rod or Rebar
- Masking Tape
- Tarp

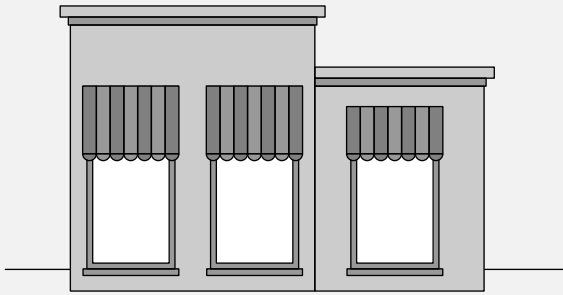
GROUND CONDITIONS PER ASTM F3016

- **1a:** The surface asphalt is TxDOT type D surface asphalt.
- **1b:** The asphalt base is TxDOT type B base asphalt.
- **1c:** The base is Type A Grade 1 Crushed limestone road base, compacted to 90% of standard proctor density.
- **1d:** The washed sand shall be classified as SP - poorly graded sand & be compacted to a density of not less than 90% maximum dry density in accordance with AASHTO Method of Test T099.



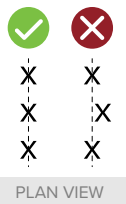
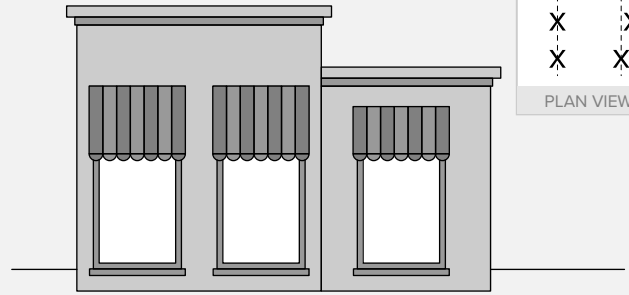
1

PHOTOGRAPH: Take wide angle photo including entire site.



2

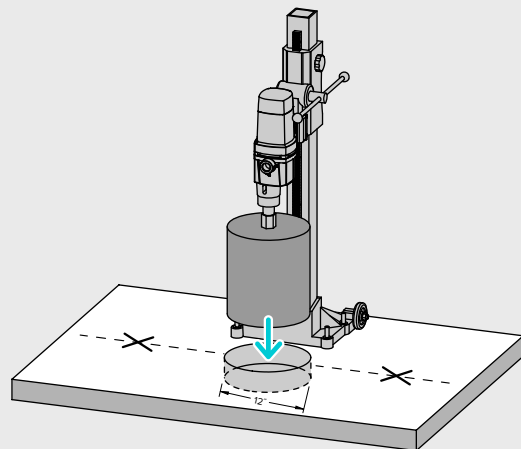
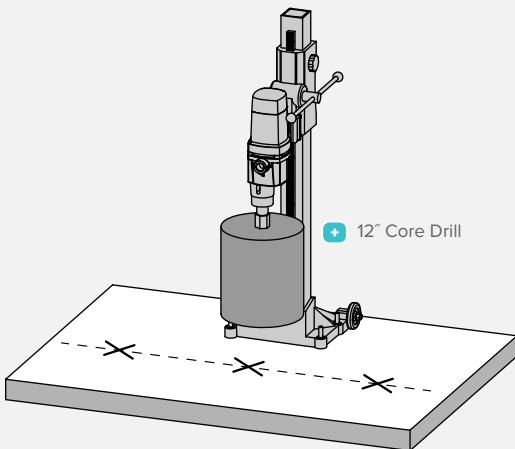
Layout and mark bollard locations per print.



+ Chalk, Tape & T-Square

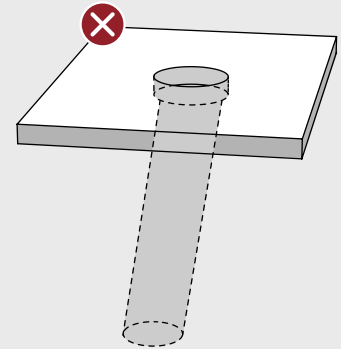
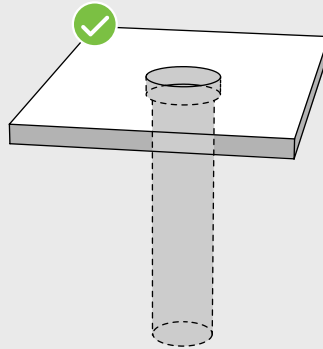
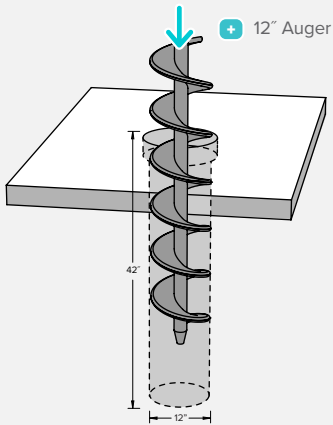
3

Use the 12" core drill to drill through concrete. Keep it clean — use the wet vac to make sure concrete slurry doesn't stain the sidewalk or enter drains.



4

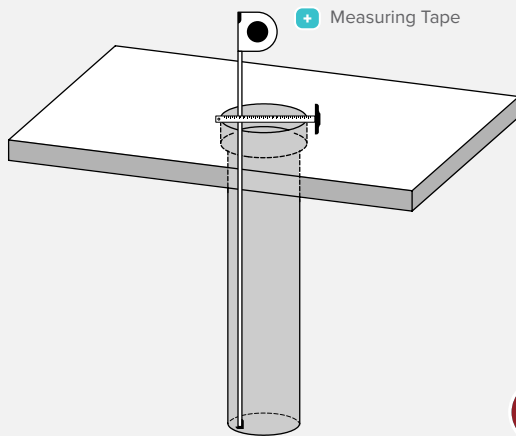
Using the 12" auger remove earth from hole. Auger 12" diameter hole 42" deep.



NOTE: Ensure hole is drilled straight and not at an angle

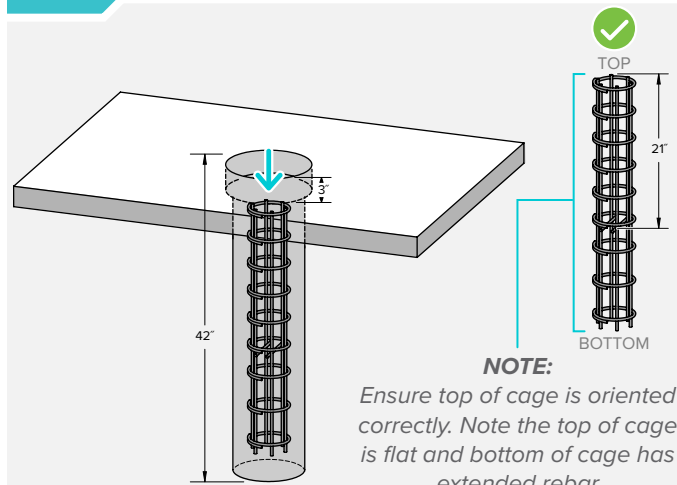
5

PHOTOGRAPH: Take two individual photos of both the diameter and depth of hole.



6

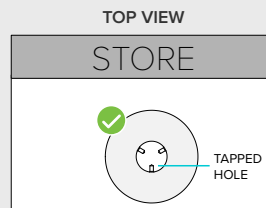
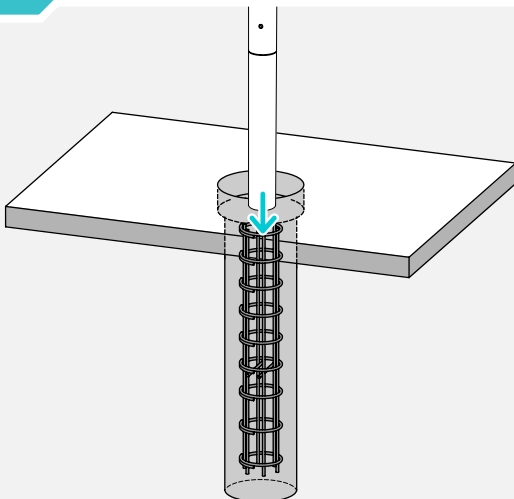
Install rebar cage 3" from ground level.



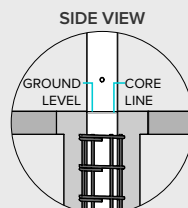
NOTE: Ensure top of cage is oriented correctly. Note the top of cage is flat and bottom of cage has extended rebar

7

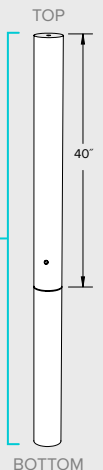
Lower the 215 lb core into the cage. Ensure one tapped hole is facing the parking lot and core is plumb.



PARKING LOT

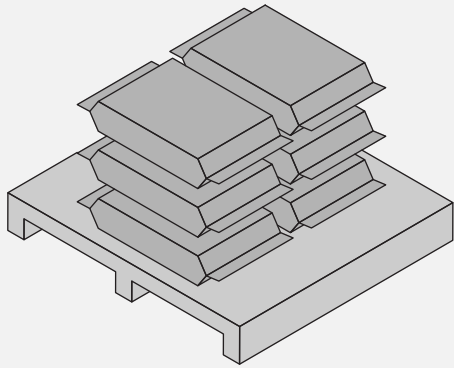


NOTE: Ensure top of core is oriented correctly. Note the tapped hole should be above the grooved core line.



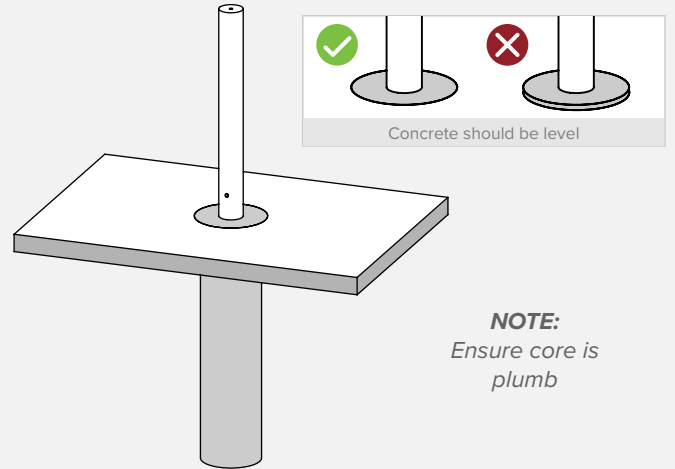
8

PHOTOGRAPH: Take photo of concrete bag.



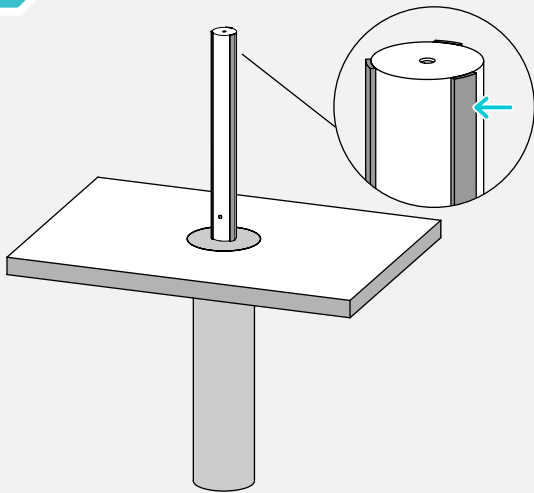
9

Mix & place 3,000 PSI minimum concrete into the hole to ground level — estimated concrete approximately 2 cubic feet per bollard.



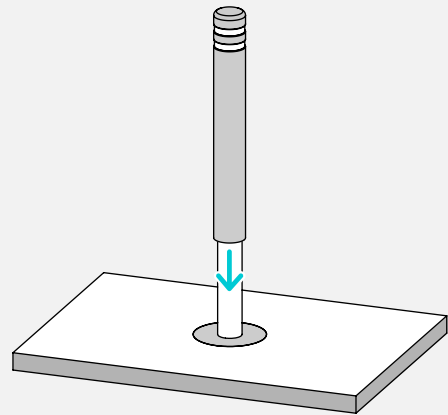
10A

IF PLASTIC COVER: Cut a 3' piece of foam tape and apply to the area between the threaded holes.



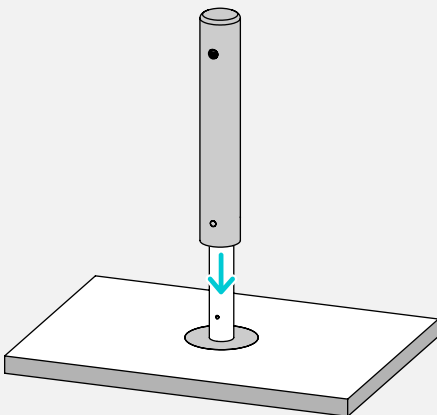
11A

While concrete is still curing, install the plastic post cover.



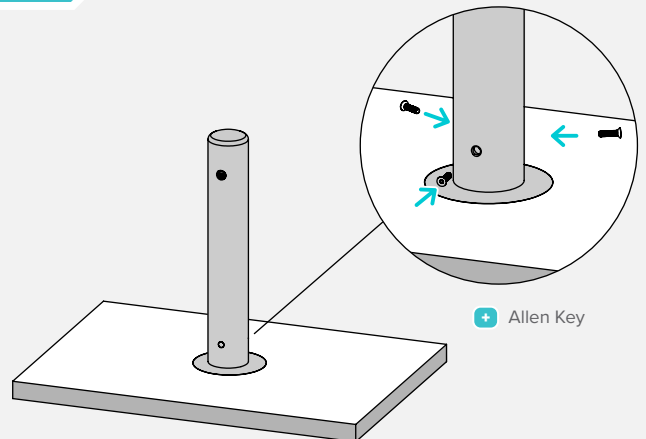
10B

IF STAINLESS STEEL COVER: While concrete is still curing, install the stainless steel post cover.



11B

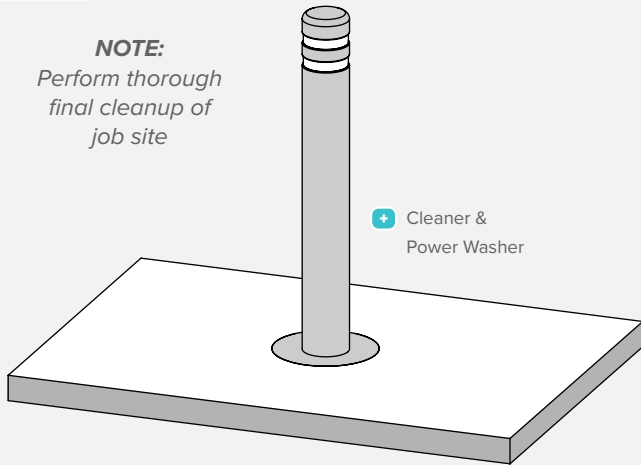
Use the 5/16" Allen Key to tighten the screws to secure the cover.



12

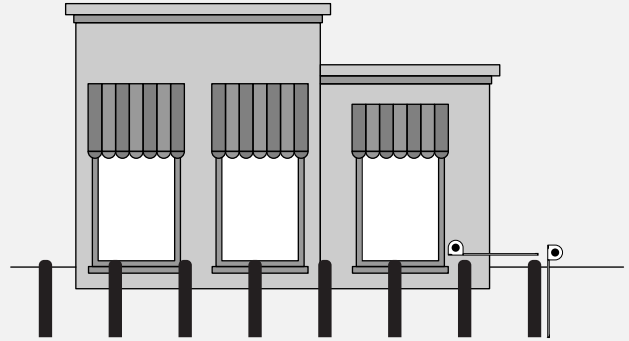
Clean bollard cover and ensure entire site is clean.

NOTE:
Perform thorough final cleanup of job site



13

PHOTOGRAPH: Take photos of completed installation, bollard height & typical spacing.



NOTE: Total of 3 photos



Installation Checklist

Ensure all items are complete before finishing installation

MEASUREMENT CHECK

- 42" Deep hole
- 12" Diameter hole
- Cage is 3" from ground level

CORE ALIGNMENT

- Center the core in the hole
- Core is plumb
- Check the overall height of the bollard from ground level using a tape measure and the line on the core

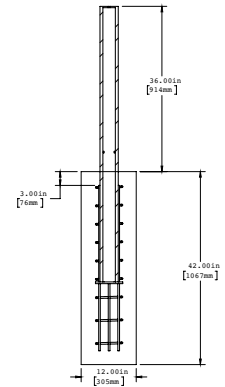
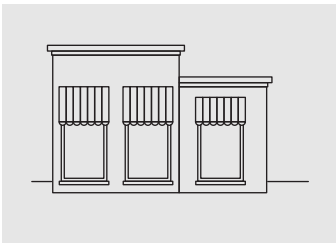
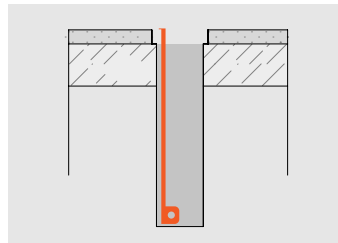


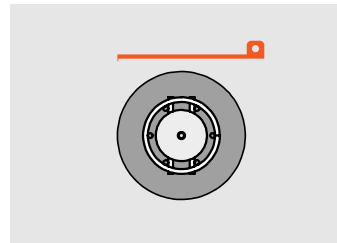
PHOTO CHECK: Ensure to document the completion of each specified step that included a photo icon as shown below



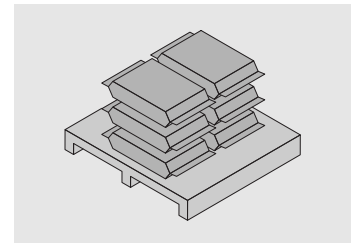
Before Photo Of Work Site



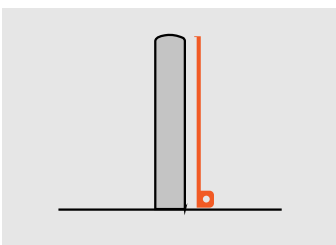
42" Deep Hole



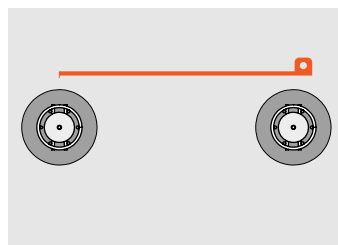
12" Diameter Hole



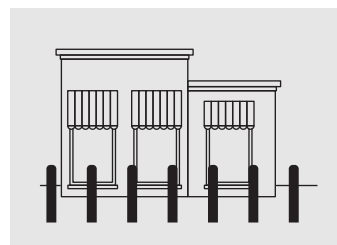
Concrete Bag



Overall Bollard Height



Typical Bollard Spacing



Finished Site Installation



McCue Corporation
Peabody, Massachusetts, USA
+1 (800) 800 8503
customer@McCue.com

McCue UK & Europe
Milton Keynes, United Kingdom
+44 (0)1908 365 511
uksales@McCue.com

McCue Asia
迈客(厦门)有限公司
Xiamen, Fujian, China
+86-592-2200790

mccue.com

