

# CrashCore™ Bollard

McCue's Crash-Tested ASTM F3016 Bollard



*\*Patent Pending*





# Protect your customers!



**20,000:** Number of times a year vehicles crash into buildings



**4,000:** Number of people injured annually in these crashes



**500:** Number of people killed each year as a result

*But it doesn't have to be that way!*

*\*Storefront Safety Council*

## Pipes in the ground? They don't work.



**Concrete Damage:** When impacted, unrated bollards can pull out of the ground.

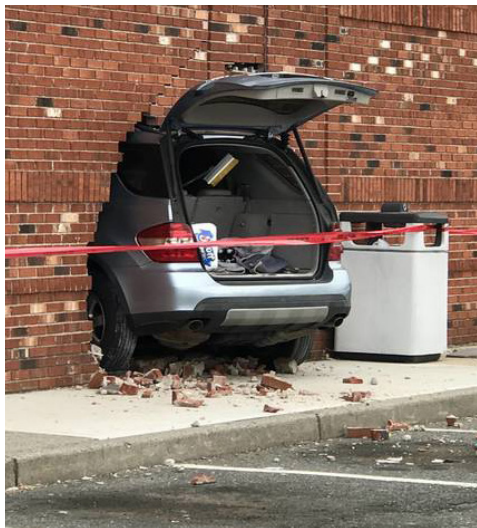
OR



**Sheared Off:** Bollards filled with concrete can snap right at the base.

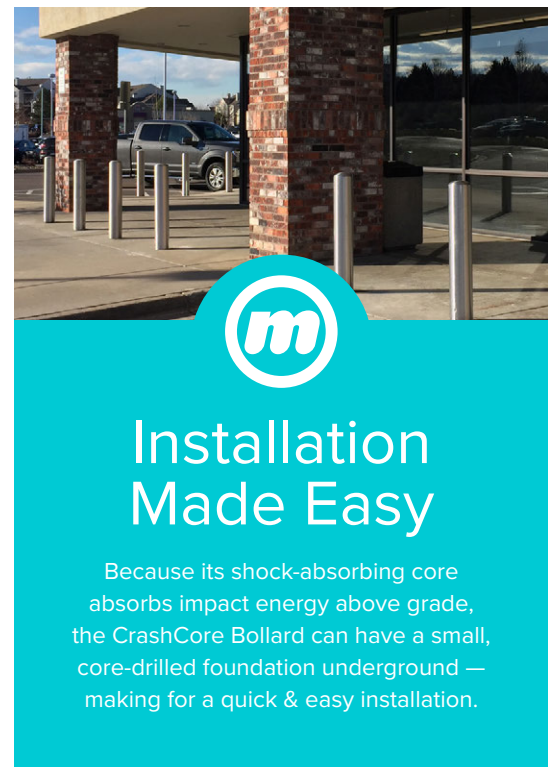
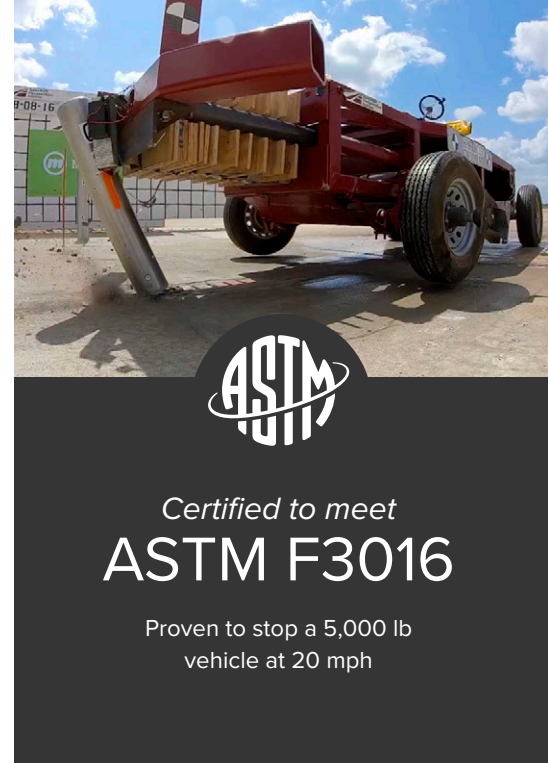
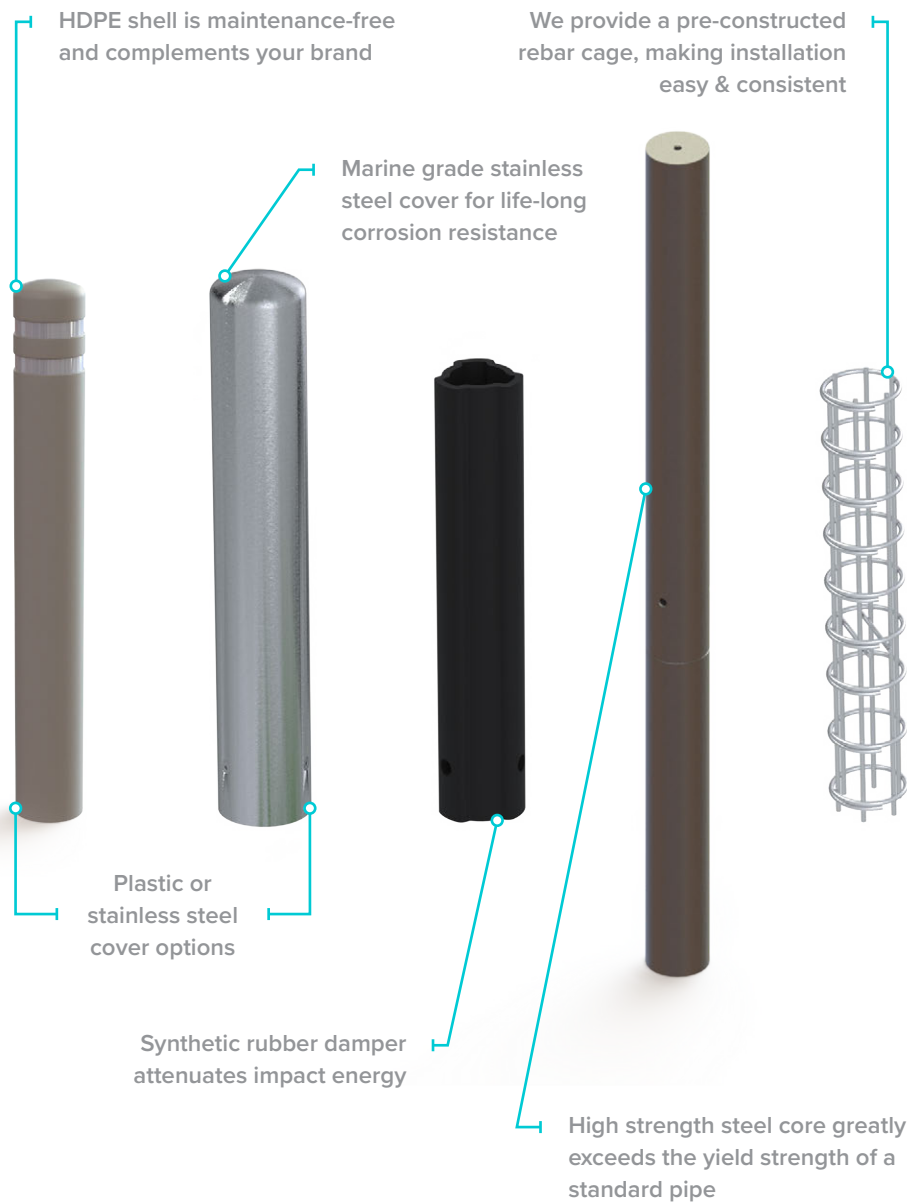


**Safety Tip:** Did you know, filling pipes with concrete may make them more dangerous? By increasing the stiffness, the bollard is more likely to shear or pull up from the ground.





# Engineered for strength. Designed to save lives.

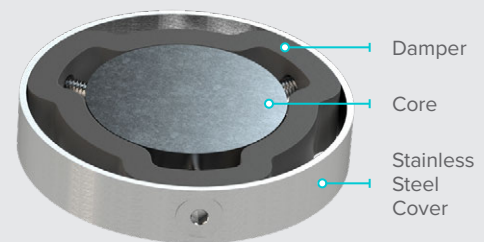


## Technology, At Its Core



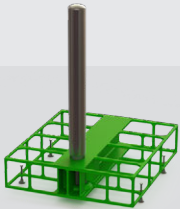
**Old Concrete Filled Bollard**

If you had to halt a vehicle traveling at 20mph, what kind of material would you trust to get the job done? Combining EDPM, stainless steel and a high-strength steel core, McCue's crash-tested CrashCore Bollard is guaranteed to work. Can you say that about your concrete-filled pipe?



**New CrashCore Bollard**

.....



Our shallow cage option is only 12" below grade.

www.mccue.com

